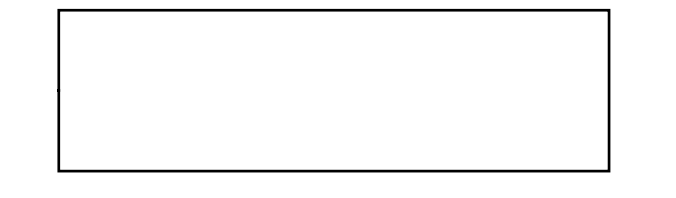


**PURPOSE AND CONTENTS OF THIS MAP**

The designations shown on this motor vehicle use map (MVUM) were made by the responsible official pursuant to 36 CFR 212.51, are effective as of the date on the front cover of this MVUM, and will remain in effect until superseded by next year's MVUM.



It is the responsibility of the user to acquire the current MVUM. This MVUM shows the National Forest System roads, National Forest System trails, and the areas on National Forest System lands in the Cedar City Ranger District that are designated for motor vehicle use pursuant to 36 CFR 212.51. This MVUM also identifies the vehicle classes allowed on each route and in each area, and any seasonal restrictions that apply on those routes and in those areas.

Designation of a road, trail, or area for motor vehicle use by a particular class of vehicle under 36 CFR 212.51 should not be interpreted as encouraging or inviting use or implying that the road, trail, or area is passable, actively maintained, or safe for travel. Motor vehicle designations include parking along designated routes and at facilities associated with designated routes when it is safe to do so and when not causing damage to National Forest System resources. Seasonal weather conditions and natural events may render designated roads and trails impassable for extended periods. Designated areas may contain dangerous or impassable terrain. Many designated roads and trails may be passable only by high-clearance vehicles or four-wheel-drive vehicles. Maintenance of designated roads and trails will depend on available resources, and many may receive little maintenance.

This motor vehicle use map identifies those roads, trails, and areas designated for the motor vehicle use under 36 CFR 212.51 for the purpose of enforcing the prohibition at 36 CFR 261.13. This is a limited purpose. The other public roads are shown for information and navigation purposes only and are not subject to designation under the Forest Service travel management regulation.

These designations apply only to National Forest System roads, National Forest System trails, and areas on National Forest System lands.

**PROHIBITIONS**

It is prohibited to possess or operate a motor vehicle on National Forest System lands on the Dixie National Forest other than in accordance with these designations (36 CFR 261.13).

Violators of 36 CFR 261.13 are subject to a fine of up to \$5,000, imprisonment for up to 6 months, or both (18 U.S.C. 3571(a)). This prohibition applies regardless of the presence or absence of signs.

This map does not display nonmotorized uses, over-snow uses, or other facilities and attractions on the Dixie National Forest. Obtain forest visitor information from the local national forest office.

Designated roads, trails and areas may also be subject to temporary, emergency closures. As a visitor, you must comply with signs notifying you of such restrictions. A national forest may issue an order to close a road, trail or area on a temporary basis to protect the life, health, or safety of forest visitors or the natural or cultural resources in these areas. Such a temporary and/or emergency closure is consistent with the Travel Management Rule (36 CFR 212.52 (b), 36 CFR 261 subpart B).

The designation "road or trail open to all motor vehicles" does not supersede State traffic law.

**OPERATOR RESPONSIBILITIES**

Operating a motor vehicle on National Forest System roads, National Forest System trails, and in areas on National Forest System lands carries a greater responsibility than operating that vehicle in a city or other developed setting. Not only must you follow all applicable traffic laws, you need to show concern for the environment as well as other forest users. The misuse of motor vehicles can lead to the temporary or permanent closure of any designated road, trail, or area. As a motor vehicle operator, you are also subject to State traffic law, including State requirements for licensing, registration, and operation of the vehicle in question.

Motor vehicle use, especially off-highway vehicle use, involves inherent risks that may cause property damage, serious injury, and possibly death to participants. Drive cautiously and anticipate rough surfaces and features such as snow, mud, vegetation, and water crossings common to remote driving conditions. By your participation, you voluntarily assume full responsibility for these damages, risks, and dangers. Take care at all times to protect yourself and those under your responsibility.

Much of the Cedar City Ranger District is remote. Medical assistance may not be readily available. Cellular telephones do not work in many areas of the Cedar City Ranger District. Take adequate food, water, first-aid supplies, and other equipment appropriate for the conditions and expected weather.

ALWAYS REMEMBER TO RESPECT PRIVATE LAND! PROTECT YOUR PRIVILEGE. STAY ON DESIGNATED ROADS AND TRAILS AND IN DESIGNATED AREAS.

Read and understand this map in its entirety. If you have questions, please contact the Dixie National Forest for clarification.

As a motor vehicle operator on a National Forest System road, trail, or area, you must comply with this map, as well as all Federal, State, and local laws and regulations. Compliance with these rules is your responsibility.

**Legend**

- Roads Open to Highway Legal Vehicles
- Roads Open to All Vehicles
- Trails Open to Vehicles 50" or Less in Width
- Special Vehicle Designation (See Blanket Statement)
- Seasonal Designation
- Highways, U.S. State
- Other Public Roads
- Short Route Identifier
- FS Campground
- Picnic Area
- Information Site
- Peaks
- Forest or Unit Boundary
- National Forest System Lands
- Non-National Forest System Lands within the National Forest
- Political Boundary
- Lakes and Rivers

0 0.5 1 2 Miles

**EXPLANATION OF LEGEND ITEMS**

**Roads Open to Highway Legal Vehicles Only:**  
These roads are open only to motor vehicles licensed under State law for general operation on all public roads within the state.

**Roads Open to All Vehicles:**  
These roads are open to all motor vehicles, including smaller off-highway vehicles that may not be licensed for highway use (but not to oversize or overweight vehicles under State traffic law).

**Trails Open to Vehicles 50 inches or Less in Width:**  
Trails open only to motor vehicles less than 50 inches in width at the widest point on the vehicle.

**Special Vehicle Designation:**  
This symbol indicates the road or trail is open to classes of vehicles other than those listed above. Refer to the Seasonal and Special Designation blanket statement below.

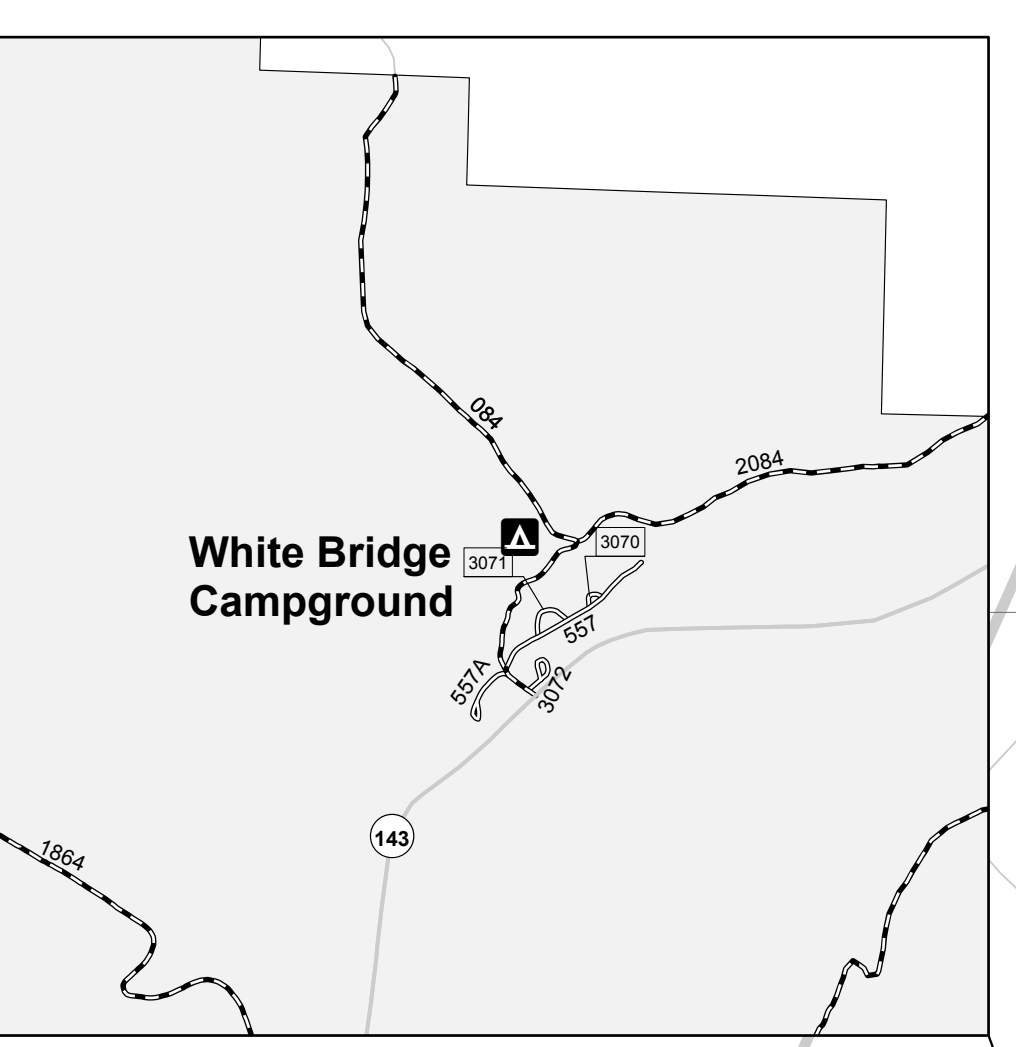
**Other Public Roads and Trails:**  
Interstate  
Highways, U.S. State  
Other Public Roads

These symbols are used to show routes the Forest Service does not have jurisdiction over and has not designated for motorized use. These symbols are part of the reference layer showing connections to towns and cities outside the forest boundary.

**Short Route Identifier:**  
This symbol is used for roads that are too short to show a symbol type on the map. The symbol contains the number of the road or trail. Users should refer to the corresponding number in the Short Route Table for designation information.

**Seasonal Designation:**  
This symbol, used in conjunction with one of the other road or trail symbols, indicates that the road or trail is open only during certain portions of the year. Refer to Seasonal and Special Designation blanket statement below.

Route Number	Legend	Vehicle Designation	Length Feet
042A	—————	Roads Open to Highway Legal Vehicles Only	600
045	—————	Roads Open to Highway Legal Vehicles Only	1001
079A	—————	Roads Open to All Vehicles	750
406	—————	Roads Open to All Vehicles	989
557A	—————	Roads Open to Highway Legal Vehicles Only	524
562	—————	Roads Open to All Vehicles	894
965	—————	Roads Open to All Vehicles	694
1322	—————	Roads Open to All Vehicles	904
1576	—————	Roads Open to All Vehicles	560
2058	—————	Roads Open to All Vehicles-Yearlong	211
2074	—————	Roads Open to All Vehicles	870
2116	—————	Roads Open to All Vehicles-Yearlong	526
2123	—————	Roads Open to All Vehicles	649
2377A	—————	Roads Open to All Vehicles-Yearlong	632
3020	—————	Roads Open to All Vehicles	645
3021	—————	Roads Open to Highway Legal Vehicles Only	139
3023A	—————	Roads Open to All Vehicles	422
3024	—————	Roads Open to All Vehicles	992
3026	—————	Roads Open to All Vehicles	1003
3040	—————	Roads Open to All Vehicles	435
3041	—————	Roads Open to All Vehicles	307
3042	—————	Roads Open to All Vehicles	714
3043	—————	Roads Open to All Vehicles	972
3044	—————	Roads Open to All Vehicles	106
3057	—————	Roads Open to All Vehicles	463
3067	—————	Roads Open to All Vehicles	550
3070	—————	Roads Open to Highway Legal Vehicles Only	167
3071	—————	Roads Open to Highway Legal Vehicles Only	350
3072	—————	Roads Open to Highway Legal Vehicles Only	407
3073	—————	Roads Open to Highway Legal Vehicles Only	405
3073A	—————	Roads Open to Highway Legal Vehicles Only	889
3074	—————	Roads Open to All Vehicles	501
3077	—————	Roads Open to All Vehicles	563
3084	—————	Roads Open to All Vehicles	773
3085	—————	Roads Open to All Vehicles	328
3095	—————	Roads Open to All Vehicles	371
3104	—————	Roads Open to All Vehicles	119
3112	—————	Roads Open to All Vehicles	699
3184	—————	Roads Open to All Vehicles	916
3185	—————	Roads Open to All Vehicles	884
3467	—————	Roads Open to All Vehicles	1009
3467A	—————	Roads Open to All Vehicles	910
3469	—————	Roads Open to All Vehicles	887
3471	—————	Roads Open to Highway Legal Vehicles Only	937
3473	—————	Roads Open to All Vehicles	312
3511	—————	Roads Open to All Vehicles	398
3513	—————	Roads Open to All Vehicles	865
3514	—————	Roads Open to All Vehicles	528
3517	—————	Roads Open to All Vehicles	217
3518	—————	Roads Open to All Vehicles	421
3519	—————	Roads Open to All Vehicles	446
3595	—————	Roads Open to All Vehicles	342
4066	—————	Roads Open to All Vehicles	530
4757	—————	Roads Open to All Vehicles	348



**INFORMATION SOURCES**

Please contact the Supervisor's Office at 1789 North Wedgewood Lane, Cedar City, Utah 84721. Telephone number is (435) 865-3700. Information is also available at the five District Ranger Headquarters.

**Pine Valley Ranger District**  
196 East Tabernacle RM 38  
St. George, Utah 84770  
(435) 652-3100

**St. George Interagency Recreation Information**  
345 East Riverside  
St. George, Utah 84790  
(435) 868-3246

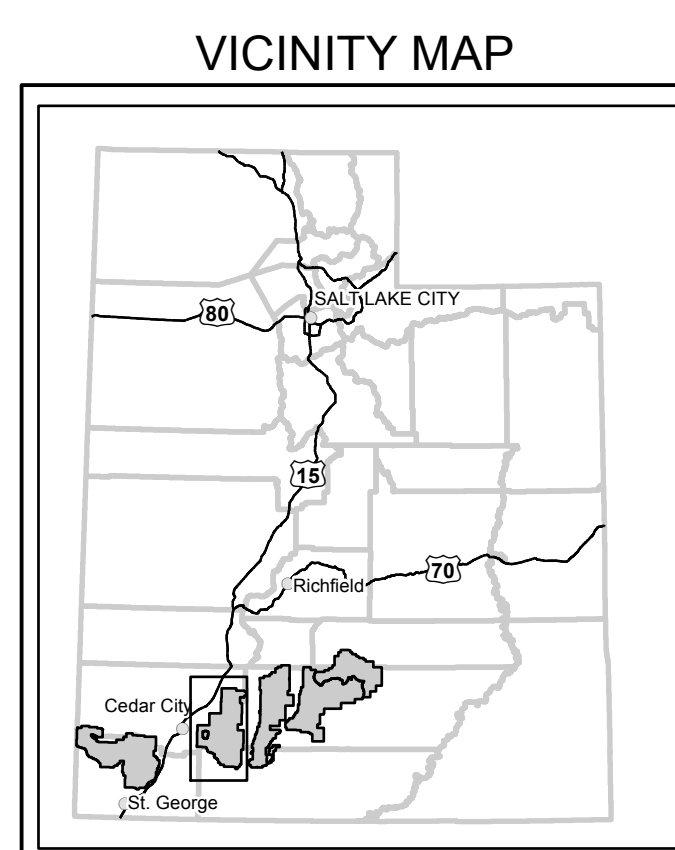
**Cedar City Ranger District**  
1789 North Wedgewood Lane  
Cedar City, Utah 84721  
(435) 865-3200

**Powell Ranger District**  
225 East Center Street  
P.O. Box 80  
Panguitch, Utah 84759  
(435) 676-3030

**Escalante Ranger District**  
Escalante Interagency Federal Building  
755 West Main Street  
Escalante, Utah 84726  
(435) 826-5400  
Visitor Center (435) 826-5499

**Fremont River Ranger District**  
138 South Main  
P.O. Box 129  
Loa, Utah 84747  
(435) 836-2800

[www.fs.usda.gov/dixie](http://www.fs.usda.gov/dixie)

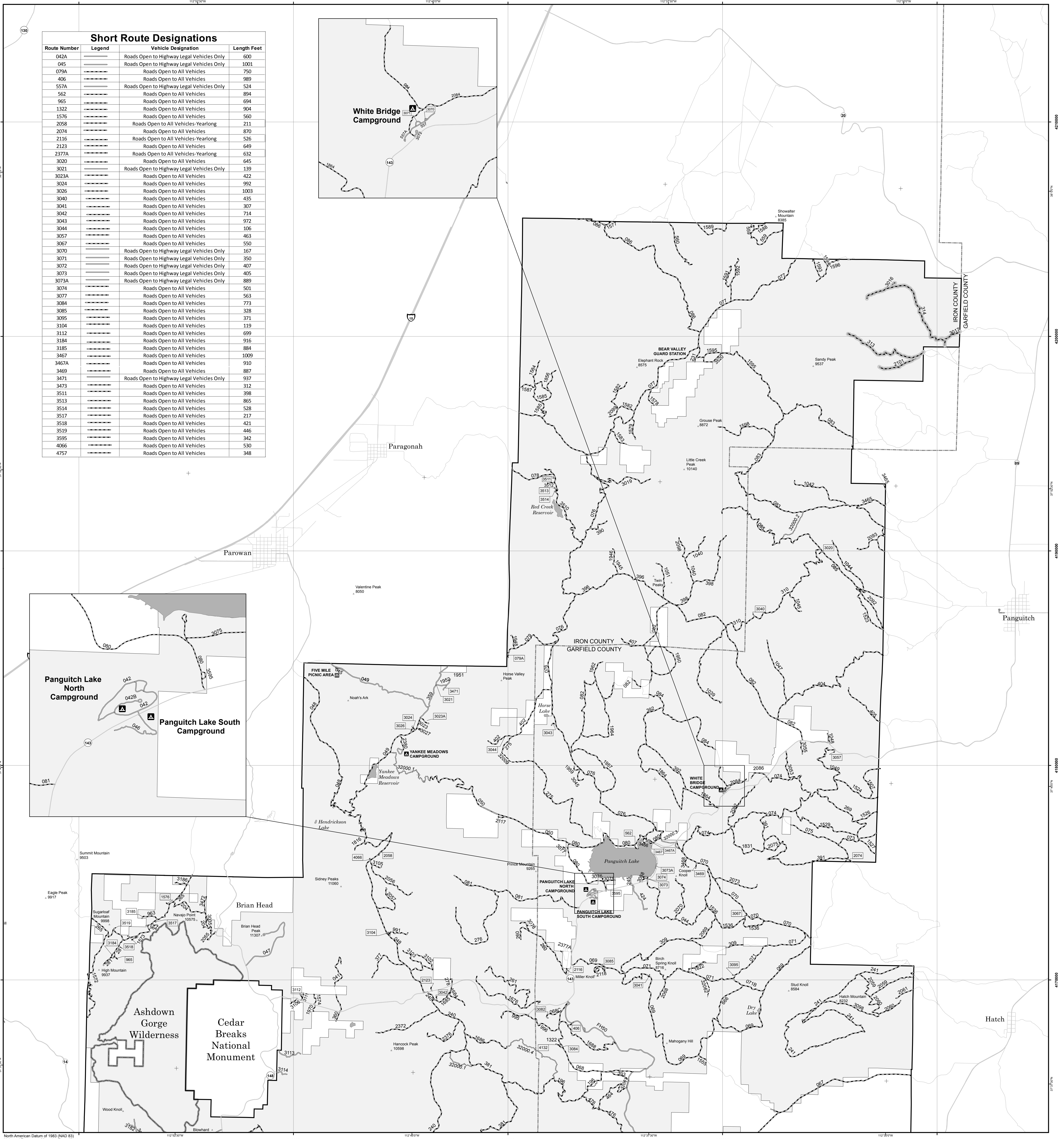


The U.S. Department of Agriculture (USDA) prohibits discrimination in all its programs and activities on the basis of race, color, national origin, age, disability, and where applicable, sex, marital status, familial status, parental status, religion, sexual orientation, genetic information, political beliefs, reprisal, or because all or part of an individual's income is derived from any public assistance program. (Not all prohibited bases apply to all programs.) Persons with disabilities who require alternative means for communication of program information (Braille, large print, audiotape, etc.) should contact USDA's TARGET Center at (202) 720-2600 (voice and TDD). To file a complaint of discrimination, write to USDA, Director, Office of Civil Rights, 1400 Independence Avenue, S.W., Washington, D.C. 20250-9410, or call (800) 795-3272 (voice) or (202) 720-6382 (TDD). USDA is an equal opportunity provider and employer.

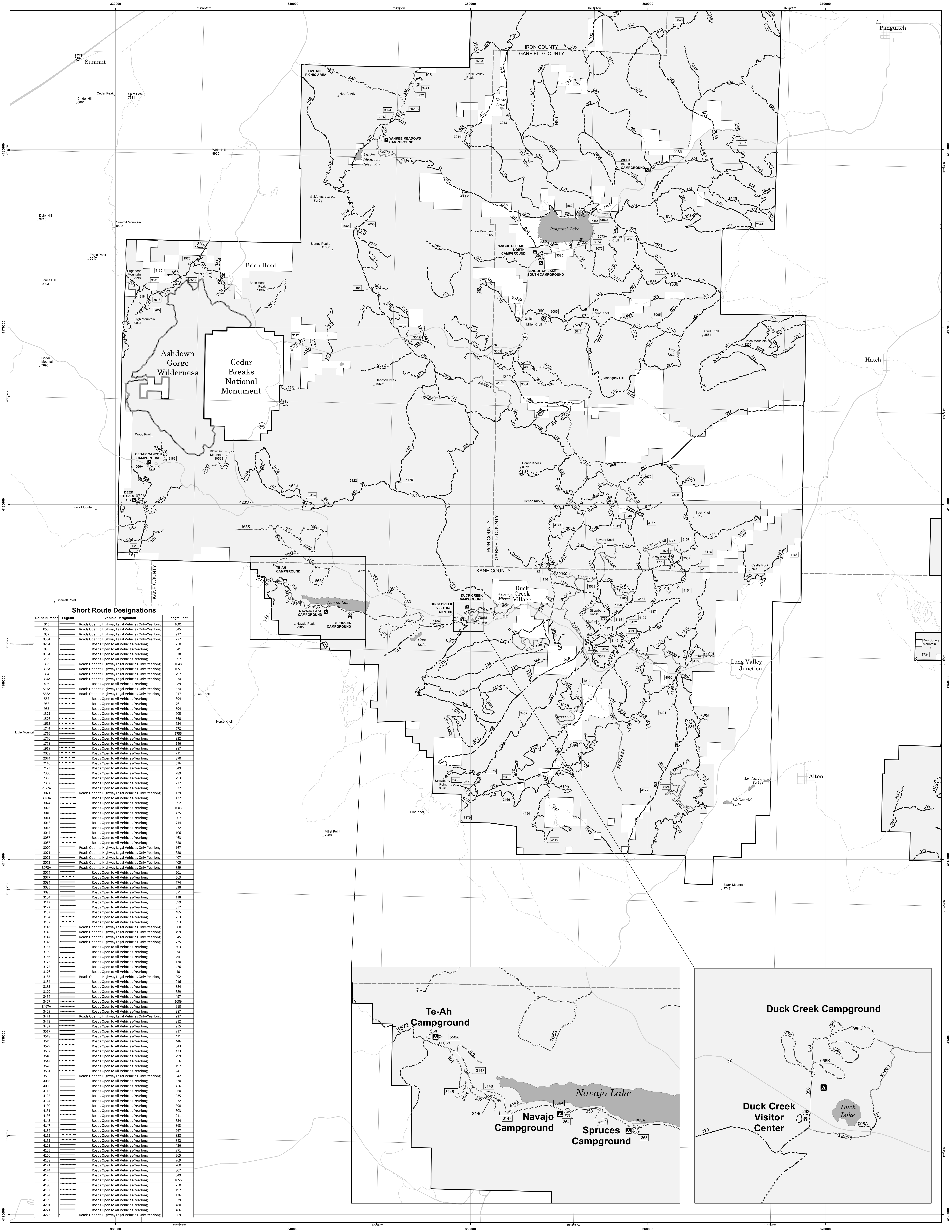
**Seasonal Designation:**  
All routes with a seasonal designation are open from May 1st through November 30th.

**Special Designation:**  
All trails with a special designation are open to vehicles 62" or less in width

**Dispersed Camping:**  
Motor Vehicle use off of designated roads and/or trails for the purpose of dispersed camping is permitted for up to 150 feet from the centerline of all roads and/or trails from the period of 01/01 to 12/31.







### Short Route Designations

Route Number	Legend	Vehicle Designation	Length Feet
045	-----	Roads Open to Highway Legal Vehicles Only-Yearlong	1003
056E	-----	Roads Open to Highway Legal Vehicles Only-Yearlong	645
057	-----	Roads Open to Highway Legal Vehicles Only-Yearlong	922
066A	-----	Roads Open to Highway Legal Vehicles Only-Yearlong	772
079A	-----	Roads Open to All Vehicles-Yearlong	750
095	-----	Roads Open to All Vehicles-Yearlong	641
095A	-----	Roads Open to All Vehicles-Yearlong	378
263	-----	Roads Open to All Vehicles-Yearlong	697
363	-----	Roads Open to Highway Legal Vehicles Only-Yearlong	1048
363A	-----	Roads Open to Highway Legal Vehicles Only-Yearlong	1051
364	-----	Roads Open to Highway Legal Vehicles Only-Yearlong	797
364A	-----	Roads Open to Highway Legal Vehicles Only-Yearlong	874
406	-----	Roads Open to All Vehicles-Yearlong	989
557A	-----	Roads Open to Highway Legal Vehicles Only-Yearlong	524
558A	-----	Roads Open to Highway Legal Vehicles Only-Yearlong	937
562	-----	Roads Open to All Vehicles-Yearlong	894
562	-----	Roads Open to All Vehicles-Yearlong	763
565	-----	Roads Open to All Vehicles-Yearlong	694
1332	-----	Roads Open to All Vehicles-Yearlong	905
1576	-----	Roads Open to All Vehicles-Yearlong	560
1613	-----	Roads Open to All Vehicles-Yearlong	634
1746	-----	Roads Open to All Vehicles-Yearlong	778
1756	-----	Roads Open to All Vehicles-Yearlong	1756
1776	-----	Roads Open to All Vehicles-Yearlong	932
1778	-----	Roads Open to All Vehicles-Yearlong	146
1919	-----	Roads Open to All Vehicles-Yearlong	967
2058	-----	Roads Open to All Vehicles-Yearlong	211
2074	-----	Roads Open to All Vehicles-Yearlong	870
2116	-----	Roads Open to All Vehicles-Yearlong	526
2123	-----	Roads Open to All Vehicles-Yearlong	649
2330	-----	Roads Open to All Vehicles-Yearlong	789
2336	-----	Roads Open to All Vehicles-Yearlong	299
2337	-----	Roads Open to All Vehicles-Yearlong	277
2377A	-----	Roads Open to All Vehicles-Yearlong	632
3023	-----	Roads Open to Highway Legal Vehicles Only-Yearlong	239
3023A	-----	Roads Open to All Vehicles-Yearlong	422
3034	-----	Roads Open to All Vehicles-Yearlong	992
3036	-----	Roads Open to All Vehicles-Yearlong	1003
3040	-----	Roads Open to All Vehicles-Yearlong	415
3041	-----	Roads Open to All Vehicles-Yearlong	307
3042	-----	Roads Open to All Vehicles-Yearlong	714
3043	-----	Roads Open to All Vehicles-Yearlong	673
3044	-----	Roads Open to All Vehicles-Yearlong	106
3057	-----	Roads Open to All Vehicles-Yearlong	463
3067	-----	Roads Open to All Vehicles-Yearlong	550
3070	-----	Roads Open to Highway Legal Vehicles Only-Yearlong	167
3071	-----	Roads Open to Highway Legal Vehicles Only-Yearlong	350
3072	-----	Roads Open to Highway Legal Vehicles Only-Yearlong	407
3073	-----	Roads Open to Highway Legal Vehicles Only-Yearlong	405
3073A	-----	Roads Open to Highway Legal Vehicles Only-Yearlong	889
3074	-----	Roads Open to All Vehicles-Yearlong	501
3077	-----	Roads Open to All Vehicles-Yearlong	563
3084	-----	Roads Open to All Vehicles-Yearlong	774
3085	-----	Roads Open to All Vehicles-Yearlong	328
3095	-----	Roads Open to All Vehicles-Yearlong	371
3104	-----	Roads Open to All Vehicles-Yearlong	318
3112	-----	Roads Open to All Vehicles-Yearlong	699
3122	-----	Roads Open to All Vehicles-Yearlong	352
3132	-----	Roads Open to All Vehicles-Yearlong	485
3134	-----	Roads Open to All Vehicles-Yearlong	253
3137	-----	Roads Open to All Vehicles-Yearlong	393
3143	-----	Roads Open to Highway Legal Vehicles Only-Yearlong	500
3145	-----	Roads Open to Highway Legal Vehicles Only-Yearlong	499
3147	-----	Roads Open to Highway Legal Vehicles Only-Yearlong	645
3148	-----	Roads Open to Highway Legal Vehicles Only-Yearlong	735
3157	-----	Roads Open to All Vehicles-Yearlong	603
3159	-----	Roads Open to All Vehicles-Yearlong	74
3166	-----	Roads Open to All Vehicles-Yearlong	84
3172	-----	Roads Open to All Vehicles-Yearlong	170
3175	-----	Roads Open to All Vehicles-Yearlong	476
3176	-----	Roads Open to All Vehicles-Yearlong	40
3183	-----	Roads Open to Highway Legal Vehicles Only-Yearlong	292
3184	-----	Roads Open to All Vehicles-Yearlong	916
3185	-----	Roads Open to All Vehicles-Yearlong	884
3179	-----	Roads Open to All Vehicles-Yearlong	389
3454	-----	Roads Open to All Vehicles-Yearlong	497
3467	-----	Roads Open to All Vehicles-Yearlong	1009
3467A	-----	Roads Open to All Vehicles-Yearlong	910
3469	-----	Roads Open to All Vehicles-Yearlong	887
3471	-----	Roads Open to Highway Legal Vehicles Only-Yearlong	917
3473	-----	Roads Open to All Vehicles-Yearlong	312
3482	-----	Roads Open to All Vehicles-Yearlong	955
3517	-----	Roads Open to All Vehicles-Yearlong	317
3518	-----	Roads Open to All Vehicles-Yearlong	423
3519	-----	Roads Open to All Vehicles-Yearlong	446
3529	-----	Roads Open to All Vehicles-Yearlong	843
3537	-----	Roads Open to All Vehicles-Yearlong	423
3540	-----	Roads Open to All Vehicles-Yearlong	299
3542	-----	Roads Open to All Vehicles-Yearlong	356
3578	-----	Roads Open to All Vehicles-Yearlong	397
3581	-----	Roads Open to All Vehicles-Yearlong	241
3595	-----	Roads Open to Highway Legal Vehicles Only-Yearlong	342
4066	-----	Roads Open to All Vehicles-Yearlong	530
4096	-----	Roads Open to All Vehicles-Yearlong	456
4115	-----	Roads Open to All Vehicles-Yearlong	360
4122	-----	Roads Open to All Vehicles-Yearlong	335
4124	-----	Roads Open to All Vehicles-Yearlong	332
4130	-----	Roads Open to All Vehicles-Yearlong	398
4131	-----	Roads Open to All Vehicles-Yearlong	303
4136	-----	Roads Open to All Vehicles-Yearlong	211
4145	-----	Roads Open to All Vehicles-Yearlong	334
4147	-----	Roads Open to All Vehicles-Yearlong	363
4154	-----	Roads Open to All Vehicles-Yearlong	967
4155	-----	Roads Open to All Vehicles-Yearlong	328
4162	-----	Roads Open to All Vehicles-Yearlong	342
4163	-----	Roads Open to All Vehicles-Yearlong	436
4165	-----	Roads Open to All Vehicles-Yearlong	271
4166	-----	Roads Open to All Vehicles-Yearlong	265
4168	-----	Roads Open to All Vehicles-Yearlong	169
4171	-----	Roads Open to All Vehicles-Yearlong	300
4174	-----	Roads Open to All Vehicles-Yearlong	307
4175	-----	Roads Open to All Vehicles-Yearlong	649
4186	-----	Roads Open to All Vehicles-Yearlong	1056
4190	-----	Roads Open to All Vehicles-Yearlong	250
4192	-----	Roads Open to All Vehicles-Yearlong	197
4194	-----	Roads Open to All Vehicles-Yearlong	136
4199	-----	Roads Open to All Vehicles-Yearlong	339
4201	-----	Roads Open to All Vehicles-Yearlong	480
4221	-----	Roads Open to All Vehicles-Yearlong	486
4222	-----	Roads Open to Highway Legal Vehicles Only-Yearlong	869

