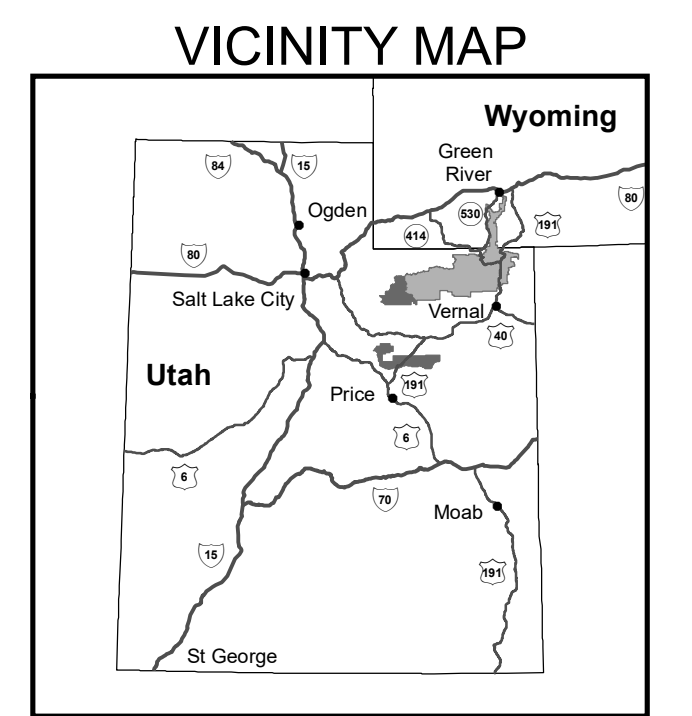


# Motor Vehicle Use Map

## Duchesne Ranger District, Ashley National Forest



### INFORMATION SOURCES

**Ashley National Forest**  
355 North Vernal Avenue  
Vernal, UT 84078  
(435) 789-1181  
www.fs.fed.us/r4/ashley

**Duchesne Ranger District**  
85 West Main  
Duchesne, UT 84021  
(435) 738-2482

**Emergency Services** 911  
Utah Highway Patrol (435) 789-4222  
Duchesne County Sheriff (435) 738-2424

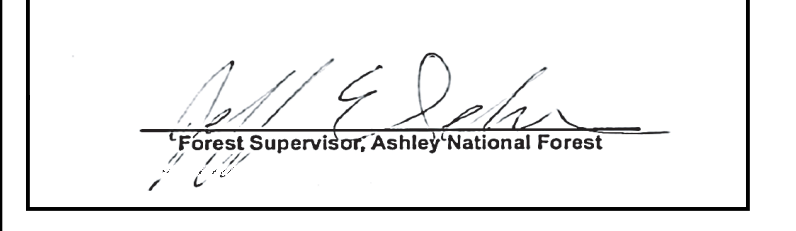
**Report a Fish or Game Violation:**  
1-877-662-3337



The U.S. Department of Agriculture (USDA) prohibits discrimination in all its programs and activities on the basis of race, color, national origin, age, disability, and where applicable, sex, marital status, familial status, parental status, religion, sexual orientation, genetic information, political beliefs, reprisal, or because all or part of an individual's income is derived from any public assistance program. (Not all prohibited bases apply to all programs.) Persons with disabilities who require alternative means for communication of program information (Braille, large print, audiotape, etc.) should contact USDA's TARGET Center at (202) 720-2600 (voice and TDD). To file a complaint of discrimination, write to USDA, Director, Office of Civil Rights, 1400 Independence Avenue, S.W., Washington, D.C. 20250-9410, or call (800) 795-3272 (voice) or (202) 720-6382 (TDD). USDA is an equal opportunity provider and employer.

## PURPOSE AND CONTENTS OF THIS MAP

The designations shown on this motor vehicle use map (MVUM) were made by the responsible official pursuant to 36 CFR 212.51, are effective as of the date on the front cover of this MVUM; and will remain in effect until superseded by the next year's MVUM.



It is the responsibility of the user to acquire the current MVUM. This MVUM shows the National Forest System roads, National Forest System trails, and the areas on National Forest System lands in the Ashley National Forest, Duchesne Ranger District that are designated for motor vehicle use pursuant to 36 CFR 212.51. This MVUM also identifies the vehicle classes allowed on each route and in each area and any seasonal restrictions that apply on those routes and in those areas.

Designation of a road, trail, or area for motor vehicle use by a particular class of vehicle under 36 CFR 212.51 should not be interpreted as encouraging or inviting use, or to imply that the road, trail, or area is passable, actively maintained, or safe for travel. Motor vehicle designations include parking along designated routes and at facilities associated with designated routes when it is safe to do so and when not causing damage to National Forest System resources. Seasonal weather conditions and natural events may render designated roads and trails impassable for extended periods. Designated areas may contain dangerous or impassable terrain. Many designated roads and trails may be passable only by high-clearance vehicles or four-wheel drive vehicles. Maintenance of designated roads and trails will depend on available resources, and many may receive little maintenance.

This motor vehicle use map identifies those roads, trails, and areas designated for the motor vehicle use under 36 CFR 212.51 for the purpose of enforcing the prohibition at 36 CFR 261.13. This is a limited purpose. The other public roads are shown for information and navigation purposes only and are not subject to designation under the Forest Service travel management regulation.

These designations apply only to National Forest System roads, National Forest System trails, and areas on National Forest System lands.

### PROHIBITIONS

It is prohibited to possess or operate a motor vehicle on National Forest System lands on the Ashley National Forest, Duchesne Ranger District other than in accordance with these designations (36 CFR 261.13).

Violators of 36 CFR 261.13 are subject to a fine of up to \$5,000 or imprisonment for up to 6 months or both (18 U.S.C. 3571(e)). This prohibition applies regardless of the presence or absence of signs.

This map does not display nonmotorized uses, over-snow vehicle uses, or other facilities and attractions on the Ashley National Forest, Duchesne Ranger District. Obtain forest visitor information from the local national forest office.

Designated roads, trails, and areas may also be subject to temporary, emergency closures. As a visitor, you must comply with signs notifying you of such restrictions. A national forest may issue an order to close a road, trail, or area on a temporary basis to protect the life, health or safety of forest visitors or the natural or cultural resources in these areas. Such a temporary and/or emergency closures are consistent with the Travel Management Rule (36 CFR 212.52 (b); 36 CFR 261 subpart B).

The designation "road or trail open to all motor vehicles" does not supersede State traffic law.

### OPERATOR RESPONSIBILITIES

Operating a motor vehicle on National Forest System roads, National Forest System trails, and in areas on National Forest System lands carries a greater responsibility than operating that vehicle in a city or other developed setting. Not only must you know and follow all applicable traffic laws, you need to show concern for the environment as well as other forest users. The misuse of motor vehicles can lead to the temporary or permanent closure of any designated road, trail, or area. As a motor vehicle operator, you are subject to State traffic law, including State requirements for licensing, registration, and operation of the vehicle in question.

Motor vehicle use, especially off-highway vehicle use, involves inherent risks that may cause property damage, serious injury, and possibly death to participants. Drive cautiously and anticipate rough surfaces and features, such as snow, mud, vegetation, and water crossings common to remote driving conditions. By your participation, you voluntarily assume full responsibility for these damages, risks, and dangers. Take care at all times to protect yourself and those under your responsibility.

Much of the Ashley National Forest, Duchesne Ranger District is remote, and medical assistance may not be readily available. Cellular telephones do not work in many areas of the Ashley National Forest, Duchesne Ranger District. Take adequate food, water, first aid supplies, and other equipment appropriate for the conditions and expected weather.

**ALWAYS REMEMBER TO RESPECT PRIVATE LAND! PROTECT YOUR PRIVILEGE. STAY ON DESIGNATED ROADS AND TRAILS AND IN DESIGNATED AREAS.**

Read and understand this map in its entirety. If you have questions please contact the Ashley National Forest, Duchesne Ranger District for clarification.

As a motor vehicle operator on a National Forest System road, trail, or area, you must comply with this map, as well as all Federal, State, and local laws and regulations.

### Legend

- Roads Open to Highway Legal Vehicles
- Roads Open to all Vehicles
- Trails Open to all Vehicles
- Trails Open to Vehicles 50" or Less in Width
- Special Designation (See Table)
- Seasonal Designation (See Table)
- Dispersed Camping, Both Sides (See Table)
- Highways, U.S. State, County
- Other Public Roads
- Short Route Identifier
- Milepost Marker
- FS Campgrounds
- Information Site
- Peaks
- Forest or Unit Boundary
- National Forest System Lands
- Non-National Forest System Lands within the National Forest
- Wilderness Areas
- Political Boundary
- Township and Range Lines
- Section Lines
- Lakes and Rivers

0 0.5 1 2 3 Miles

### EXPLANATION OF LEGEND ITEMS

**Roads Open to Highway Legal Vehicles Only:**  
These roads are open only to motor vehicles licensed under State law for general operation on all public roads within the State.

**Roads Open to All Vehicles:**  
These roads are open to all motor vehicles, including smaller off-highway vehicles that may not be licensed for highway use (but not to oversize or overweight vehicles under State traffic law).

**Trails Open to All Vehicles:**  
These trails are open to all motor vehicles, including both highway legal and nonhighway legal vehicles.

**Trails Open to Vehicles 50 Inches or Less in Width:**  
These trails are open only to motor vehicles less than 50 inches in width at the widest point on the vehicle.

**Special Vehicle Designation:**  
This symbol indicates the road or trail is open to classes of vehicles other than those listed above. Refer to the Seasonal and Special Designation Table for further instructions.

**Dispersed Camping:**  
Dispersed Camping, Both Sides

**Other Public Roads and Trails:**  
Interstate  
Highways, U.S. State  
Other Public Roads  
Other Public Trails

**Short Route Identifier:**  
This symbol is used for roads that are too short to show a symbol type on the map. The symbol contains the road or trail number. Users should refer to the corresponding number in the Short Route Table for more information on the designated route.

**Milepost Marker:**  
This symbol is used to display the beginning and ending mileposts of a road that has a change in the designation but not the symbology.

**Motorized Trail Access:**  
This symbol indicates a trailhead for access to a motorized route. Not all motorized routes have trailheads and those that do may range from primitive to developed.

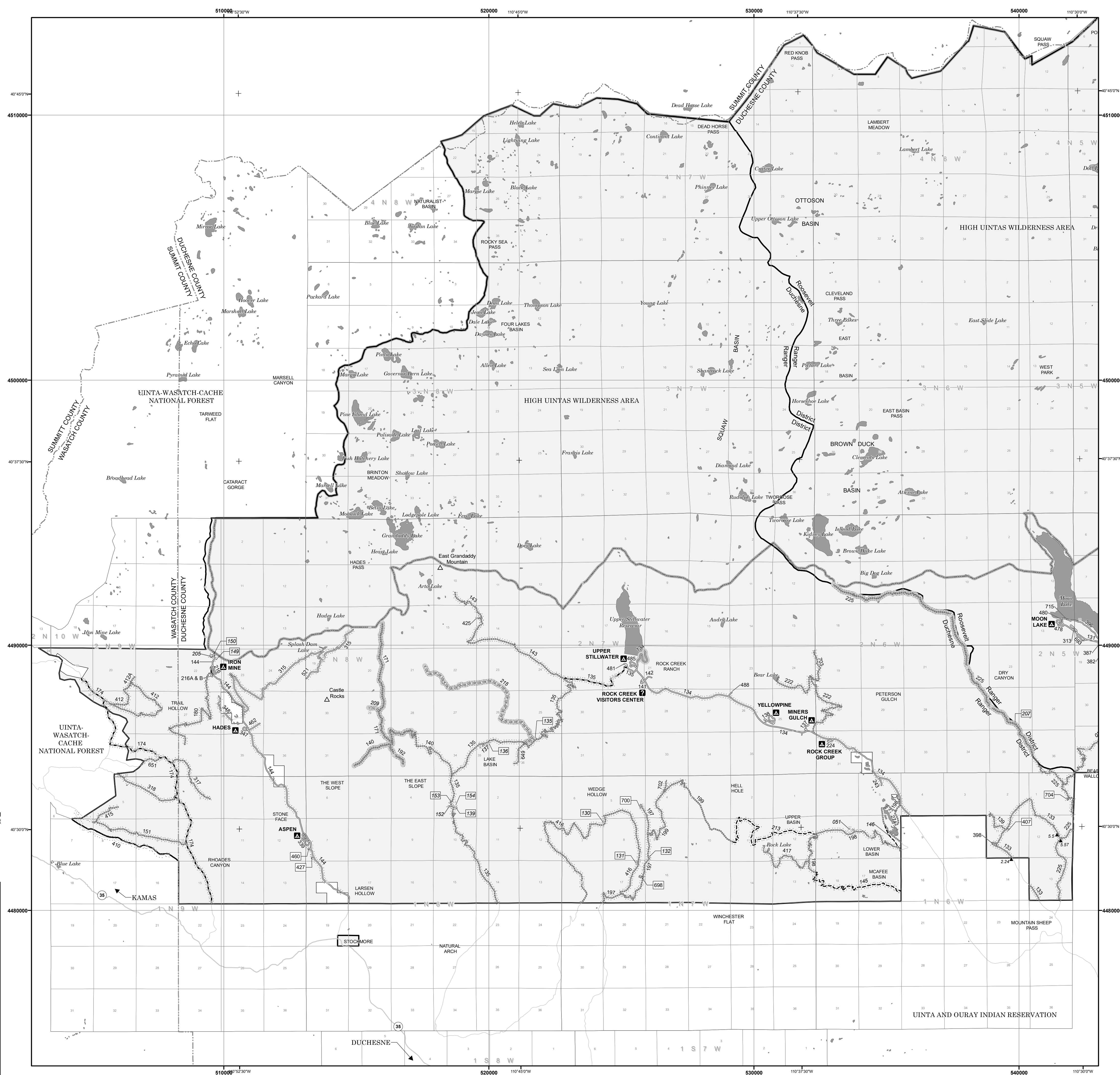
**BLANKET STATEMENT FOR TRAVEL MANAGEMENT**

All ROADS with special designations are open to:  
• High Clearance Vehicles  
• All Non-Highway Legal Vehicles Wider Than 50 Inches  
• Wheeled Non-Highway Legal Vehicles 50 Inches Wide or Less

All TRAILS with a seasonal designation are open from 06/01 to 10/01.

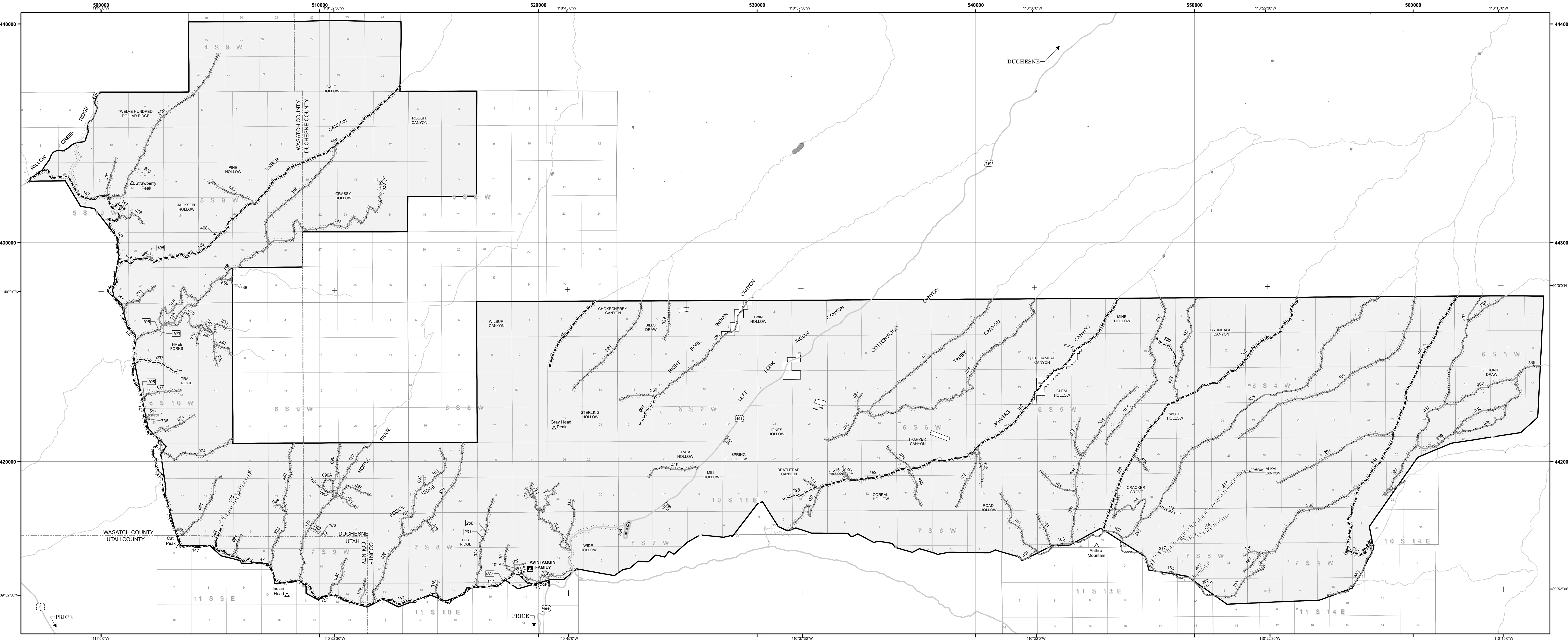
Refer to the Seasonal Designation (ROADS) Table for the ROADS with seasonal use.

**Riparian Areas:**  
Motor vehicle use off a forest road or trail for purposes of Dispersed Camping shall be at least 100 feet from a stream, wetland or other body of water, unless signed as exempt. (NOTE: This regulation does not apply to reservoirs.)



### DUCHENSE NORTH UNIT





**DUCHESNE SOUTH UNIT**

**Legend**

- Roads Open to Highway Legal Vehicles
- Roads Open to All Vehicles
- Trails Open to All Vehicles
- Trails Open to Vehicles 50' or Less in Width
- Special Designation (See Table)
- Dispersed Camping, Both Sides (See Table)
- Highways, US, State, County
- Other Public Roads
- 70333 Short Route Identifier
- ▲ Milepost Marker
- ▲ FS Campgrounds
- ▲ Peaks
- ▭ Forest or Unit Boundary
- ▭ National Forest System Lands
- ▭ Non-National Forest System Lands within the National Forest
- ▭ Wilderness Areas
- ▭ Political Boundary
- ▭ Township and Range Lines
- ▭ Section Lines
- ▭ Lakes and Rivers

0 0.5 1 2 3 4 Miles

Dispersed Camping						Distance/ Side of Road/Trail	Vehicle Type	Dates Allowed
Trail Number								
039	098	131	145	188	213	150 feet off center line of the road	Same as permitted on the road	Same as permitted on the road
051	100	132	149	200	215			
070	105	135	150	201	217			
075	106	136	152	205	218			
077	108	137	153	207	219			
097	130	139	154	209				
Road Number								
033	111	179	309	407	670			
066	114	180	315	408	677			
067	131	186	316	412	697			
070	133	192	317	412A	698			
071	134	197	318	415	700			
074	139	198	320	416	702			
081	140	199	323	417	703			
082	143	200	324	419	704			
084	144	203	326	425	719			
085	147	206	327	427	721			
089	148	222	328	460	736			
090	149	224	329	462	738			
090A	150	225	330	488	739			
091	151	243	348	517	740			
097	168	300	358	521	741			
098	169	301	360	649				
101	171	302	382	651				
103	174	303	387	655				
108	175	304	398	656				

Roads Too Short to Be Seen Clearly on the Map		
Road Number	Route Designation	Length in Feet
<b>Duchesne Roads</b>		
407	Special Vehicle Designation	369
427	Road Open to Highway Legal Vehicles	345
460	Road Open to Highway Legal Vehicles	412
698	Special Vehicle Designation	449
700	Special Vehicle Designation	364
704	Special Vehicle Designation	529

Trails Too Short to Be Seen Clearly on the Map		
Trail Number	Route Designation	Length in Feet
<b>Duchesne Trails</b>		
077	Trail Open to All Vehicles	248
100	Trail Open to All Vehicles	820
105	Trail Open to All Vehicles	667
106	Trail Open to All Vehicles	190
108	Trail Open to All Vehicles	215
130	Trail Open to All Vehicles	279
131	Trail Open to All Vehicles	364
132	Trail Open to All Vehicles	214
135	Trail Open to All Vehicles	283
136	Trail Open to All Vehicles	235
139	Trail Open to All Vehicles	524
150	Trail Open to All Vehicles	412
153	Trail Open to All Vehicles	155
154	Trail Open to All Vehicles	267
200	Trail Open to All Vehicles	347
201	Trail Open to All Vehicles	289
207	Trail Open to All Vehicles	251

Seasonal and Special Vehicle Designations (South Unit)					
Route Number	Legend	Special Vehicle Designation	Dates Allowed	Beginning Mile Post	Ending Mile Post
219	Special Vehicle Designation	Four Wheel Drive Non-Highway Legal Vehicles Wider Than 50 Inches, But Less Than 60 Inches	01/01-12/31	0.000	2.074
033, 066, 067, 070, 071, 074, 081, 084, 085, 089, 090, 090A, 091, 097, 098, 101, 102, 102A, 103, 108, 111, 114, 128, 148, 152, 161, 162, 163, 164, 167, 168, 169, 172, 179, 191, 200, 201, 202, 203, 206, 207, 301, 302, 309, 316, 320, 323, 324, 326, 327, 328, 329, 330, 331, 332, 335, 336, 337, 338, 342, 358, 360, 419, 472, 489, 490, 491, 496, 497, 498, 499, 517, 609, 615, 655, 656, 657, 658, 713, 719, 721, 736, 738, 740	Special Vehicle Designation	High Clearance Vehicles, All Non-Highway Legal Vehicles Wider Than 50 Inches, Wheeled Non-Highway Legal Vehicles 50 Inches Wide or Less	01/01-12/31		
304	Roads open to highway legal vehicles only, with Seasonal Designation		06/01-10/01	0.000	0.400

Seasonal and Special Vehicle Designations (North Unit)					
Route Number	Legend	Special Vehicle Designation	Dates Allowed	Beginning Mile Post	Ending Mile Post
209, 215	Trails open to all vehicles, with Seasonal Designation	Seasonal Designation	06/01-10/01		
133, 135, 139, 143, 151, 180, 181, 197, 199, 222, 274, 317, 318, 398, 407, 412, 412A, 415, 416, 417, 425, 649, 651, 697, 698, 700, 702, 703, 704	Special Vehicle Designation	High Clearance Vehicles, All Non-Highway Legal Vehicles Wider Than 50 Inches, Wheeled Non-Highway Legal Vehicles 50 Inches Wide or Less	01/01-12/31		
134	Roads open to highway legal vehicles only, with Seasonal Designation	Seasonal Designation	06/01-10/01	8.300	8.990
140	Special Vehicle Designation	High Clearance Vehicles, All Non-Highway Legal Vehicles Wider Than 50 Inches, Wheeled Non-Highway Legal Vehicles 50 Inches Wide or Less	01/01-12/31	0.000	1.870
140	Special Vehicle Designation, with Seasonal Designation	High Clearance Vehicles, All Non-Highway Legal Vehicles Wider Than 50 Inches, Wheeled Non-Highway Legal Vehicles 50 Inches Wide or Less	06/01-10/01	1.870	4.190
171, 192	Special Vehicle Designation, with Seasonal Designation	High Clearance Vehicles, All Non-Highway Legal Vehicles Wider Than 50 Inches, Wheeled Non-Highway Legal Vehicles 50 Inches Wide or Less	06/01-10/01		
198	Special Vehicle Designation	High Clearance Vehicles, All Non-Highway Legal Vehicles Wider Than 50 Inches, Wheeled Non-Highway Legal Vehicles 50 Inches Wide or Less	01/01-12/31	0.000	1.830
198	Special Vehicle Designation	High Clearance Vehicles, All Non-Highway Legal Vehicles Wider Than 50 Inches, Wheeled Non-Highway Legal Vehicles 50 Inches Wide or Less	01/01-12/31	2.210	6.583
225	Special Vehicle Designation	High Clearance Vehicles, All Non-Highway Legal Vehicles Wider Than 50 Inches, Wheeled Non-Highway Legal Vehicles 50 Inches Wide or Less	01/01-12/31	0.400	2.500
225	Special Vehicle Designation	High Clearance Vehicles, All Non-Highway Legal Vehicles Wider Than 50 Inches, Wheeled Non-Highway Legal Vehicles 50 Inches Wide or Less	01/01-12/31	2.890	5.482
225	Special Vehicle Designation, with Seasonal Designation	High Clearance Vehicles, All Non-Highway Legal Vehicles Wider Than 50 Inches, Wheeled Non-Highway Legal Vehicles 50 Inches Wide or Less	07/01-10/01	5.482	13.200

North American Datum of 1983 (NAD 83)  
Universal Transverse Mercator, zone 12