

United States Department of Agriculture
Forest Service
UTAH
America's Great Outdoors
Ranger Districts
Monticello
National Forest
Manti-La Sal
Use Map
Motor Vehicle

PURPOSE AND CONTENTS OF THIS MAP

The designations shown on this motor vehicle use map (MVUM) were made by the responsible official pursuant to 36 CFR 212.51; are effective as of the date of this MVUM; and will remain in effect until superseded by the next year's MVUM.

Frank Neal
Forest Supervisor, Manti-La Sal National Forest

It is the responsibility of the user to acquire the current MVUM. This MVUM shows the National Forest System roads, National Forest System trails, and the areas on National Forest System lands in the Monticello Ranger District that are designated for motor vehicle use pursuant to 36 CFR 212.51. This MVUM also identifies the vehicles classes allowed on each route and in each area and any seasonal restrictions that apply on those routes and in those areas.

Designation of a road, trail, or area for motor vehicle use by a particular class of vehicle under 36 CFR 212.51 should not be interpreted as encouraging or inviting use, or to imply that the road, trail, or area is passable, actively maintained, or safe for travel. Motor vehicle designations include parking along designated routes and at facilities associated with designated routes when it is safe to do so and will not cause damage to National Forest System resources. Seasonal weather conditions and natural events may render designated roads and trails impassable for extended periods. Designated areas may contain dangerous or impassable terrain. Many designated roads and trails may be passable only by high-clearance vehicles or four-wheel drive vehicles. Maintenance of designated roads and trails will depend on available resources, and many may receive little maintenance.

This motor vehicle use map identifies those roads, trails, and areas designated for the motor vehicle use under 36 CFR 212.51 for the purpose of enforcing the prohibition at 36 CFR 261.13. This is a limited purpose. The other public roads are shown for information and navigation purposes only and are not subject to designation under the Forest Service travel management regulation.

These designations apply only to National Forest System roads, National Forest System trails, and areas on National Forest System lands.

PROHIBITIONS

It is prohibited to possess or operate a motor vehicle on National Forest System lands on the Manti-La Sal National Forest other than in accordance with these designations (36 CFR 261.13).

Violations of 36 CFR 261.13 are subject to a fine of up to \$5,000 or imprisonment for up to 6 months or both (18 U.S.C. 3571(e)). This prohibition applies regardless of the presence or absence of signs.

This map does not display nonmotorized uses, over-snow uses, or other facilities and attractions on the Monticello Ranger District. Obtain a forest visitor map for more complete information.

Designated roads, trails, and areas may also be subject to temporary, emergency closures, and visitors must comply with signs notifying them of such restrictions. A national forest may issue an order to close a road, trail, or area on a temporary basis to protect the life, health or safety of forest visitors or the natural or cultural resources in these areas. Such a temporary and/or emergency closure are consistent with the Travel Management Rule (36 CFR 212.52 (b); 36 CFR 261 subpart B).

The designation "road or trail open to all motor vehicles" does not supersede vehicle size or weight limits imposed through State traffic law.

OPERATOR RESPONSIBILITIES

Operating a motor vehicle on National Forest System roads, National Forest System trails, and in areas on National Forest System lands carries a greater responsibility than operating that vehicle in a city or other developed setting. Not only must the motor vehicle operators know and follow all applicable traffic laws, but they need to show concern for the environment as well as other forest users. The misuse of motor vehicles can lead to the temporary or permanent closure of any designated road, trail, or area. Operators of motor vehicles are subject to State traffic law, including State requirements for licensing, registration, and operation of the vehicle in question.

Motor vehicle use, especially off-highway vehicle use, involves inherent risks that may cause property damage, serious injury, and possibly death to participants. Riders should drive cautiously and anticipate rough surfaces and features, such as snow, mud, vegetation, and water crossings common to remote driving conditions. Participants voluntarily assume full responsibility for these damages, risks, and dangers. Motor vehicle operators should take care at all times to protect themselves and those under their responsibility.

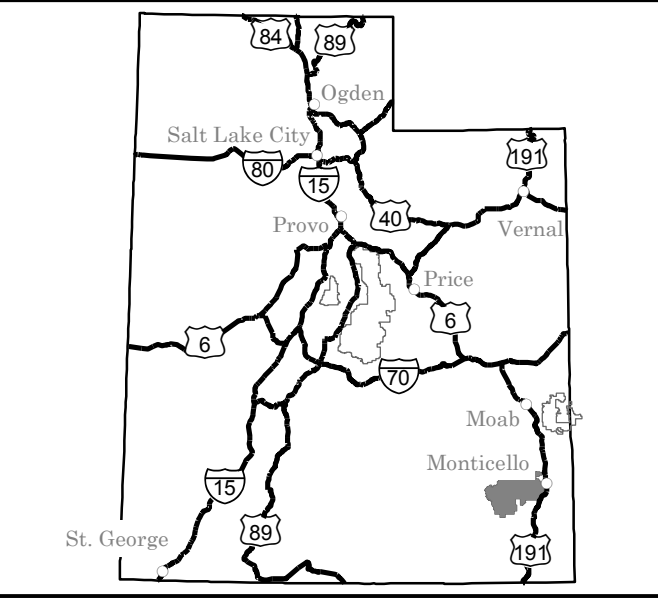
Much of the Manti-La Sal National Forest is remote, and medical assistance may not be readily available. Cellular telephones do not work in many areas of the Monticello Ranger District. Operators should take adequate food, water, first aid supplies, and other equipment appropriate for the conditions and expected weather.

ALWAYS REMEMBER TO RESPECT PRIVATE LAND! PROTECT YOUR PRIVILEGE. STAY ON DESIGNATED ROADS AND TRAILS AND IN DESIGNATED AREAS.

Read and understand this map in its entirety. If you have questions please contact the Manti-La Sal National Forest for clarification.

Road, trail, and area users must comply with this map, as well as all Federal, State, and local laws and regulations. Compliance with these rules is the responsibility of the user.

VICINITY MAP



INFORMATION SOURCES

Manti-La Sal National Forest Supervisor's Office
599 West Price River Drive
Price, UT 84501
435-637-2817

Ferron-Price Office
115 West Canyon Road
Ferron, UT 84523
435-384-2372

Moab Office
62 East 100 North
Moab, UT 84532
435-259-7155

Monticello Office
432 E Center St
Monticello, UT 84535
435-587-2041

Sanpete Office
540 North Main Street
Ephraim, UT 84627
435-283-4151

For Specific Road and Trail Opening Dates check <http://www.fs.usda.gov/mantilasal/>

For Emergency Services Dial 911

Legend

- Roads Open to Highway Legal Vehicles
- Roads Open to all Vehicles
- Trails Open to all Vehicles
- Trails Open to Vehicles 50" or Less in Width
- Trails Open to Wheeled Vehicles 50" or Less in Width
- Trails Open to Motorcycles Only
- Special Vehicle Designation (See Table)
- Seasonal Designation (See Table)
- Interstate
- Highways, U.S., State, County
- Other Public Roads
- Other Public Trails
- Short Route Identifier
- Milepost Marker
- FS Campgrounds
- Picnic Area
- Motorized Trailhead
- Information Site
- Peaks
- Forest Boundary
- National Forest System Lands
- Non-National Forest System Lands within the National Forest
- Wilderness Areas
- Political Boundary
- Township and Range Lines
- Section Lines
- Large Lakes and Rivers

EXPLANATION OF LEGEND ITEMS

Roads Open to Highway Legal Vehicles Only:
Roads open only to motor vehicles licensed under State law for general operation on all public roads.

Roads Open to All Vehicles:
Roads open to all motor vehicles, including smaller off highway vehicles that may not be licensed for highway use (not to oversize or overweight vehicles under State traffic law).

Trails Open to All Vehicles:
Trails open to all motor vehicles, including both highway legal and nonhighway legal vehicles.

Trails Open to Vehicles 50" or Less in Width:
Trails open only to motor vehicles less than 50 inches in width at the widest point on the vehicle.

Trails Open to Wheeled Vehicles 50" or Less in Width:
These trails are open open to wheeled, motor vehicles less than 50" in width at the widest point on the vehicle.

Trails Open to Motorcycles Only:
Trails open only to motorcycles. Sidecars are not permitted.

Seasonal Designation:
This symbol, used in conjunction with one of the other road or trail symbols, indicates that the road or trail is open only during certain portions of the year. Refer to Seasonal and Special Designation Table for further instructions.

Other Public Roads and Trails:
Interstate
Highways, U.S., State, County
Other Public Roads
Other Public Trails
Used to show routes not designated for motorized use by the Forest Service. Part of the reference layers showing connections to towns and cities outside the forest boundary.

Short Route Identifier:
70333
Used for roads that are too short to show an actual symbol type on the map. The symbol with the arrow pointing away from the road will direct the user to a table that contains a corresponding road number for more information.

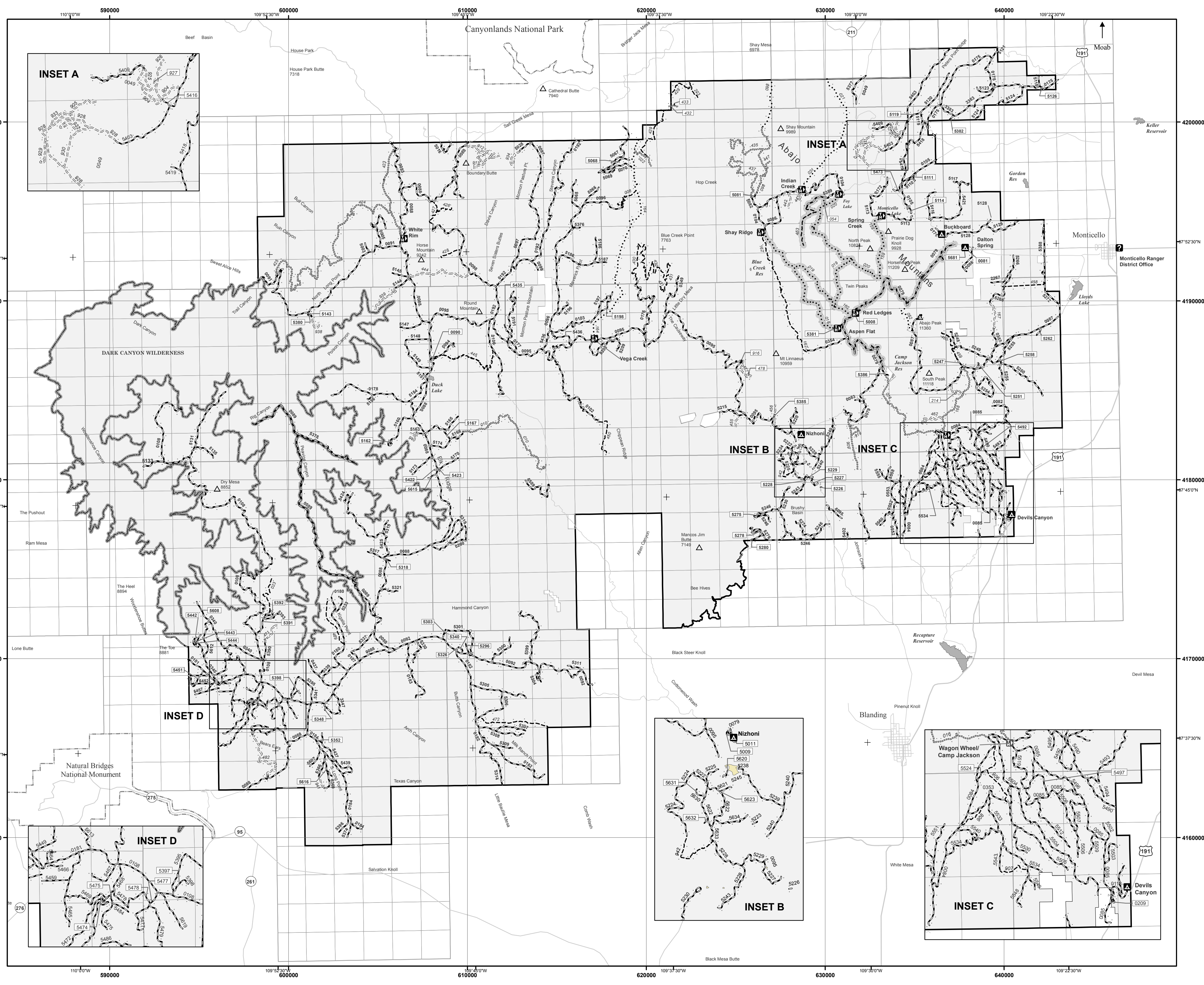
Milepost Marker:
Used to display the beginning and ending mileposts of a road that has a change in the designation but not the symbology.

Motorized Trail Access:
This symbol indicates a trail head for access to a motorized route. Not all motorized routes have trail heads and those that do may range from primitive to developed.

BLANKET STATEMENTS FOR TRAVEL MANAGEMENT

Motor vehicle use off of designated roads and trails for the purpose of dispersed camping is permitted for up to 150 feet from the centerline of the road or trail from the period 01/01 to 12/31. The exception is the Peavine Corridor through the Dark Canyon Wilderness, where dispersed camping is permitted up to 33 feet from the centerline.

Complete route numbers begin with the number 5 for the Manti-La Sal National Forest. Route numbers shown on the table include this prefix (ex. 50014). Route numbers shown the map do not (ex. 0014).



Monticello Ranger District

Dispersed Camping

Route Number	Distance/Side of Road	Vehicle Type	Dates Allowed
50089, 50378	33' either side	Same as permitted on road	Same as permitted on road
All other routes	150' either side	Same as permitted on road	Same as permitted on road

Seasonal and Special Vehicle Designations

Route Number	Legend	Special Vehicle Designation	Dates Allowed
5010, 5098, 5108, 5423, 5424, 5425, 5435, 5437, 5447, 5509, 5519	Special Vehicle Designation	Trails open to vehicles 60" or less in width with 4 or more low pressure tires	Year-round
50079	Roads open to all Vehicles, with Seasonal Designation	Seasonal Designation	08/17-09/30
5018, 5019, 5020, 5054, 5159, 5160	Trails open to motorcycles, with Seasonal Designation	Seasonal Designation	05/16-09/30
5463	Trails open to vehicles 50" or less in width, with Seasonal Designation	Seasonal Designation	05/16-09/30

Routes Too Short to Be Seen Clearly on the Map

Route Number	Legend
5054	Trails Open to Motorcycles Only, Seasonal
5214, 5478	Trails Open to All Vehicles, Yearlong
5432, 5433, 5916, 5927	Trails Open to Vehicles 50" or Less in Width, Yearlong
50081, 50090, 50209, 50008, 50009, 50011, 50068, 50081, 50111, 50114, 50119, 50126, 50143, 50162, 50167, 50198, 50226, 50227, 50228, 50229, 50247, 50251, 50262, 50275, 50278, 50280, 50286, 50303, 50318, 50326, 50340, 5048, 50532, 50380, 50381, 50382, 50385, 50386, 50391, 50392, 50397, 50398, 50416, 50422, 50423, 50435, 50442, 50443, 50444, 50451, 50473, 50474, 50475, 50477, 50478, 50497, 50524, 50608, 50615, 50616, 50620, 50623, 50631, 50632, 50634, 50635, 50636, 50637, 50638, 50639, 50640, 50641, 50642, 50643, 50644, 50645, 50646, 50647, 50648, 50649, 50650, 50651, 50652, 50653, 50654, 50655, 50656, 50657, 50658, 50659, 50660, 50661, 50662, 50663, 50664, 50665, 50666, 50667, 50668, 50669, 50670, 50671, 50672, 50673, 50674, 50675, 50676, 50677, 50678, 50679, 50680, 50681, 50682, 50683, 50684, 50685, 50686, 50687, 50688, 50689, 50690, 50691, 50692, 50693, 50694, 50695, 50696, 50697, 50698, 50699, 50700, 50701, 50702, 50703, 50704, 50705, 50706, 50707, 50708, 50709, 50710, 50711, 50712, 50713, 50714, 50715, 50716, 50717, 50718, 50719, 50720, 50721, 50722, 50723, 50724, 50725, 50726, 50727, 50728, 50729, 50730, 50731, 50732, 50733, 50734, 50735, 50736, 50737, 50738, 50739, 50740, 50741, 50742, 50743, 50744, 50745, 50746, 50747, 50748, 50749, 50750, 50751, 50752, 50753, 50754, 50755, 50756, 50757, 50758, 50759, 50760, 50761, 50762, 50763, 50764, 50765, 50766, 50767, 50768, 50769, 50770, 50771, 50772, 50773, 50774, 50775, 50776, 50777, 50778, 50779, 50780, 50781, 50782, 50783, 50784, 50785, 50786, 50787, 50788, 50789, 50790, 50791, 50792, 50793, 50794, 50795, 50796, 50797, 50798, 50799, 50800, 50801, 50802, 50803, 50804, 50805, 50806, 50807, 50808, 50809, 50810, 50811, 50812, 50813, 50814, 50815, 50816, 50817, 50818, 50819, 50820, 50821, 50822, 50823, 50824, 50825, 50826, 50827, 50828, 50829, 50830, 50831, 50832, 50833, 50834, 50835, 50836, 50837, 50838, 50839, 50840, 50841, 50842, 50843, 50844, 50845, 50846, 50847, 50848, 50849, 50850, 50851, 50852, 50853, 50854, 50855, 50856, 50857, 50858, 50859, 50860, 50861, 50862, 50863, 50864, 50865, 50866, 50867, 50868, 50869, 50870, 50871, 50872, 50873, 50874, 50875, 50876, 50877, 50878, 50879, 50880, 50881, 50882, 50883, 50884, 50885, 50886, 50887, 50888, 50889, 50890, 50891, 50892, 50893, 50894, 50895, 50896, 50897, 50898, 50899, 50900, 50901, 50902, 50903, 50904, 50905, 50906, 50907, 50908, 50909, 50910, 50911, 50912, 50913, 50914, 50915, 50916, 50917, 50918, 50919, 50920, 50921, 50922, 50923, 50924, 50925, 50926, 50927, 50928, 50929, 50930, 50931, 50932, 50933, 50934, 50935, 50936, 50937, 50938, 50939, 50940, 50941, 50942, 50943, 50944, 50945, 50946, 50947, 50948, 50949, 50950, 50951, 50952, 50953, 50954, 50955, 50956, 50957, 50958, 50959, 50960, 50961, 50962, 50963, 50964, 50965, 50966, 50967, 50968, 50969, 50970, 50971, 50972, 50973, 50974, 50975, 50976, 50977, 50978, 50979, 50980, 50981, 50982, 50983, 50984, 50985, 50986, 50987, 50988, 50989, 50990, 50991, 50992, 50993, 50994, 50995, 50996, 50997, 50998, 50999, 51000	