

INFORMATION SOURCES

MINIDOKA RANGER DISTRICT
2306 Hilland Ave.
Burley, Idaho 83318
(208) 678-0430

FOREST HEADQUARTERS
Sawtooth National Forest
Jerome, ID 83338
(208) 423-7500

REPORT ALL FOREST FIRES
(208) 733-3627

In Case of Emergency
Dial 9-1-1



tread lightly!
LEAVING A GOOD IMPRESSION

Travel and recreate with minimum impact.
Respect the environment and the rights of others.
Educate yourself, plan and prepare before you go.
Allow for future use of the outdoors by leaving it better than you found it.
Discover the rewards of responsible recreation.

For more information on Tread Lightly! Go to www.treadlightly.org or call 1-800-966-9900

The U.S. Department of Agriculture (USDA) prohibits discrimination in all its programs and activities on the basis of race, color, national origin, age, disability, and where applicable, sex, marital status, familial status, parental status, religion, sexual orientation, genetic information, political beliefs, reprisal, or because all or part of an individual's income is derived from any public assistance program. (Not all prohibited bases apply to all programs.) Persons with disabilities who require alternative means for communication of program information (Braille, large print, audiotape, etc.) should contact USDA's TARGET Center at (202) 720-2600 (voice and TDD). To file a complaint of discrimination, write to USDA, Director, Office of Civil Rights, 1400 Independence Avenue, S.W., Washington, D.C. 20250-9410, or call (800) 795-3272 (voice) or (202) 720-6382 (TDD). USDA is an equal opportunity provider and employer.

Legend

- Roads Open to Highway Legal Vehicles
- Roads Open to All Vehicles
- Trails Open to All Vehicles
- Trails Open to Vehicles 50" or Less in Width
- Trails Open to Motorcycles Only
- Seasonal Designation (See Table)
- Dispersed Camping, Both Sides
- Interstate
- Highways, U.S. State
- Other Public Roads
- FS Campground
- Motorized Trailhead
- Information Site
- Peaks
- Forest or Unit Boundary
- National Forest System Lands
- Non-National Forest System Lands within the National Forest
- Political Boundary
- Township and Range Lines
- Section Lines
- Lakes and Rivers

Scale: 0 1 2 3 4 Miles

PROHIBITIONS

It is prohibited to possess or operate a motor vehicle on National Forest System lands on the Minidoka Ranger District other than in accordance with these designations (CFR 261.13)

Violators of 36 CFR 261.13 are subject to a fine of up to \$5,000, imprisonment for up to 6 months, or both (18 U.S.C. 3571(e)). This prohibition applies regardless of the presence or absence of signs.

This map does not display nonmotorized uses, over-snow uses, or other facilities and attractions on the Minidoka Ranger District. Obtain forest visitor information from the local national forest office.

Designated roads, trails and areas may also be subject to temporary, emergency closures. As a visitor, you must comply with signs notifying you of such restrictions. A national forest may issue an order to close a road, trail or area on a temporary basis to protect the life, health, or safety of forest visitors or the natural or cultural resources in these areas. Such a temporary and/or emergency closures are consistent with the Travel Management Rule (36 CFR 212.52 (b), 36 CFR 261 subpart B).

The designation "road or trail open to all motor vehicles" does not supersede State traffic law.

EXPLANATION OF LEGEND ITEMS

Roads Open to Highway Legal Vehicles Only:
These roads are open only to motor vehicles licensed under State law for general operation on all public roads within the state.

Roads Open to All Vehicles:
These roads are open to all motor vehicles, including smaller off-highway vehicles that may not be licensed for highway use (but not to oversize or overweight vehicles under State traffic law).

Trails Open to All Vehicles:
These trails are open to all motor vehicles, including both highway legal and nonhighway legal vehicles.

Trails Open to Vehicles 50 inches or Less in Width:
Trails open only to motor vehicles less than 50 inches in width at the widest point on the vehicle.

Trails Open to Motorcycles Only:
These trails are open only to motorcycles. Sidecars are not permitted.

Seasonal Designation:
This symbol, used in conjunction with one of the other road or trail symbols, indicates that the road or trail is open only during certain portions of the year. Refer to Seasonal Designation Table for further instructions.

Dispersed Camping:
Dispersed Camping, Both Sides
This symbol is used along with a designated road or trail to indicate limited cross-country motor vehicle use with a specific distance of that route, solely for the purpose of dispersed camping. The dots indicate where this activity is permitted. They may be on the left, right, or both sides of the route.

Other Public Roads and Trails:
Interstate
Highways, U.S. State
Other Public Roads

These symbols are used to show routes the Forest Service does not have jurisdiction over and has not designated for motorized use. These symbols are part of the reference layers showing connections to towns and cities outside the forest boundary.

Motorized Trail Access:
This symbol indicates a trailhead for access to a motorized route. Not all motorized routes have trailheads and those that do may range from primitive to developed.

OPERATOR RESPONSIBILITIES

Operating a motor vehicle on National Forest System roads, National Forest System trails, and in areas on National Forest System lands carries a greater responsibility than operating that vehicle in a city or other developed setting. Not only must you know and follow all applicable traffic laws, you need to show concern for the environment as well as other forest users. The misuse of motor vehicles can lead to the temporary or permanent closure of any designated road, trail, or area. As a motor vehicle operator, you are also subject to State traffic law, including State requirements for licensing, registration, and operation of the vehicle in question.

Motor vehicle use, especially off-highway vehicle use, involves inherent risks that may cause property damage, serious injury, and possibly death to participants. Drive cautiously and anticipate rough surfaces and features, such as snow, mud, vegetation, and water crossings common to remote driving conditions. By your participation, you voluntarily assume full responsibility for these damages, risks, and dangers. Take care at all times to protect yourself and those under your responsibility.

Much of the Minidoka Ranger District is remote. Medical assistance may not be readily available. Cellular telephones do not work in many areas of the Minidoka Ranger District. Take adequate food, water, first-aid supplies, and other equipment appropriate for the conditions and expected weather.

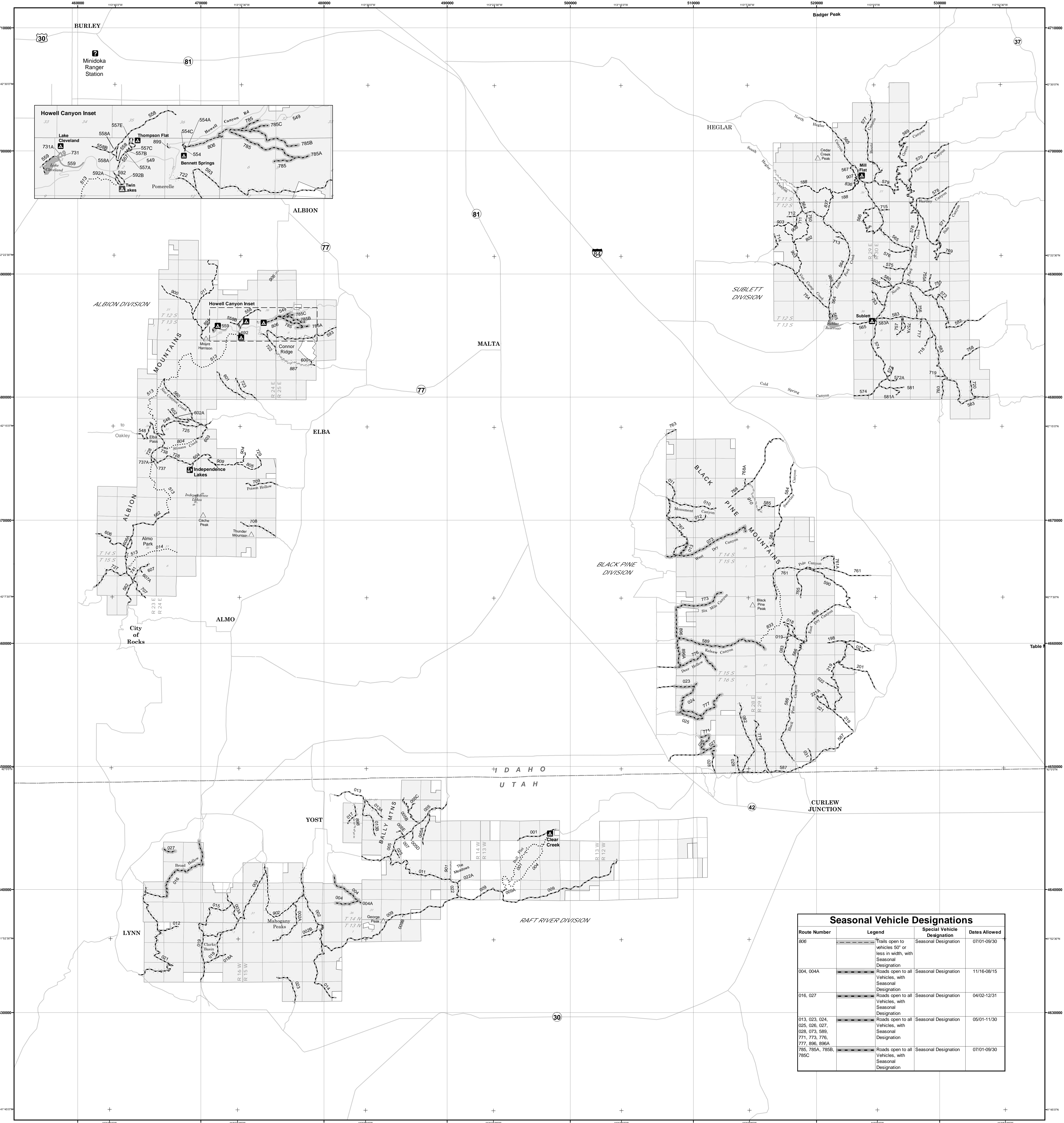
ALWAYS REMEMBER TO RESPECT PRIVATE LAND! PROTECT YOUR PRIVILEGE. STAY ON DESIGNATED ROADS AND TRAILS AND IN DESIGNATED AREAS.

Read and understand this map in its entirety. If you have questions, please contact the Minidoka Ranger District for clarification.

As a motor vehicle operator on a National Forest System road, trail, or area you must comply with this map, as well as all Federal, State, and local laws and regulations. Compliance with these rules is your responsibility.

BLANKET STATEMENTS FOR TRAVEL MANAGEMENT

Where designated on the Motor Vehicle Use Map, motor vehicle use off of designated roads and trails for the purpose of dispersed camping is permitted for up to 300 feet from the centerline of the road and 100 feet from the centerline of the trail when it is safe to do so and when not causing damage to National Forest System resources.



Seasonal Vehicle Designations

Route Number	Legend	Special Vehicle Designation	Dates Allowed
806	Trails open to vehicles 50" or less in width, with Seasonal Designation	Seasonal Designation	07/01-09/30
004, 004A	Roads open to all Vehicles, with Seasonal Designation	Seasonal Designation	11/16-08/15
016, 027	Roads open to all Vehicles, with Seasonal Designation	Seasonal Designation	04/02-12/31
013, 023, 024, 025, 026, 027, 028, 073, 589, 771, 773, 776, 777, 896, 898A, 785, 785A, 785B, 785C	Roads open to all Vehicles, with Seasonal Designation	Seasonal Designation	05/01-11/30
	Roads open to all Vehicles, with Seasonal Designation	Seasonal Designation	07/01-09/30