

UNITED STATES DEPARTMENT OF AGRICULTURE  
FOREST SERVICE

## UTAH

America's Great Outdoors



### Motor Vehicle Use Map

Manti-La Sal National Forest  
Ferron, Price, Sanpete Ranger Districts

### PURPOSE AND CONTENTS OF THIS MAP

The designations shown on this motor vehicle use map (MVUM) were made by the responsible official pursuant to 36 CFR 212.51, as effective as of the date on the front cover of this MVUM, and will remain in effect until superseded by next year's MVUM.

*Carole E. Brown*  
Forest Supervisor, Manti-La Sal National Forest

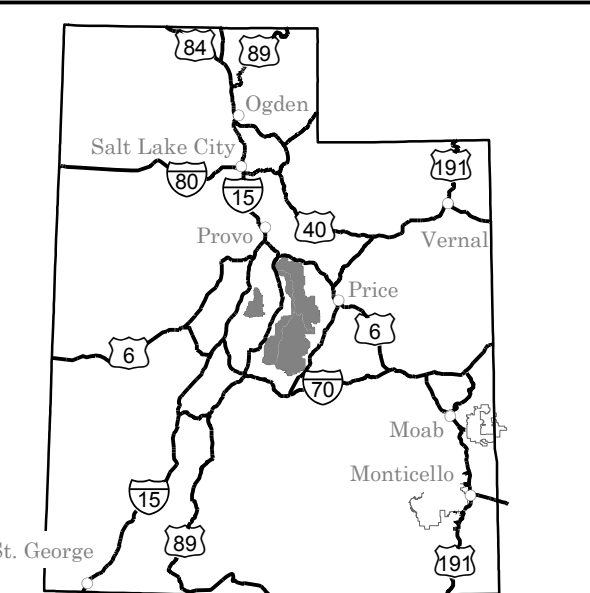
It is the responsibility of the user to acquire the current MVUM. This MVUM shows the National Forest System roads, National Forest System trails, and the areas on National Forest System lands in the Manti-La Sal National Forest that are designated for motor vehicle use pursuant to 36 CFR 212.51. This MVUM also identifies the vehicle classes allowed on each route and in each area, and any seasonal restrictions that apply on those routes and in those areas.

Designation of a road, trail, or area for motor vehicle use by a particular class of vehicle under 36 CFR 212.51 should not be interpreted as encouraging or inviting use or implying that the road, trail, or area is passable, actively maintained, or safe for travel. Motor vehicle designations include parking along designated routes and at facilities associated with designated routes when it is safe to do so and when not causing damage to National Forest System resources. Seasonal weather conditions and natural events may render designated roads and trails impassable for extended periods. Designated areas may contain dangerous or impassable terrain. Many designated roads and trails may be passable only by high-clearance vehicles or four-wheel-drive vehicles. Maintenance of designated roads and trails will depend on available resources, and many may receive little maintenance.

This motor vehicle use map identifies those roads, trails, and areas designated for the motor vehicle use under 36 CFR 212.51 for the purpose of enforcing the prohibition at 36 CFR 261.13. This is a limited purpose. The other public roads are shown for information and navigation purposes only and are not subject to designation under the Forest Service travel management regulation.

These designations apply only to National Forest System roads, National Forest System trails, and areas on National Forest System lands.

### VICINITY MAP



### INFORMATION SOURCES

Manti-La Sal National Forest Supervisor's Office  
599 West Price River Drive  
Price, UT 84501  
435-637-2817

Ferron-Price Office Moab Office  
115 West Canyon Road 62 East 100 North  
Ferron, UT 84523 Moab, UT 84532  
435-384-2372 435-259-7155

Monticello Office Sanpete Office  
432 E Center St 540 North Main Street  
Monticello, UT 84635 Monticello, UT 84627  
435-587-2041 435-283-4151

For Specific Road and Trail Opening Dates check  
<http://www.fs.fed.us/4/mantisal/>

For Emergency Services  
Dial 911



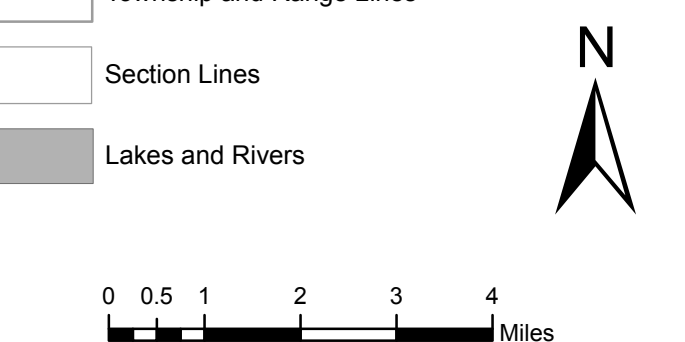
**treadlightly!**  
LEAVING A GOOD IMPRESSION

Travel and recreate with minimum impact.  
Respect the environment and the rights of others.  
Educate yourself plan and prepare before you go.  
Allow for future use of the outdoors by leaving it better than you found it.  
Discover the rewards of responsible recreation.  
For more information on Tread Lightly!, go to [www.treadlightly.org](http://www.treadlightly.org) or call 1-800-966-9900.

The U.S. Department of Agriculture (USDA) prohibits discrimination in all its programs and activities on the basis of race, color, national origin, age, disability, and where applicable, sex, marital status, familial status, parental status, religion, sexual orientation, genetic information, political beliefs, reprisal, or because all or part of an individual's income is derived from any public assistance program. (Not all prohibited bases apply to all programs.) Persons with disabilities who require alternative means for communication of program information (Braille, large print, audiotype, etc.) should contact USDA's TARGET Center at (202) 720-2600 (voice and TDD). To file a complaint of discrimination, write to USDA, Director, Office of Civil Rights, 1400 Independence Avenue, S.W., Washington, D.C. 20250-9410, or call (800) 795-3272 (voice) or (202) 720-6382 (TDD). USDA is an equal opportunity provider and employer.

### Legend

- Roads Open to All Vehicles
- Trails Open to All Vehicles
- Trails Open to Vehicles 50" or Less in Width
- Trails Open to Wheeled Vehicles 50" or Less in Width
- Trails Open to Motorcycles Only
- Special Vehicle Designation (See Table)
- Seasonal Designation (See Table)
- Dispersed Camping
- Highways, U.S. State
- Other Public Roads
- Short Route Identifier
- Milepost Marker
- FS Campground / Picnic Area
- Motorized Trailhead
- Forest or Unit Boundary
- National Forest System Lands
- Non-National Forest System Lands within the National Forest
- Political Boundary
- Township and Range Lines
- Section Lines
- Lakes and Rivers



### PROHIBITIONS

It is prohibited to possess or operate a motor vehicle on National Forest System lands on the Manti-La Sal National Forest other than in accordance with these designations (36 CFR 261.13).

Violators of 36 CFR 261.13 are subject to a fine of up to \$5,000, imprisonment for up to 6 months, or both (18 U.S.C. 3271 (a)). This prohibition applies regardless of the presence or absence of signs.

This map does not display nonmotorized uses, over-snow uses, or other facilities and attractions on the Manti-La Sal National Forest. Obtain forest visitor information from the local national forest office.

Designated roads, trails and areas may also be subject to temporary emergency closures. As a visitor, you must comply with signs notifying you of such restrictions. A national forest may issue an order to close a road, trail or area on a temporary basis to protect the life, health, or safety of forest visitors or the natural or cultural resources in these areas. Such a temporary and/or emergency closure is consistent with the Travel Management Rule (36 CFR 212.52 (b)), 36 CFR 261 subpart B).

The designation "road or trail open to all motor vehicles" does not supersede State traffic law.

### EXPLANATION OF LEGEND ITEMS

**Roads Open to All Vehicles:**  
These roads are open to all motor vehicles, including smaller off-highway vehicles that may not be licensed for highway use (but not over-size or overweight vehicles under State traffic law).

**Trails Open to All Vehicles:**  
These trails are open to all motor vehicles, including both highway legal and nonhighway legal vehicles.

**Trails Open to Vehicles 50 inches or Less in Width:**  
Trails open only to motor vehicles less than 50 inches in width at the widest point on the vehicle.

**Trails Open to Wheeled Vehicles 50" or less in Width:**  
These trails are open only to wheeled, motor vehicles less than 50 inches in width at the widest point on the vehicle.

**Trails Open to Motorcycles Only:**  
These trails are open only to motorcycles. Sidecars are not permitted.

**Special Vehicle Designation:**  
This symbol indicates the road or trail is open to classes of vehicles other than those listed above. Refer to the Seasonal and Special Designation Table for further instructions.

**Seasonal Designation:**  
This symbol, used in conjunction with one of the other road or trail symbols, indicates that the road or trail is open only during certain portions of the year. Refer to Seasonal and Special Designation Table for further instructions.

**Dispersed Camping:**  
This symbol is used along with a designated road or trail to indicate limited cross-country motor vehicle use within a specific distance of that route, solely for the purpose of dispersed camping. The dots indicate where this activity is permitted. They may be on the left, right, or both sides of the route. Refer to the Dispersed Camping Table for specifics.

**Other Public Roads and Trails:**  
Highways, U.S. State  
Other Public Roads

These symbols are used to show routes the Forest Service does not have jurisdiction over and has not designated for motorized use. These symbols are part of the reference layers showing connections to towns and cities outside the forest boundary.

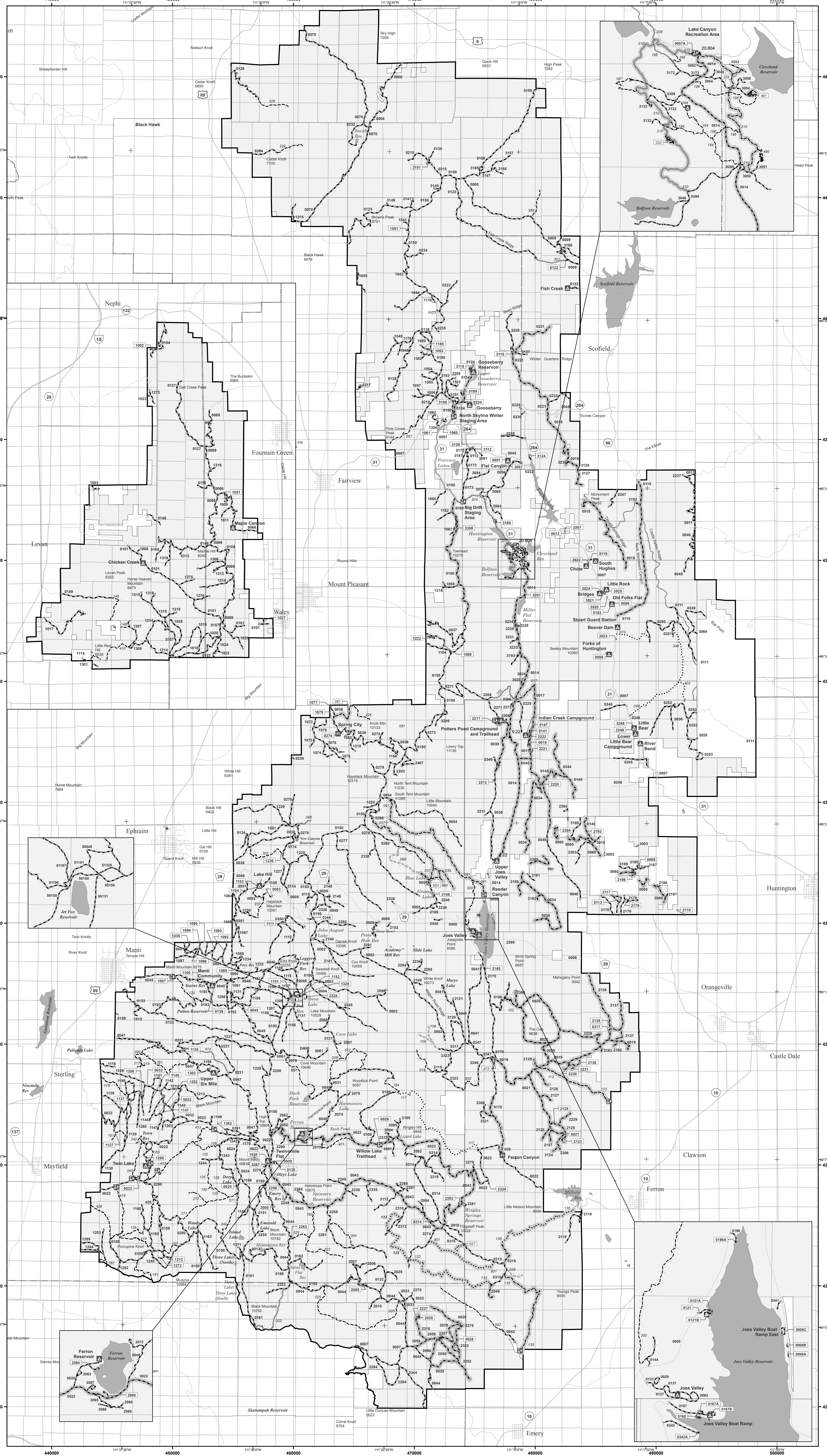
**Short Route Identifier:**  
This symbol is used for roads that are too short to show a symbol type on the map. The symbol contains the number of the road or trail. Users should refer to the corresponding number in the Short Route Table for designation information.

**Milepost Marker:**  
This symbol is used to display the beginning and ending mileposts of a road that has a change in the designation but not the symbology.

**Motorized Trail Access:**  
This symbol indicates a trailhead for access to a motorized road. Not all motorized routes have trailheads and those that do may range from primitive to developed.

### BLANKET STATEMENTS FOR TRAVEL MANAGEMENT

Motor vehicle use of designated roads and trails for the purpose of dispersed camping is permitted for up to 150 feet from the centerline of the road or trail from the period 0101 to 1231, where designated on the Motor Vehicle Use Map.



### Roads and Trails Too Short to Be Seen Clearly on the Map

Route Number	Route Designation	Length in Feet	Designation	Length in Feet	Designation	Length in Feet		
00007	Trails Open to Vehicles 50" or Less in Width	1384.28	1061	Roads Open to All Vehicles	600.80	3001	Roads Open to All Vehicles	417.80
00009	Roads Open to All Vehicles	955.64	1037	Roads Open to All Vehicles	670.42	3012	Roads Open to All Vehicles	399.00
00010	Roads Open to All Vehicles	316.60	1052	Roads Open to All Vehicles	675.81	3013	Roads Open to All Vehicles	370.20
00030	Roads Open to All Vehicles	238.61	1110	Roads Open to All Vehicles	734.83	3016	Roads Open to All Vehicles	370.20
00032	Roads Open to All Vehicles	208.42	1154	Roads Open to All Vehicles	268.83	3019	Roads Open to All Vehicles	339.50
00033	Roads Open to All Vehicles	584.31	1127	Roads Open to All Vehicles	1265.02	3020	Roads Open to All Vehicles	374.20
00034	Roads Open to All Vehicles	1038.84	1116	Roads Open to All Vehicles	734.84	3021	Roads Open to All Vehicles	344.80
00035	Roads Open to All Vehicles	1861.72	1182	Roads Open to All Vehicles	680.35	3026	Roads Open to All Vehicles	481.70
00036	Roads Open to All Vehicles	435.47	1108	Roads Open to All Vehicles	1009.54	3027	Roads Open to All Vehicles	318.10
00037	Roads Open to All Vehicles	1050.99	1151	Roads Open to All Vehicles	630.02	3028	Roads Open to All Vehicles	348.70
00038	Roads Open to All Vehicles	1434.60	1058	Roads Open to All Vehicles	288.02	3029	Roads Open to All Vehicles	330.10
00039	Roads Open to All Vehicles	1898.41	1058	Roads Open to All Vehicles	1331.87	3034	Roads Open to All Vehicles	348.20
00040	Roads Open to All Vehicles	1085.30	1058	Roads Open to All Vehicles	278.75	3035	Roads Open to All Vehicles	221.20
00124	Roads Open to All Vehicles	438.78	1013	Roads Open to All Vehicles	674.32	3039	Roads Open to All Vehicles	388.00
00125	Roads Open to All Vehicles	166.13	1013	Roads Open to All Vehicles	685.02	3039	Roads Open to All Vehicles	370.90
00126	Roads Open to All Vehicles	788.32	1028	Roads Open to All Vehicles	368.82	3039	Roads Open to All Vehicles	370.90
00178	Roads Open to All Vehicles	1086.40	1029	Roads Open to All Vehicles	361.87	3039	Roads Open to All Vehicles	371.40
00184	Roads Open to All Vehicles	1085.18	1012	Roads Open to All Vehicles	351.78	3039	Roads Open to All Vehicles	381.50
00138	Roads Open to All Vehicles	4432.64	1013	Roads Open to All Vehicles	270.51	3039	Roads Open to All Vehicles	429.80
00139	Roads Open to All Vehicles	1748.43	1017	Roads Open to All Vehicles	2011.82	3039	Roads Open to All Vehicles	218.90
00141	Roads Open to All Vehicles	2022.26	1022	Roads Open to All Vehicles	538.11	3040	Roads Open to All Vehicles	748.40
00147	Roads Open to All Vehicles	2122.27	1021	Roads Open to All Vehicles	1007.79	3040	Roads Open to All Vehicles	278.20
00163	Roads Open to All Vehicles	886.33	1022	Roads Open to All Vehicles	1880.61	3039	Roads Open to All Vehicles	274.60
00168	Roads Open to All Vehicles	1434.60	1022	Roads Open to All Vehicles	1434.30	3037	Roads Open to All Vehicles	260.60
00224	Roads Open to All Vehicles	3812.28	1028	Roads Open to All Vehicles	295.17	3030	Roads Open to All Vehicles	73.20
00224	Roads Open to All Vehicles	1085.30	1028	Roads Open to All Vehicles	423.85	3021	Roads Open to All Vehicles	257.20
00243	Roads Open to All Vehicles	324.32	1028	Roads Open to All Vehicles	1044.63	3024	Roads Open to All Vehicles	448.40
00287	Roads Open to All Vehicles	1085.30	1027	Roads Open to All Vehicles	444.17	3029	Roads Open to All Vehicles	371.20
00304	Roads Open to All Vehicles	1310.28	1022	Roads Open to All Vehicles	1000.90	3034	Roads Open to All Vehicles	379.30
00308	Roads Open to All Vehicles	2984.72	1022	Roads Open to All Vehicles	1120.71	3025	Roads Open to All Vehicles	343.90

### Seasonal and Special Vehicle Designations

Route Number	Legend	Special Vehicle Designation	Dates Allowed	Beginning Mile Post	Ending Mile Post	Route Number	Legend	Special Vehicle Designation	Dates Allowed
00014	Roads open to all vehicles with Seasonal Designation	Seasonal Designation	05/20/04-15	2.220	9.220	0005, 0102, 0115, 0136	Trails open to vehicles 50" or less in width with Seasonal Designation	Seasonal Designation	04/16-11/30
00014	Roads open to all vehicles with Seasonal Designation	Seasonal Designation	06/20-12/31	9.220	20.804	0017, 0037, 0039, 0054	Trails open to vehicles 50" or less in width with Seasonal Designation	Seasonal Designation	01/01-04/15, 06/20-12/31
00014, 00022, 00028, 00040, 00041, 00049, 00049, 00110, 00124, 00140, 00150, 00221	Roads open to all vehicles with Seasonal Designation	Seasonal Designation	06/20-12/31			0900	Trails open to vehicles 50" or less in width with Seasonal Designation	Seasonal Designation	01/01-04/15, 06/20-12/31
00020, 00021, 00028, 00170	Roads open to all vehicles with Seasonal Designation	Seasonal Designation	04/16-11/30			0009	Trails open to all vehicles with Seasonal Designation	Seasonal Designation	01/01-04/15, 06/20-12/31
00006, 00017, 00036, 00039, 00040, 00046, 00112, 00123, 00124, 00125, 00127, 00128, 00129, 00130, 00131, 00132, 00133, 00134, 00135, 00136, 00137, 00138, 00139, 00140, 00141, 00142, 00143, 00144, 00145, 00146, 00147, 00148, 00149, 00150, 00151, 00152, 00153, 00154, 00155, 00156, 00157, 00158, 00159, 00160, 00161, 00162, 00163, 00164, 00165, 00166, 00167, 00168, 00169, 00170, 00171, 00172, 00173, 00174, 00175, 00176, 00177, 00178, 00179, 00180, 00181, 00182, 00183, 00184, 00185, 00186, 00187, 00188, 00189, 00190, 00191, 00192, 00193, 00194, 00195, 00196, 00197, 00198, 00199, 00200	Special Vehicle Designation	Trail Open to All Motorized Wheeled Vehicles with an 8" or Greater Wheel Base	Year-round			0133, 0136, 0901	Trails open to motorcycles with Seasonal Designation	Seasonal Designation	04/16-11/30
0086, 0091, 0094	Special Vehicle Designation	Trails open to vehicles 60" or less in width with 4 or more low pressure tires	Year-round						