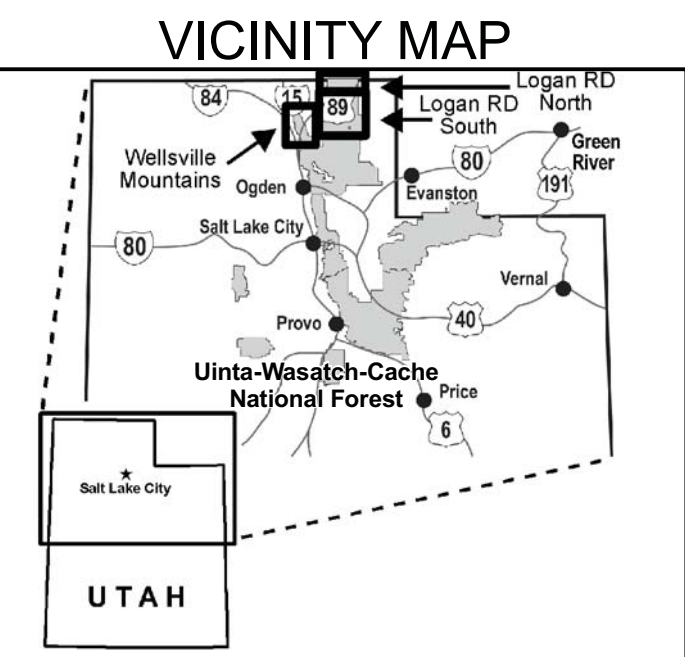


Motor Vehicle Use Map

Logan Ranger District
Uinta-Wasatch-Cache National Forest



INFORMATION SOURCES

Contact Information
<http://www.fs.fed.us/r4/uwcc/>

Uinta-Wasatch-Cache National Forest
 Salt Lake Supervisor's Office
 8236 Federal Building
 125 South State Street
 Salt Lake City, UT 84138
 (801) 236-3400

Logan Ranger District
 1500 East Highway 89
 Logan, UT 84321
 (435) 755-3620

EMERGENCY.....911
 Box Elder County Sheriff.....(435) 734-3800
 Cache County Sheriff.....(435) 716-9400
 Rich County Sheriff.....(435) 793-2285

To Report Fires.....911
 Poaching Hotline.....(800) 662-DEER (3337)

The U.S. Department of Agriculture (USDA) prohibits discrimination in all its programs and activities on the basis of race, color, national origin, age, disability, and where applicable, sex, marital status, familial status, parental status, religion, sexual orientation, genetic information, political beliefs, reprisal, or because all or part of an individual's income is derived from any public assistance program. (Not all prohibited bases apply to all programs.) Persons with disabilities who require alternative means for communication of program information (Braille, large print, audiotape, etc.) should contact USDA's TARGET Center at (202) 720-2600 (voice and TDD). To file a complaint of discrimination, write to USDA, Director, Office of Civil Rights, 1400 Independence Avenue, S.W., Washington, D.C. 20250-9410, or call (800) 795-3272 (voice) or (202) 720-6382 (TDD). USDA is an equal opportunity provider and employer.

PURPOSE AND CONTENTS OF THIS MAP

The designations shown on this motor vehicle use map are effective as of the date on the front cover and will remain in effect until superseded by the next year's motor vehicle use map. It is the responsibility of the user to acquire the current MVUM. This map shows the National Forest System roads, National Forest System trails, and the areas on National Forest System lands in the Uinta-Wasatch-Cache National Forest, Logan Ranger District that are designated for motor vehicle use pursuant to 36 Code of Federal Regulations (CFR) 212.51. This map also contains a list of those designated roads, trails, and areas; the types of vehicles that are allowed on each route and in each area; and any seasonal restrictions that apply on those routes and in those areas.

Designation of a road, trail, or area for motor vehicle use by a particular class of vehicle under 36 CFR 212.51 should not be interpreted as encouraging or inviting use or implying that the road, trail, or area is passable, actively maintained, or safe for travel. Motor vehicle designations include parking along designated routes and at facilities associated with designated routes when it is safe to do so and when not causing damage to National Forest System resources. Seasonal weather conditions and natural events may render designated roads and trails impassable for extended periods. Designated areas may contain dangerous or impassable terrain. Many designated roads and trails may be passable only by high-clearance vehicles or four-wheel-drive vehicles. Maintenance of designated roads and trails will depend on available resources, and many may receive little maintenance.

This motor vehicle use map identifies those roads, trails, and areas designated for the motor vehicle use under 36 CFR 212.51 for the purpose of enforcing the prohibition at 36 CFR 261.13. This is a limited purpose. The other public roads are shown for information and navigation purposes only and are not subject to designation under the Forest Service travel management regulation.

These designations apply only to National Forest System roads, National Forest System trails, and areas on National Forest System lands.

PROHIBITIONS

It is prohibited to possess or operate a motor vehicle on National Forest System lands on the Uinta-Wasatch-Cache National Forest, Logan Ranger District other than in accordance with these designations (36 CFR 261.13).

Violators of 36 CFR 261.13 are subject to a fine of up to \$5,000, imprisonment for up to 6 months or both (18 U.S.C. 3571(e)). This prohibition applies regardless of the presence or absence of signs.

This map does not display nonmotorized uses, over-snow uses, or other facilities and attractions on the Uinta-Wasatch-Cache National Forest, Logan Ranger District. Obtain forest visitor information from the local national forest office.

Designated roads, trails, and areas may also be subject to temporary, emergency closures. As a visitor, you must comply with signs notifying you of such restrictions. A national forest may issue an order to close a road, trail, or area on a temporary basis to protect the life, health or safety of forest visitors or the natural or cultural resources in these areas. Such a temporary and/or emergency closures are consistent with the Travel Management Rule (36 CFR 212.52 (b), 36 CFR 261 subpart B).

The designation "road or trail open to all motor vehicles" does not supersede State traffic law.

OPERATOR RESPONSIBILITIES

Operating a motor vehicle on National Forest System roads, National Forest System trails, and in areas on National Forest System lands carries a greater responsibility than operating that vehicle in a city or other developed setting. Not only must you know and follow all applicable traffic laws, you need to show concern for the environment as well as other forest users. The misuse of motor vehicles can lead to the temporary or permanent closure of any designated road, trail, or area. As a motor vehicle operator, you are also subject to State traffic law, including State requirements for licensing, registration, and operation of the vehicle in question.

Motor vehicle use, especially off-highway vehicle use, involves inherent risks that may cause property damage, serious injury, and possibly death to participants. Drive cautiously and anticipate rough surfaces and features, such as snow, mud, vegetation, and water crossings common to remote driving conditions. By your participation, you voluntarily assume full responsibility for these damages, risks, and dangers. Take care at all times to protect yourself and those under your responsibility.

Much of the Uinta-Wasatch-Cache National Forest, Logan Ranger District is remote. Medical assistance may not be readily available. Cellular telephones do not work in many areas of the Uinta-Wasatch-Cache National Forest, Logan Ranger District. Take adequate food, water, first-aid supplies, and other equipment appropriate for the conditions and expected weather.

ALWAYS REMEMBER TO RESPECT PRIVATE LAND! PROTECT YOUR PRIVILEGE. STAY ON DESIGNATED ROADS AND TRAILS AND IN DESIGNATED AREAS.

Read and understand this map in its entirety. If you have questions please contact the Uinta-Wasatch-Cache National Forest for clarification.

As a motor vehicle operator on a National Forest System road, trail, or area, you must comply with this map, as well as all Federal, State, and local laws and regulations. Compliance with these rules is your responsibility.

Road Number	Distance / Side of Road	Vehicle Type	Dates Allowed		
005	042 083 147 173 182 248	Same as permitted on road	Same as permitted on road		
007	047 090 148 173-A 211 251				
008	049 094 149 174 231 252				
012	050 097 150 174-A 238 254				
018	052 105 151 174-B 239 255				
020	052-A 106 152 174-C 240 256				
022	053 125 153 175 240-A 271				
023	054 126 160 176 244 272				
024	055 137 163 177 245 274				
024-A	056 146 168 178 246 338				
039	081 145-A 188-A 245-A				
Ogden Ranger District					
059	121 130 192 213 221 994				
060	124 144 212 216 714				

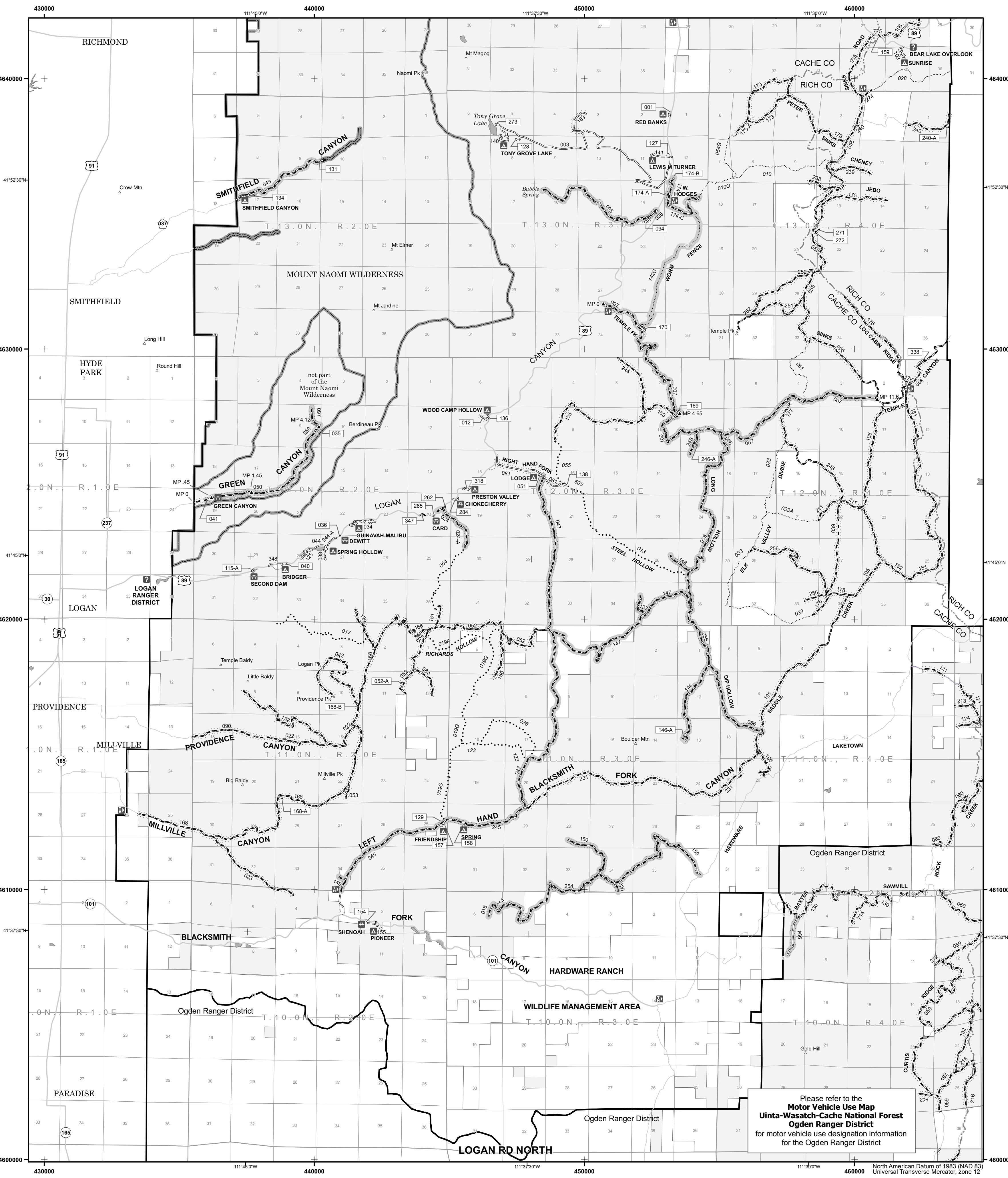
Legend

- Roads Open to Highway Legal Vehicles
- Roads Open to All Vehicles
- Trails Open to Wheeled Vehicles 50" or Less in Width
- Trails Open to Motorcycles Only
- Seasonal Designation (See Table)
- Dispersed Camping (See Table)
- Highways, U.S. State
- Other Public Roads
- Short Route Identifier
- ▲ Milepost Marker
- ▲ FS Campground
- ▲ Picnic Area
- ▲ Motorized Trailhead
- ▲ Information Site
- ▲ Peaks
- Forest or Unit Boundary
- National Forest System Lands
- Non-National Forest System Lands within the National Forest
- Wilderness Areas
- Political Boundary
- Township and Range Lines
- Section Lines
- Lakes and Rivers

1 0.5 0 1 Miles

Road Number	Route Designation	Length in Feet
011	Road Open to All Vehicles	1,886
012	Road Open to Highway Legal Vehicles	871
035	Road Open to All Vehicles	401
036	Road Open to Highway Legal Vehicles	121
040	Road Open to Highway Legal Vehicles	1,315
041	Road Open to All Vehicles	317
051	Road Open to Highway Legal Vehicles	1,056
052-A	Road Open to All Vehicles	528
054	Road Open to Highway Legal Vehicles	1,478
115-A	Road Open to Highway Legal Vehicles	317
127	Road Open to Highway Legal Vehicles	713
128	Road Open to Highway Legal Vehicles	1,315
129	Road Open to All Vehicles	343
131	Road Open to All Vehicles	206
134	Road Open to Highway Legal Vehicles	1,584
136	Road Open to Highway Legal Vehicles	1,494
138	Road Open to Highway Legal Vehicles	1,030
146-A	Road Open to All Vehicles	528
154	Road Open to Highway Legal Vehicles	385
157	Road Open to Highway Legal Vehicles	744
158	Road Open to Highway Legal Vehicles	180
159	Road Open to Highway Legal Vehicles	58
169-A	Road Open to All Vehicles	528
168-B	Road Open to All Vehicles	422
169	Road Open to All Vehicles	264
170	Road Open to Highway Legal Vehicles	2,323
174-A	Road Open to All Vehicles	449
174-B	Road Open to All Vehicles	739
240-A	Road Open to All Vehicles	528
245-A	Road Open to All Vehicles	185
262	Road Open to All Vehicles	1,056
271	Road Open to All Vehicles	903
272	Road Open to All Vehicles	1,056
273	Road Open to Highway Legal Vehicles	602
284	Road Open to Highway Legal Vehicles	744
285	Road Open to Highway Legal Vehicles	216
318	Road Open to Highway Legal Vehicles	1,188
338	Road Open to Highway Legal Vehicles	528
347	Road Open to All Vehicles	528

Road Number	Legend	Special Designation	Dates Allowed	Beginning Mile Post	Ending Mile Post
005	— Roads open to all Vehicles, with Seasonal Designation	Seasonal Designation	08/15-11/15	0.00	3.90
007	— Roads open to all Vehicles, with Seasonal Designation	Seasonal Designation	06/01-11/15	0.00	4.65
007	— Roads open to all Vehicles, with Seasonal Designation	Seasonal Designation	06/15-11/15	4.65	11.61
018	— Roads open to all Vehicles, with Seasonal Designation	Seasonal Designation	06/01-09/15	0.00	0.35
020	— Roads open to all Vehicles, with Seasonal Designation	Seasonal Designation	06/01-09/15	0.00	0.20
024	— Roads open to all Vehicles, with Seasonal Designation	Seasonal Designation	04/15-12/01	0.00	1.30
024-A	— Roads open to all Vehicles, with Seasonal Designation	Seasonal Designation	04/15-12/01	0.00	0.30
035	— Roads open to all Vehicles, with Seasonal Designation	Seasonal Designation	06/01-11/15	0.00	0.08
047	— Roads open to all Vehicles, with Seasonal Designation	Seasonal Designation	06/01-11/15	0.00	8.81
049	— Roads open to all Vehicles, with Seasonal Designation	Seasonal Designation	04/15-12/01	0.10	2.41
050	— Roads open to all Vehicles, with Seasonal Designation	Seasonal Designation	04/15-12/01	0.45	1.45
050	— Roads open to all Vehicles, with Seasonal Designation	Seasonal Designation	06/01-11/15	1.45	4.12
056	— Roads open to all Vehicles, with Seasonal Designation	Seasonal Designation	06/15-11/15	0.00	9.79
097	— Roads open to all Vehicles, with Seasonal Designation	Seasonal Designation	06/01-11/15	0.00	0.50
137	— Roads open to all Vehicles, with Seasonal Designation	Seasonal Designation	06/15-11/15	0.00	0.80
142G	— Trails open to Wheeled Vehicles 50" or less in width, with Seasonal Designation	Seasonal Designation	06/01-11/15	0.00	3.70
146	— Roads open to all Vehicles, with Seasonal Designation	Seasonal Designation	06/15-11/15	0.00	2.10
146-A	— Roads open to all Vehicles, with Seasonal Designation	Seasonal Designation	06/15-11/15	0.00	0.10
147	— Roads open to all Vehicles, with Seasonal Designation	Seasonal Designation	06/15-11/15	0.00	5.00
148	— Roads open to all Vehicles, with Seasonal Designation	Seasonal Designation	06/15-11/15	0.00	0.80
149	— Roads open to all Vehicles, with Seasonal Designation	Seasonal Designation	04/15-12/01	0.00	0.18
150	— Roads open to all Vehicles, with Seasonal Designation	Seasonal Designation	06/01-09/15	0.00	5.50
174	— Roads open to all Vehicles, with Seasonal Designation	Seasonal Designation	06/01-11/15	0.00	0.70
174-A	— Roads open to all Vehicles, with Seasonal Designation	Seasonal Designation	06/01-11/15	0.00	0.09
174-B	— Roads open to all Vehicles, with Seasonal Designation	Seasonal Designation	06/01-11/15	0.00	0.14
174-C	— Roads open to all Vehicles, with Seasonal Designation	Seasonal Designation	06/01-11/15	0.00	1.30
245	— Roads open to all Vehicles, with Seasonal Designation	Seasonal Designation	04/15-12/01	0.57	5.80
246	— Roads open to all Vehicles, with Seasonal Designation	Seasonal Designation	06/15-11/15	0.00	1.55
246-A	— Roads open to all Vehicles, with Seasonal Designation	Seasonal Designation	06/15-11/15	0.00	0.10
254	— Roads open to all Vehicles, with Seasonal Designation	Seasonal Designation	06/01-09/15	0.00	3.58
994	— Roads open to highway legal vehicles only, with Seasonal Designation	Seasonal Designation	06/16-11/14	0.00	1.10



Please refer to the Motor Vehicle Use Map Uinta-Wasatch-Cache National Forest Ogden Ranger District for motor vehicle use designation information for the Ogden Ranger District

Legend

- Roads Open to Highway Legal Vehicles
- Roads Open to All Vehicles
- Trails Open to Wheeled Vehicles 50" or Less in Width
- Trails Open to Motorcycles Only
- Seasonal Designation (See Table)
- Dispersed Camping (See Table)
- Interstate
- Highways, US, State
- Other Public Roads
- Short Route Identifier
- Milepost Marker
- FS Campground
- Picnic Area
- Motorized Trailhead
- Information Site
- Peaks
- Forest or Unit Boundary
- National Forest System Lands
- Non-National Forest System Lands within the National Forest
- Wilderness Areas
- Political Boundary
- Township and Range Lines
- Section Lines
- Lakes and Rivers

1 0.5 0 1 Miles

N

EXPLANATION OF LEGEND ITEMS

Roads Open to Highway Legal Vehicles Only:

These roads are open only to motor vehicles licensed under State law for general operation on all public roads within the state.

Roads Open to All Vehicles:

These roads are open to all motor vehicles, including smaller off-highway vehicles that may not be licensed for highway use (but not to oversize or overweight vehicles under State traffic law).

Trails Open to Wheeled Vehicles 50 inches or Less in Width:

These trails are open only to wheeled, motor vehicles less than 50 inches in width at the widest point on the vehicle.

Trails Open to Motorcycles Only:

These trails are open only to motorcycles. Sidecars are not permitted.

Seasonal Designation:

This symbol, used in conjunction with one of the other road or trail symbols, indicates that the road or trail is open only during certain portions of the year. Refer to Seasonal and Special Designation Table for further instructions.

Dispersed Camping:

This symbol is used along with a designated road or trail to indicate limited cross-country motor vehicle use within a specific distance of that route, solely for the purpose of dispersed camping. The dots indicate where this activity is permitted. They may be on the left, right, or both sides of the route. Refer to the Dispersed Camping Table for specifics.

Other Public Roads:

These symbols are used to show routes the Forest Service does not have jurisdiction over and has not designated for motorized use. These symbols are part of the reference layers showing connections to towns and cities outside the forest boundary.

Short Route Identifier:

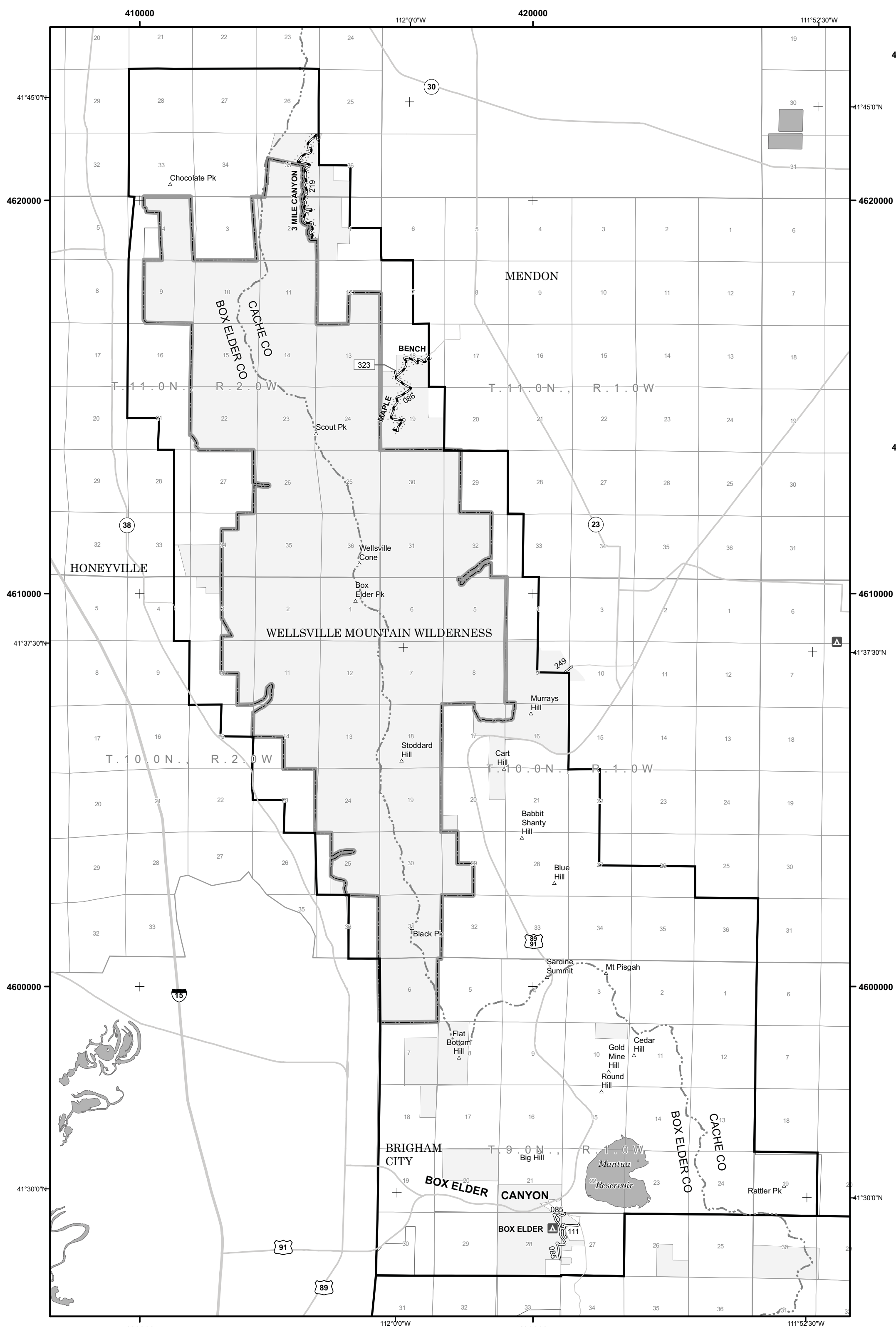
This symbol is used for routes that are too short to show an actual symbol type on the map. The symbol contains the road or trail number. Users should refer to the corresponding number in the Short Route Table for more information on the designated route.

Milepost Marker:

This symbol is used to display the beginning and ending mileposts of a road that has a change in the designation but not the symbology.

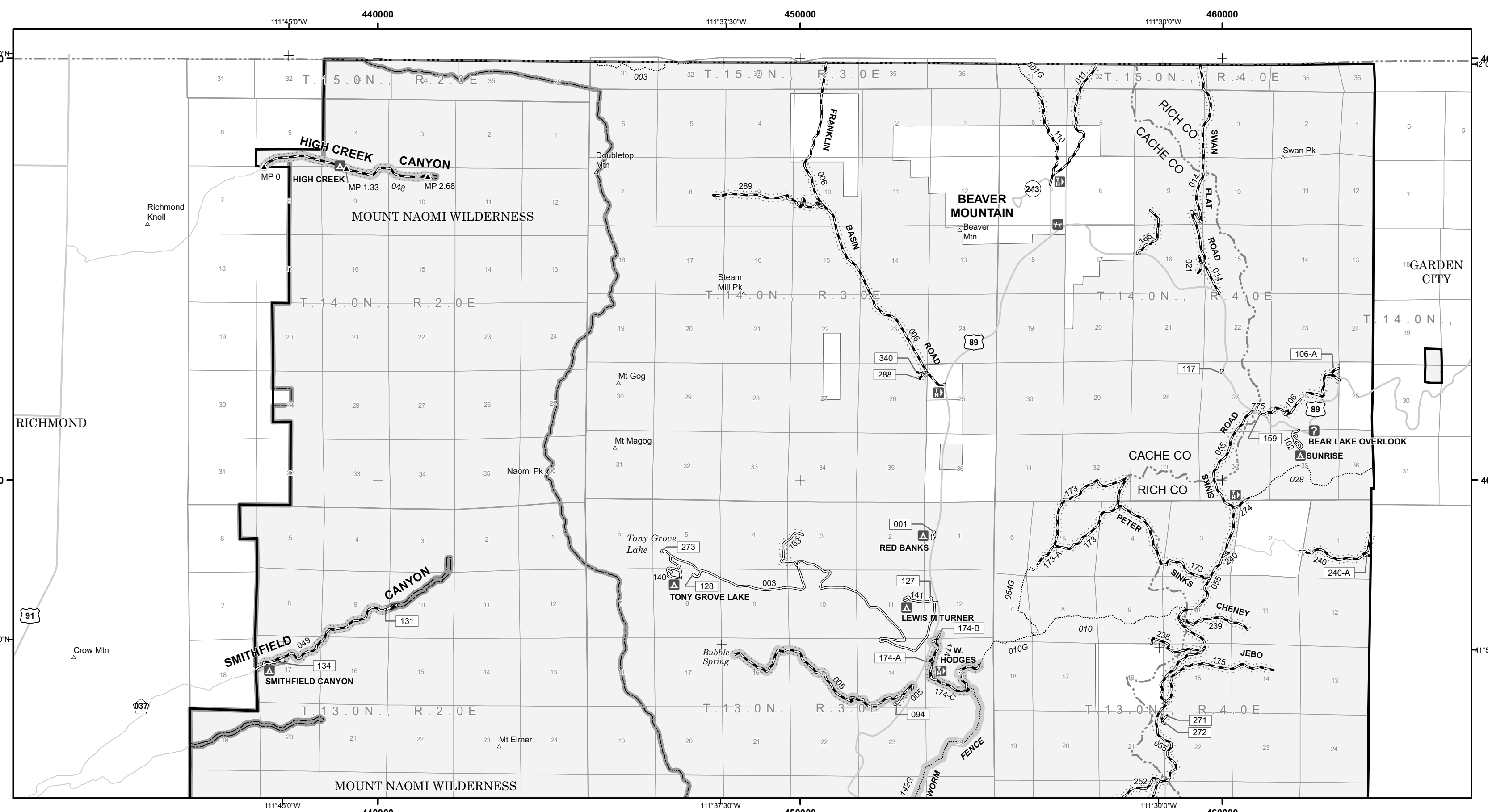
Motorized Trail Access:

This symbol indicates a trailhead for access to a motorized route. Not all motorized routes have trailheads and those that do may range from primitive to developed.



North American Datum of 1983 (NAD 83)
Universal Transverse Mercator, zone 12

WELLSVILLE MOUNTAINS



North American Datum of 1983 (NAD 83)
Universal Transverse Mercator, zone 12

LOGAN RD NORTH

Route Number	Legend	Special Vehicle Designation	Dates Allowed	Beginning Mile Post	Ending Mile Post
005	Roads open to all Vehicles, with Seasonal Designation	Seasonal Designation	06/15-11/15	0.00	3.90
048	Roads open to all Vehicles, with Seasonal Designation	Seasonal Designation	05/15-12/01	0.00	1.33
048	Roads open to all Vehicles, with Seasonal Designation	Seasonal Designation	06/01-11/15	1.33	2.68
049	Roads open to all Vehicles, with Seasonal Designation	Seasonal Designation	05/15-12/01	0.10	2.41
142G	Trails open to Wheeled Vehicles 50" or less in width, with Seasonal Designation	Seasonal Designation	06/01-11/15	0.00	3.70
174	Roads open to all Vehicles, with Seasonal Designation	Seasonal Designation	06/01-11/15	0.00	0.70
174-A	Roads open to all Vehicles, with Seasonal Designation	Seasonal Designation	06/01-11/15	0.00	0.09
174-B	Roads open to all Vehicles, with Seasonal Designation	Seasonal Designation	06/01-11/15	0.00	0.14
174-C	Roads open to all Vehicles, with Seasonal Designation	Seasonal Designation	06/01-11/15	0.00	1.30

Road Number		Distance / Side of Road	Vehicle Type	Dates Allowed
005	055	150 feet of center line of the road	Same as permitted on road	Same as permitted on road
006	086			
011	094	150 feet of center line of the road	Same as permitted on road	Same as permitted on road
014	106			
021	106-A	150 feet of center line of the road	Same as permitted on road	Same as permitted on road
048	110			
049	163	150 feet of center line of the road	Same as permitted on road	Same as permitted on road
	174-C			

Road Number	Route Designation	Length in Feet
011	Road Open to Highway Legal Vehicles	206
021	Road Open to All Vehicles	1,584
021-A	Road Open to All Vehicles	58
094	Road Open to Highway Legal Vehicles	602
106-A	Road Open to All Vehicles	422
117	Road Open to Highway Legal Vehicles	713
127	Road Open to Highway Legal Vehicles	1,478
128	Road Open to Highway Legal Vehicles	903
131	Road Open to Highway Legal Vehicles	1,056
134	Road Open to Highway Legal Vehicles	449
159	Road Open to Highway Legal Vehicles	739
174-A	Road Open to All Vehicles	528
174-B	Road Open to All Vehicles	752
240-A	Road Open to All Vehicles	792
271	Road Open to All Vehicles	1,896
272	Road Open to All Vehicles	966
273	Road Open to Highway Legal Vehicles	1,056
286	Road Open to All Vehicles	528
323	Road Open to All Vehicles	370
340	Road Open to All Vehicles	1,056