

United States Department of Agriculture

Forest Service

2019

Utah

America's Great Outdoors

Motor Vehicle Use Map

Spanish Fork Ranger District, Uinta-Wasatch-Cache National Forest

VICINITY MAP

INFORMATION SOURCES

Contact Information

<http://www.fs.fed.us/r4/uwc/>

Uinta-Wasatch-Cache National Forest Supervisor's Office

857 West South Jordan Parkway

South Jordan, UT 84095

(801) 999-2103

Spanish Fork Ranger District

44 West 400 North

Spanish Fork, UT 84660

(801) 798-3571

EMERGENCY.....911

To Report Fires.....911

Utah County Sheriff.....(801) 854-4000

Wasatch County Sheriff.....(435) 654-1411

Juab County Sheriff.....(435) 623-1349

Tooele County Sheriff.....(435) 882-5600

Poaching Hotline... (800) 662-DEER (3337)

treadlightly!

LEAVING A GOOD IMPRESSION

The U.S. Department of Agriculture (USDA) prohibits discrimination in all its programs and activities on the basis of race, color, national origin, age, disability, and where applicable, sex, marital status, familial status, parental status, religion, sexual orientation, genetic information, political beliefs, reprisal, or because all or part of an individual's income is derived from any public assistance program. (Not all prohibited bases apply to all programs.) Persons with disabilities who require alternative means for communication of program information (Braille, large print, audiotape, etc.) should contact USDA's TARGET Center at (202) 720-2600 (voice and TDD). To file a complaint of discrimination, write to USDA, Director, Office of Civil Rights, 1400 Independence Avenue, S.W., Washington, D.C. 20250-9410, or call (800) 795-3272 (voice) or (202) 720-6382

Legend

Roads Open to Highway Legal Vehicles

Roads Open to all Vehicles

Trails Open to all Vehicles

Trails Open to Vehicles 50" or Less in Width

Trails Open to Motorcycles Only

Special Designation (See Table)

Seasonal Designation (See Table)

Dispersed Camping, Both Sides

Dispersed Camping, Left Side

Dispersed Camping, Right Side

(See Table for DC information)

Interstate

Highways, U.S. State, County

Other Public Roads

Other Public Trails

Short Route Identifier

Milepost Marker

FS Campgrounds

Picnic Area

Motorized Trailhead

Information Site

Peaks

Forest Boundary

National Forest System Lands

Non-National Forest System Lands within the National Forest

Wilderness Areas

Political Boundary

Township and Range Lines

Section Lines

Large Lakes and Rivers

0 0.5 1 2 3 4 Miles

N

EXPLANATION OF LEGEND ITEMS

Roads Open to Highway Legal Vehicles Only:

Roads open only to motor vehicles licenced under State law for general operation on all public roads.

Roads Open to All Vehicles:

Roads open to all motor vehicles, including smaller off highway vehicles that may not be licensed for highway use (not to oversize or overweight vehicles under State traffic law).

Trails Open to All Vehicles:

=====

Trails open to all motor vehicles, including both highway legal and nonhighway legal vehicles.

Trails Open to Vehicles 50" or Less in Width:

Trails open only to motor vehicles less than 50 inches in width at the widest point on the vehicle.

Trails Open to Wheeled Vehicles 50" or Less in Width:

These trails are open open to wheeled, motor vehicles less than 50" in width at the widest point on the vehicle.

Trails Open to Motorcycles Only:

Trails open only to motorcycles. Sidecars are not permitted.

Special Vehicle Designation:

Indicates the road or trail is open to classes of vehicles other than those listed above. Refer to the Seasonal and Special Designation Table for further instructions.

Seasonal Designation:

This symbol, used in conjunction with one of the other road or trail symbols, indicates that the road or trail is open only during certain portions of the year. Refer to Seasonal and Special Designation Table for further instructions.

Dispersed Camping:

Dispersed Camping, Both Sides

Dispersed Camping, Left Side

Dispersed Camping, Right Side

Used along with a designated road or trail to indicate limited cross-country motor vehicle use within a specific distance of that route, solely for the purpose of dispersed camping and. Refer to the Dispersed Camping Table for specifics.

Other Public Roads and Trails:

Interstate

Highways, U.S., State, County

Other Public Roads

Other Public Trails

Used to show routes not designated for motorized use by the Forest Service. Part of the reference layers showing connections to towns and cities outside the forest boundary.

Short Route Identifier:

70333

Used for roads that are too short to show an actual symbol type on the map. The symbol with the arrow pointing away from the road will direct the user to a table that contains a corresponding road number for more information.

Milepost Marker:

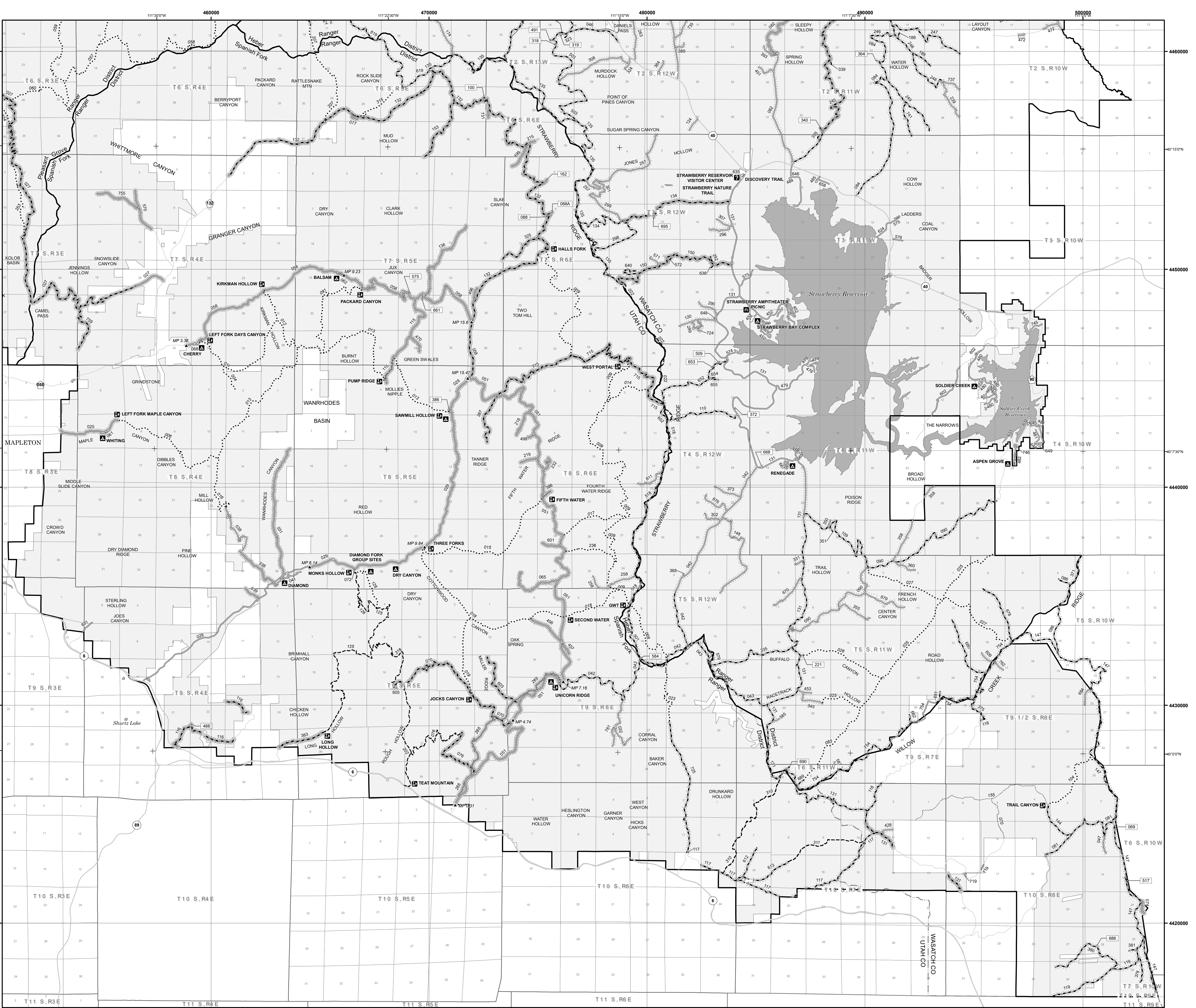
▲

Used to display the beginning and ending mileposts of a road that has a change in the designation but not the symbology.

Motorized Trail Access:

MT

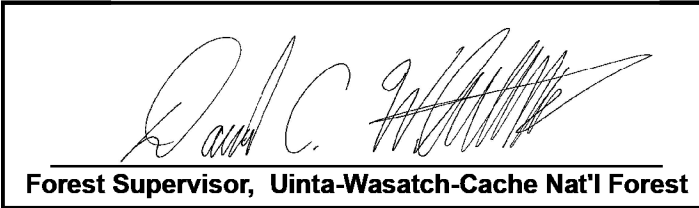
This symbol indicates a trail head for access to a motorized route. Not all motorized routes have trail heads and those that do may range from primitive to developed.



Spanish Fork

PURPOSE AND CONTENTS
OF THIS MAP

The designations shown on this motor vehicle use map (MVUM) were made by the responsible official pursuant to 36 CFR 212.51; are effective as of the date on the front cover of this MVUM; and will remain in effect until superseded by next year's MVUM.



It is the responsibility of the user to acquire the current MVUM. This map shows the National Forest System roads, National Forest System trails, and the areas on National Forest System lands in the Uinta-Wasatch-Cache National Forest, Spanish Fork Ranger District that are designated for motor vehicle use pursuant to 36 Code of Federal Regulations (CFR) 212.51. This MVUM also identifies the vehicle classes allowed on each route and in each area; and any seasonal restrictions that apply on those routes and in those areas.

Designation of a road, trail, or area for motor vehicle use by a particular class of vehicle under 36 CFR 212.51 should not be interpreted as encouraging or inviting use or implying that the road, trail, or area is passable, actively maintained, or safe for travel. Motor vehicle designations include parking along designated routes and at facilities associated with designated routes when it is safe to do so and when not causing damage to National Forest System resources. Seasonal weather conditions and natural events may render designated roads and trails impassable for extended periods. Designated areas may contain dangerous or impassable terrain. Many designated roads and trails may be passable only by high-clearance vehicles or four-wheel-drive vehicles. Maintenance of designated roads and trails will depend on available resources, and many may receive little maintenance.

This motor vehicle use map identifies those roads, trails, and areas designated for the motor vehicle use under 36 CFR 212.51 for the purpose of enforcing the prohibition at 36 CFR 261.13. This is a limited purpose. The other public roads are shown for information and navigation purposes only and are not subject to designation under the Forest Service travel management regulation.

These designations apply only to National Forest System roads, National Forest System trails, and areas on National Forest System lands.

PROHIBITIONS

It is prohibited to possess or operate a motor vehicle on National Forest System lands on the Uinta-Wasatch-Cache National Forest, Spanish Fork Ranger District other than in accordance with these designations (36 CFR 261.13).

Violators of 36 CFR 261.13 are subject to a fine of up to \$5,000, imprisonment for up to 6 months, or both (18 U.S.C. 3571(e)). This prohibition applies regardless of the presence or absence of signs.

This map does not display nonmotorized uses, over-snow uses, or other facilities and attractions on the Uinta-Wasatch-Cache National Forest, Spanish Fork Ranger District. Obtain forest visitor information from the local national forest office.

Designated roads, trails, and areas may also be subject to temporary, emergency closures. As a visitor, you must comply with signs notifying you of such restrictions. A national forest may issue an order to close a road, trail, or area on a temporary basis to protect the life, health or safety of forest visitors or the natural or cultural resources in these areas. Such a temporary and/or emergency closures are consistent with the Travel Management Rule (36 CFR 212.52 (b), 36 CFR 261 subpart B).

The designation "road or trail open to all motor vehicles" does not supersede State traffic law.

OPERATOR RESPONSIBILITIES

Operating a motor vehicle on National Forest System roads, National Forest System trails, and in areas on National Forest System lands carries a greater responsibility than operating that vehicle in a city or other developed setting. Not only must you know and follow all applicable traffic laws, you need to show concern for the environment as well as other forest users. The misuse of motor vehicles can lead to the temporary or permanent closure of any designated road, trail, or area. As a motor vehicle operator, you are also subject to State traffic law, including State requirements for licensing, registration, and operation of the vehicle in question.

Motor vehicle use, especially off-highway vehicle use, involves inherent risks that may cause property damage, serious injury, and possibly death to participants. Drive cautiously and anticipate rough surfaces and features, such as snow, mud, vegetation, and water crossings common to remote driving conditions. By your participation, you voluntarily assume full responsibility for these damages, risks, and dangers. Take care at all times to protect yourself and those under your responsibility.

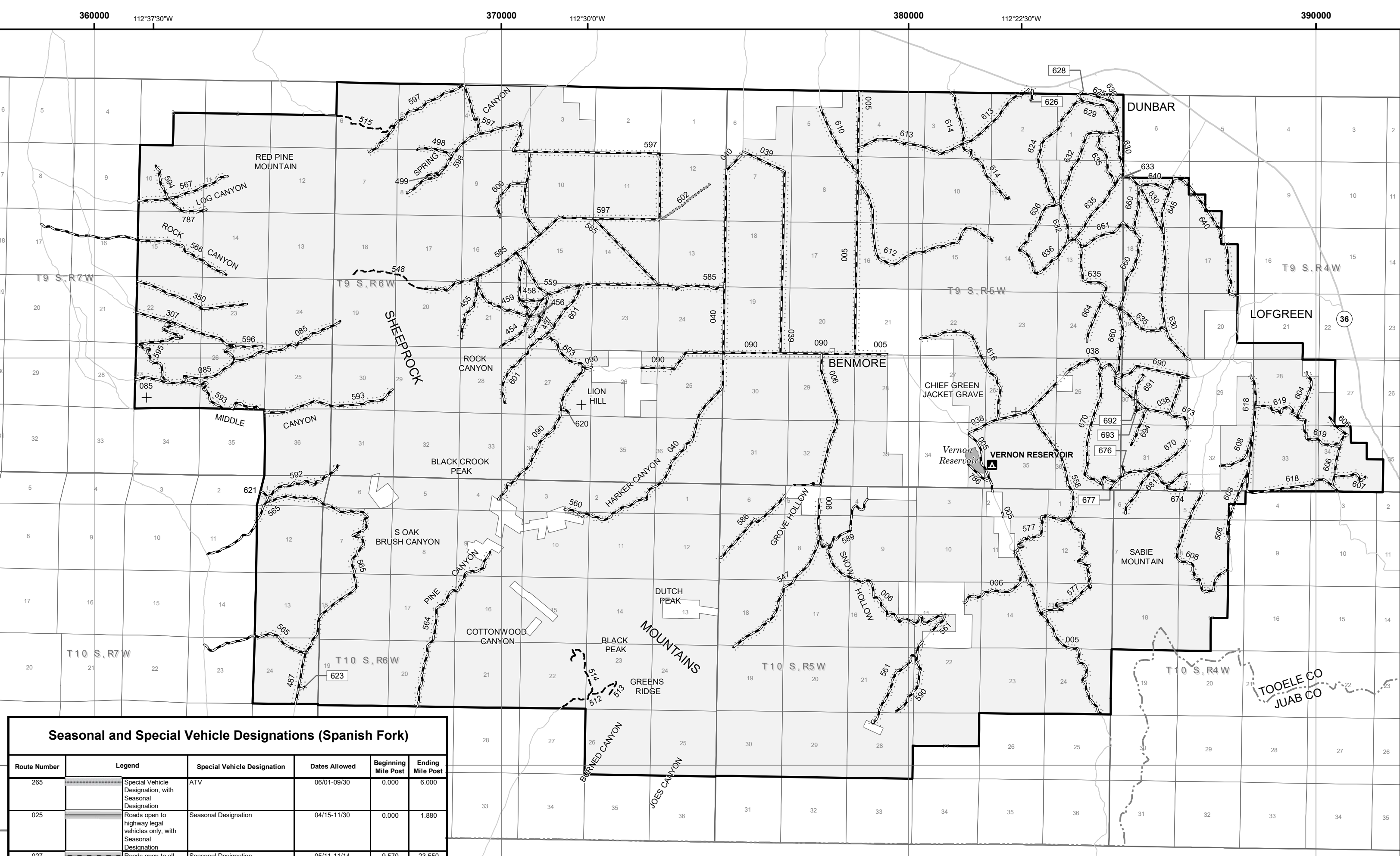
Much of the Uinta-Wasatch-Cache National Forest, Spanish Fork Ranger District is remote. Medical assistance may not be readily available. Cellular telephones do not work in many areas of the Uinta-Wasatch-Cache National Forest, Spanish Fork Ranger District. Take adequate food, water, first-aid supplies, and other equipment appropriate for the conditions and expected weather.




ALWAYS REMEMBER TO RESPECT PRIVATE LAND! PROTECT YOUR PRIVILEGE. STAY ON DESIGNATED ROADS AND TRAILS AND IN DESIGNATED AREAS.

Read and understand this map in its entirety. If you have questions please contact the Uinta-Wasatch-Cache National Forest, Spanish Fork Ranger District for clarification.

As a motor vehicle operator on a National Forest System road, trail, or area, you must comply with this map, as well as all Federal, State, and local laws and regulations. Compliance with these rules is your responsibility.

The U.S. Department of Agriculture (USDA) prohibits discrimination in all its programs and activities on the basis of race, color, national origin, age, disability, and where applicable, sex, marital status, familial status, parental status, religion, sexual orientation, genetic information, political beliefs, reprisal, or because all or part of an individual's income is derived from any public assistance program. (Not all prohibited bases apply to all programs.) Persons with disabilities who require alternative means for communication of program information (Braille, large print, audiotape, etc.) should contact USDA's TARGET Center at (202) 720-2600 (voice and TDD). To file a complaint of discrimination, write to USDA, Director, Office of Civil Rights, 1400 Independence Avenue, S.W., Washington, D.C. 20250-9410, or call (800) 795-3272 (voice) or (202) 720-6382 (TDD). USDA is an equal opportunity provider and employer.

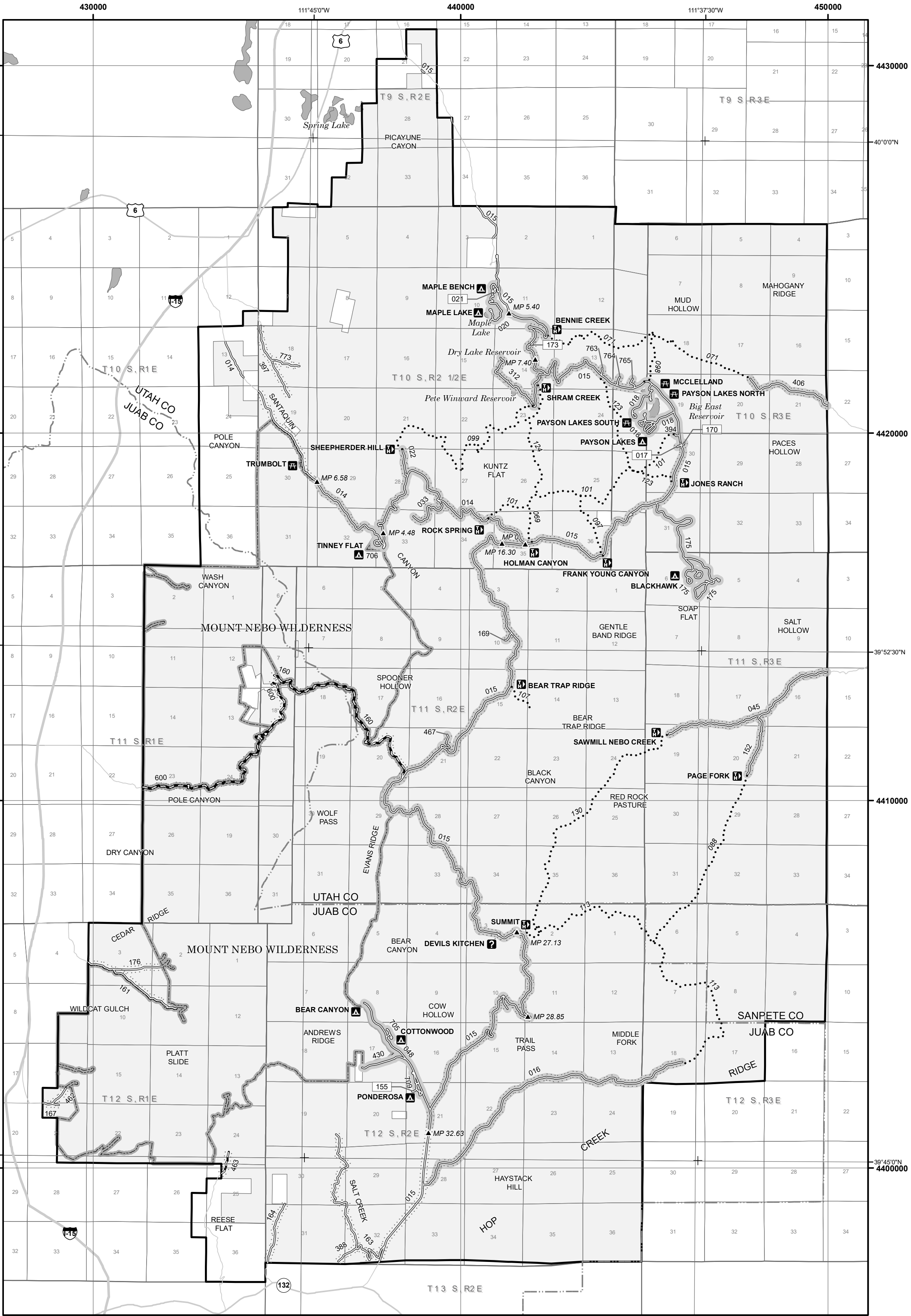


Seasonal and Special Vehicle Designations (Spanish Fork)						
Route Number	Legend	Special Vehicle Designation	Dates Allowed	Beginning Mile Post	Ending Mile Post	
255		Special Vehicle Designation, with Seasonal Designation	ATV	06/01-09/30	0.000	6.000
025		Seasonal Designation		04/15-11/30	0.000	1.860
027		Seasonal Designation		05/11-11/14	9.570	23.550

Roads Too Short to Be Seen Clearly on the Map		
Road Number	Route Destination	Length in Feet
017	Road Open to Highway Legal Vehicles	422
021	Road Open to Highway Legal Vehicles	1,088
067	Road Open to Highway Legal Vehicles	528
069	Road Open to All Vehicles	898
075	Road Open to Highway Legal Vehicles	317
088	Road Open to Highway Legal Vehicles	1,214
100	Road Open to All Vehicles	581
155	Road Open to Highway Legal Vehicles	475
159	Road Open to Highway Legal Vehicles	898
162	Road Open to Highway Legal Vehicles	686
170	Road Open to Highway Legal Vehicles	422
173	Road Open to Highway Legal Vehicles	739
188	Road Open to Highway Legal Vehicles	898
221	Road Open to Highway Legal Vehicles	528
318	Road Open to Highway Legal Vehicles	407
319	Road Open to Highway Legal Vehicles	412
339	Road Open to Highway Legal Vehicles	845
340	Road Open to Highway Legal Vehicles	1,056
351	Road Open to Highway Legal Vehicles	739
364	Road Open to All Vehicles	475
372	Road Open to Highway Legal Vehicles	528
386	Road Open to Highway Legal Vehicles	307
395	Road Open to Highway Legal Vehicles	739
488	Road Open to Highway Legal Vehicles	686
491	Road Open to All Vehicles	528
509	Road Open to Highway Legal Vehicles	422
517	Road Open to All Vehicles	264
572	Road Open to Highway Legal Vehicles	739
584	Road Open to Highway Legal Vehicles	686
591	Road Open to All Vehicles	950
623	Road Open to All Vehicles	686
626	Road Open to All Vehicles	1,162
628	Road Open to All Vehicles	396
635	Road Open to Highway Legal Vehicles	1,478
638	Road Open to Highway Legal Vehicles	1,003
648	Road Open to Highway Legal Vehicles	581
648	Road Open to Highway Legal Vehicles	581
649	Road Open to Highway Legal Vehicles	581
653	Road Open to All Vehicles	264
661	Road Open to Highway Legal Vehicles	739
668	Road Open to Highway Legal Vehicles	232
676	Road Open to All Vehicles	898
677	Road Open to All Vehicles	792
686	Road Open to Highway Legal Vehicles	422
690	Road Open to Highway Legal Vehicles	528
692	Road Open to All Vehicles	950
693	Road Open to All Vehicles	792
695	Road Open to Highway Legal Vehicles	528
724	Road Open to Highway Legal Vehicles	950
746	Road Open to Highway Legal Vehicles	898
088A	Road Open to Highway Legal Vehicles	264

Dispersed Camping (Vernon)						
Road Number		Distance/ Side of Road	Vehicle Type	Dates Allowed		
005	498	590	608	632	691	Same as permitted on the road
006	499	591	610	633	692	
038	518	592	612	635	693	
039	547	593	613	636	694	
040	558	594	614	640	695	
085	559	595	616	645	787	
090	560A	596	618	660		
307	561	597	619	661		
350	563	598	620	664		
454	564	599	621	670		
455	565	600	622	673		
456	566	601	623	674		
457	567	603	624	676		
458	577	604	626	677		
459	585	606	629	681		
487	586	607	630	690		

Seasonal and Special Vehicle Designations (Nebo)						
Route Number	Legend	Special Vehicle Designation	Dates Allowed	Beginning Mile Post	Ending Mile Post	
014		Roads open to highway legal vehicles only, with Seasonal Designation	Seasonal Designation	05/15-11/01	0.000	4.480
014		Roads open to highway legal vehicles only, with Seasonal Designation	Seasonal Designation	05/01-11/01	4.480	6.580
015		Roads open to highway legal vehicles only, with Seasonal Designation	Seasonal Designation	04/15-11/20	5.400	7.400
015		Roads open to highway legal vehicles only, with Seasonal Designation	Seasonal Designation	05/01-11/15	7.400	16.130
015		Roads open to highway legal vehicles only, with Seasonal Designation	Seasonal Designation	05/10-11/01	16.130	27.130
015		Roads open to highway legal vehicles only, with Seasonal Designation	Seasonal Designation	05/01-11/01	27.130	28.850
015		Roads open to highway legal vehicles only, with Seasonal Designation	Seasonal Designation	03/15-12/15	28.850	32.630
016, 048		Roads open to highway legal vehicles only, with Seasonal Designation	Seasonal Designation	05/01-11/15		
017, 018, 018A, 018B, 018C, 018D, 018E, 018F, 020, 170, 175, 175A, 175B, 175C, 175D, 312, 394, 430, 467, 469, 705, 705A, 709A, 709B, 763, 764, 765		Roads open to highway legal vehicles only, with Seasonal Designation	Seasonal Designation	06/01-11/20		
022, 033, 706		Roads open to highway legal vehicles only, with Seasonal Designation	Seasonal Designation	07/01-11/20		
045, 152, 406		Roads open to highway legal vehicles only, with Seasonal Designation	Seasonal Designation	05/01-11/01		
169		Roads open to highway legal vehicles only, with Seasonal Designation	Seasonal Designation	05/10-11/01	0.000	0.200



Dispersed Camping (Spanish Fork)						
Road Number		Distance/ Side of Road	Vehicle Type	Dates Allowed		
025	109	245	358	499	664	Same as permitted on the road
027	110	246	360	501	668	
027A	115	247	364	503	670	
029	116	248	368	504	676	
031	117	249	371	509	678	
032	118	257	373	517	679	
038	119	258	374	518	680	
039	120	263	375	570	681	
042	121	289	378	571	682	
043	124	290	380	572	684	
046	131	292	381	579	686	
047	132	296	383	584	688	
049	134	298	384	585	689	
051	135	299	386	587	690	
058	136	301	387	601	695	
063	137	302	389	602	715	
065	144	307	393	603	724	Same as permitted on the road
069	147	308	395	605	725	
070	148	318	398	609	731	
073	149	319	428	611	735	
074	150	323	451	612	737	
075	153	324	453	613	741	
076	159	325	456	619	754	
077	162	331	457	631	755	
081	188	335	470	638	759	
082	189	338	471	640	761	
084	215	339	472	648	762	
086	218	340	476	652		
088	219	345	488	653		
088A	221	350	491	654		
090	232	351	496	655		
100	239	355	498	661		

Dispersed Camping (Mt. Nebo)					
Road Number			Distance/ Side of Road	Vehicle Type	Dates Allowed
014	045	164	176	462	763
015	152	167	312	467	764
016	158	169	388	469	765
017	160	170	390	600	773
022	161	173	397	702	
033	163	175	406	708	