

United States Department of Agriculture

Forest Service

Utah

2019

America's Great Outdoors



National Forest

Cache

Uinta-Wasatch-

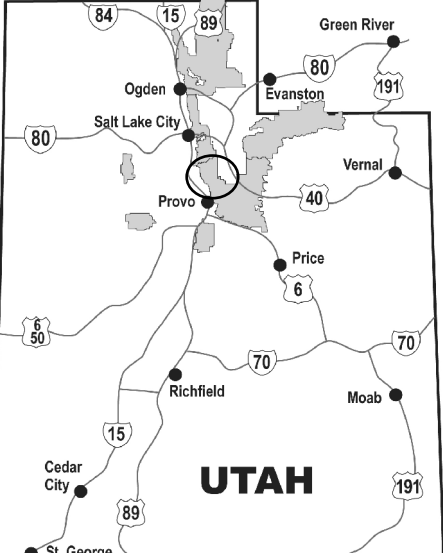
Ranger District,

Pleasant Grove

Use Map

Motor Vehicle

VICINITY MAP



INFORMATION SOURCES

Contact Information

<http://www.fs.fed.us/r4/uwcl/>

Uinta-Wasatch-Cache National Forest Supervisor's Office

857 West South Jordan Parkway

South Jordan, UT 84095

(801) 999-2103

Pleasant Grove Ranger District

390 North 100 East

Pleasant Grove, UT 84062

(801) 785-3563

EMERGENCY.....911

To Report Fires.....911

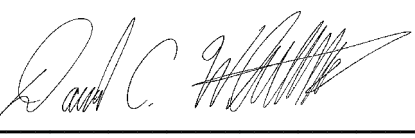
Utah County Sheriff..... (801) 854-4000

Poaching Hotline... (800) 662-DEER (3337)

PURPOSE AND CONTENTS

OF THIS MAP

The designations shown on this motor vehicle use map (MVUM) were made by the responsible official pursuant to 36 CFR 212.51; are effective as of the date on the front cover of this MVUM; and will remain in effect until superseded by next year's MVUM.



Forest Supervisor, Uinta-Wasatch-Cache Nat'l

It is the responsibility of the user to acquire the current MVUM. This map shows the National Forest System roads, National Forest System trails, and the areas on National Forest System lands in the Uinta-Wasatch-Cache National Forest, Pleasant Grove Ranger District that are designated for motor vehicle use pursuant to 36 Code of Federal Regulations (CFR) 212.51. This MVUM also identifies the vehicle classes allowed on each route and in each area; and any seasonal restrictions that apply on those routes and in those areas.

Designation of a road, trail, or area for motor vehicle use by a particular class of vehicle under 36 CFR 212.51 should not be interpreted as encouraging or inviting use or implying that the road, trail, or area is passable, actively maintained, or safe for travel. Motor vehicle designations include parking along designated routes and at facilities associated with designated routes when it is safe to do so and when not causing damage to National Forest System resources. Seasonal weather conditions and natural events may render designated roads and trails impassable for extended periods. Designated areas may contain dangerous or impassable terrain. Many designated roads and trails may be passable only by high-clearance vehicles or four-wheel-drive vehicles. Maintenance of designated roads and trails will depend on available resources, and many may receive little maintenance.

This motor vehicle use map identifies those roads, trails, and areas designated for the motor vehicle use under 36 CFR 212.51 for the purpose of enforcing the prohibition at 36 CFR 261.13. This is a limited purpose. The other public roads are shown for information and navigation purposes only and are not subject to designation under the Forest Service travel management regulation.

These designations apply only to National Forest System roads, National Forest System trails, and areas on National Forest System lands.

PROHIBITIONS

It is prohibited to possess or operate a motor vehicle on National Forest System lands on the Uinta-Wasatch-Cache National Forest, Pleasant Grove Ranger District other than in accordance with these designations (36 CFR 261.13).

Violators of 36 CFR 261.13 are subject to a fine of up to \$5,000, imprisonment for up to 6 months, or both (18 U.S.C. 3571(e)). This prohibition applies regardless of the presence or absence of signs.

This map does not display nonmotorized uses, over-snow uses, or other facilities and attractions on the Uinta-Wasatch-Cache National Forest, Pleasant Grove Ranger District. Obtain forest visitor information from the local national forest office.

Designated roads, trails, and areas may also be subject to temporary, emergency closures. As a visitor, you must comply with signs notifying you of such restrictions. A national forest may issue an order to close a road, trail, or area on a temporary basis to protect the life, health or safety of forest visitors or the natural or cultural resources in these areas. Such a temporary and/or emergency closures are consistent with the Travel Management Rule (36 CFR 212.52 (b), 36 CFR 261 subpart B).

The designation "road or trail open to all motor vehicles" does not supersede State traffic law.

OPERATOR RESPONSIBILITIES

Operating a motor vehicle on National Forest System roads, National Forest System trails, and in areas on National Forest System lands carries a greater responsibility than operating that vehicle in a city or other developed setting. Not only must you know and follow all applicable traffic laws, you need to show concern for the environment as well as other forest users. The misuse of motor vehicles can lead to the temporary or permanent closure of any designated road, trail, or area. As a motor vehicle operator, you are also subject to State traffic law, including State requirements for licensing, registration, and operation of the vehicle in question.

Motor vehicle use, especially off-highway vehicle use, involves inherent risks that may cause property damage, serious injury, and possibly death to participants. Drive cautiously and anticipate rough surfaces and features, such as snow, mud, vegetation, and water crossings common to remote driving conditions. By your participation, you voluntarily assume full responsibility for these damages, risks, and dangers. Take care at all times to protect yourself and those under your responsibility.

Much of the Uinta-Wasatch-Cache National Forest, Pleasant Grove Ranger District is remote. Medical assistance may not be readily available. Cellular telephones do not work in many areas of the Uinta-Wasatch-Cache National Forest, Pleasant Grove Ranger District. Take adequate food, water, first-aid supplies, and other equipment appropriate for the conditions and expected weather.

ALWAYS REMEMBER TO RESPECT PRIVATE LAND! PROTECT YOUR PRIVILEGE. STAY ON DESIGNATED ROADS AND TRAILS AND IN DESIGNATED AREAS.

Read and understand this map in its entirety. If you have questions please contact the Uinta-Wasatch-Cache National Forest, Pleasant Grove Ranger District for clarification.

As a motor vehicle operator on a National Forest System road, trail, or area, you must comply with this map, as well as all Federal, State, and local laws and regulations. Compliance with these rules is your responsibility.

The U.S. Department of Agriculture (USDA) prohibits discrimination in all its programs and activities on the basis of race, color, national origin, age, disability, and where applicable, sex, marital status, familial status, parental status, religion, sexual orientation, genetic information, political beliefs, reprisal, or because all or part of an individual's income is derived from any public assistance program. (Not all prohibited bases apply to all programs.) Persons with disabilities who require alternative means for communication of program information (Braille, large print, audiotape, etc.) should contact USDA's TARGET Center at (202) 720-2600 (voice and TDD). To file a complaint of discrimination, write to USDA, Director, Office of Civil Rights, 1400 Independence Avenue, S.W., Washington, D.C. 20250-9410, or call (800) 795-3272 (voice) or (202) 720-6382 (TDD). USDA is an equal opportunity provider and employer.

EXPLANATION OF LEGEND ITEMS

Roads Open to Highway Legal Vehicles Only:

Roads open only to motor vehicles licensed under State law for general operation on all public roads.

Roads Open to All Vehicles:

Roads open to all motor vehicles, including smaller off highway vehicles that may not be licensed for highway use (not to oversize or overweight vehicles under State traffic law).

Trails Open to All Vehicles:

Trails open to all motor vehicles, including both highway legal and nonhighway legal vehicles.

Trails Open to Vehicles 50" or Less in Width:

Trails open only to motor vehicles less than 50 inches in width at the widest point on the vehicle.

Trails Open to Wheeled Vehicles 50" or Less in Width:

These trails are open to wheeled, motor vehicles less than 50" in width at the widest point on the vehicle.

Trails Open to Motorcycles Only:

Trails open only to motorcycles. Sidecars are not permitted.

Special Vehicle Designation:

Indicates the road or trail is open to classes of vehicles other than those listed above. Refer to the Seasonal and Special Designation Table for further instructions.

Seasonal Designation:

This symbol, used in conjunction with one of the other road or trail symbols, indicates that the road or trail is open only during certain portions of the year. Refer to Seasonal and Special Designation Table for further instructions.

Dispersed Camping:

Used along with a designated road or trail to indicate limited cross-country motor vehicle use within a specific distance of that route, solely for the purpose of dispersed camping. Refer to the Dispersed Camping Table for specifics.

Other Public Roads and Trails:

Interstate

Highways, U.S., State, County

Other Public Roads

Other Public Trails

Used to show routes not designated for motorized use by the Forest Service. Part of the reference layers showing connections to towns and cities outside the forest boundary.

Short Route Identifier:

70333


Used for roads that are too short to show an actual symbol type on the map. The symbol with the arrow pointing away from the road will direct the user to a table that contains a corresponding road number for more information.

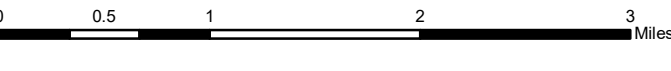
Motorized Trail Access:

This symbol indicates a trail head for access to a motorized route. Not all motorized routes have trail heads and those that do may range from primitive to developed.

Legend

- Roads Open to Highway Legal Vehicles
- Roads Open to all Vehicles
- Trails Open to all Vehicles
- Trails Open to Vehicles 50" or Less in Width
- Trails Open to Wheeled Vehicles 50" or Less in Width
- Trails Open to Motorcycles Only
- Special Designation (See Table)
- Seasonal Designation (See Table)
- Dispersed Camping, Both Sides
- Dispersed Camping, Left Side
- Dispersed Camping, Right Side (See table for DC information)
- Interstate
- Highways, US, State, County
- Other Public Roads
- Other Public Trails
- Short Route Identifier
- FS Campgrounds
- Picnic Area
- Motorized Trailhead
- Information Site
- Peaks
- Forest Boundary
- National Forest System Lands
- Non-National Forest System Lands within the National Forest
- Wilderness Areas
- Political Boundary
- Township and Range Lines
- Section Lines
- Large Lakes and Rivers

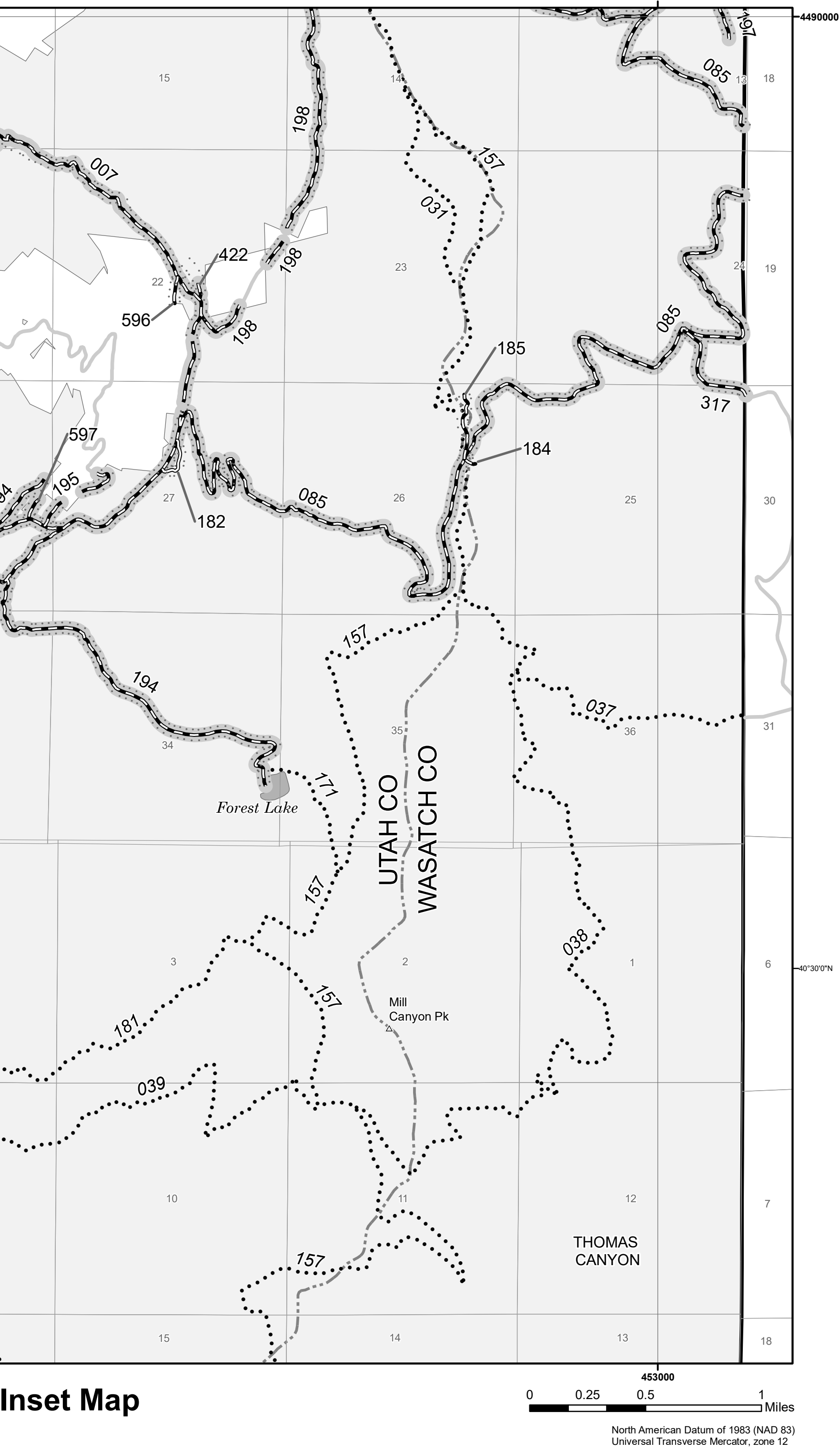




Roads Too Short to Be Seen Clearly on the Map		
Road Number	Route Designation	Length in Feet
001	Road Open to Highway Legal Vehicles	53
001A	Road Open to Highway Legal Vehicles	164
002	Road Open to Highway Legal Vehicles	53
004	Road Open to Highway Legal Vehicles	53
005	Road Open to Highway Legal Vehicles	53
057	Road Open to Highway Legal Vehicles	1,056
105	Road Open to Highway Legal Vehicles	528
138	Road Open to Highway Legal Vehicles	528
178	Road Open to Highway Legal Vehicles	581
179	Road Open to All Vehicles	533
184	Road Open to All Vehicles	264
186	Road Open to All Vehicles	792
211	Road Open to Highway Legal Vehicles	528
216	Road Open to Highway Legal Vehicles	1,056
220	Road Open to Highway Legal Vehicles	528
271	Road Open to Highway Legal Vehicles	195
597	Road Open to All Vehicles	528

Seasonal and Special Vehicle Designations					
Route Number	Legend	Special Vehicle Designation	Dates Allowed	Beginning Mile Post	Ending Mile Post
001, 001A	Special Vehicle Designation		01/01-12/31		
007, 008, 011, 179, 186, 191, 194, 197, 295, 317, 420, 421, 422, 594, 597	Roads open to all Vehicles, with Seasonal Designation	Seasonal Designation	04/01-11/30		
010	Roads open to all Vehicles, with Seasonal Designation	Seasonal Designation	04/01-11/30	0.000	0.720
010	Roads open to highway legal vehicles only, with Seasonal Designation	Seasonal Designation	05/11-11/14	0.720	1.020
027	Roads open to highway legal vehicles only, with Seasonal Designation	Seasonal Designation	04/02-10/30	1.560	4.550
027	Roads open to all Vehicles, with Seasonal Designation	Seasonal Designation	05/11-11/14	4.550	23.550
028, 221, 270	Roads open to highway legal vehicles only, with Seasonal Designation	Seasonal Designation	06/15-11/01		
010A, 010B, 010C, 010D, 010GC, 027, 098, 098A, 200, 200A, 403, 403A, 403B, 403C	Roads open to highway legal vehicles only, with Seasonal Designation	Seasonal Designation	05/11-11/14		
053, 053A, 053D, 053E, 056, 102, 105, 180, 183, 196, 210, 211, 214, 217, 220, 321, 416, 593, 720, 721, 749	Roads open to highway legal vehicles only, with Seasonal Designation	Seasonal Designation	05/01-10/31		
058	Roads open to highway legal vehicles only, with Seasonal Designation	Seasonal Designation	04/20-11/30	3.360	9.235
085	Roads open to all Vehicles, with Seasonal Designation	Seasonal Designation	04/01-11/30	0.000	14.148

Seasonal and Special Vehicle Designations					
Route Number	Legend	Special Vehicle Designation	Dates Allowed	Beginning Mile Post	Ending Mile Post
111	Roads open to all Vehicles, with Seasonal Designation	Seasonal Designation	04/01-11/30	0.000	2.414
114, 140, 140A, 140E	Roads open to highway legal vehicles only, with Seasonal Designation	Seasonal Designation	05/11-10/31		
132	Roads open to all Vehicles, with Seasonal Designation	Seasonal Designation	07/01-11/30	6.100	23.900
178, 570, 685, 755	Roads open to highway legal vehicles only, with Seasonal Designation	Seasonal Designation	04/01-11/30		
193	Special Vehicle Designation, with Seasonal Designation	High Clearance Vehicles	04/01-11/30	0.000	3.226
195	Roads open to all Vehicles, with Seasonal Designation	Seasonal Designation	04/01-11/30	0.000	0.430
198	Roads open to all Vehicles, with Seasonal Designation	Seasonal Designation	04/01-11/30	0.000	2.070
199	Roads open to highway legal vehicles only, with Seasonal Designation	Seasonal Designation	04/02-10/30	0.000	0.344
241	Roads open to highway legal vehicles only, with Seasonal Designation	Seasonal Designation	04/01-12/01	0.000	0.150
320	Roads open to highway legal vehicles only, with Seasonal Designation	Seasonal Designation	04/01-11/30	0.540	0.870
586	Roads open to all Vehicles, with Seasonal Designation	Seasonal Designation	04/01-11/30	0.000	1.597
759	Roads open to all Vehicles, with Seasonal Designation	Seasonal Designation	05/11-11/14	0.000	1.620



Inset Map

Dispersed Camping					Distance/ Side of Road	Vehicle Type	Dates Allowed
Road Number							
005	179	198	322	570	150 feet off center line of the road	Same as permitted on the road	Same as permitted on the road
007	180	199	403	586			
008	182	210	403A	590			
011	184	211	403B	593			
027	185	214	403C	594			
056	186	216	416	596			
085	191	217	420	597			
099	193	220	421	720			
101	194	295	422	755			
102	195	317	474	759			
111	196	320	475				
114	197	321	475A				

*Motor vehicle use off of designated ROADS for the purpose of dispersed camping is permitted for up to 150 feet from the centerline of the ROADS listed in the table.

