

The area depicted on this map is the Idaho Department of Lands (IDL)

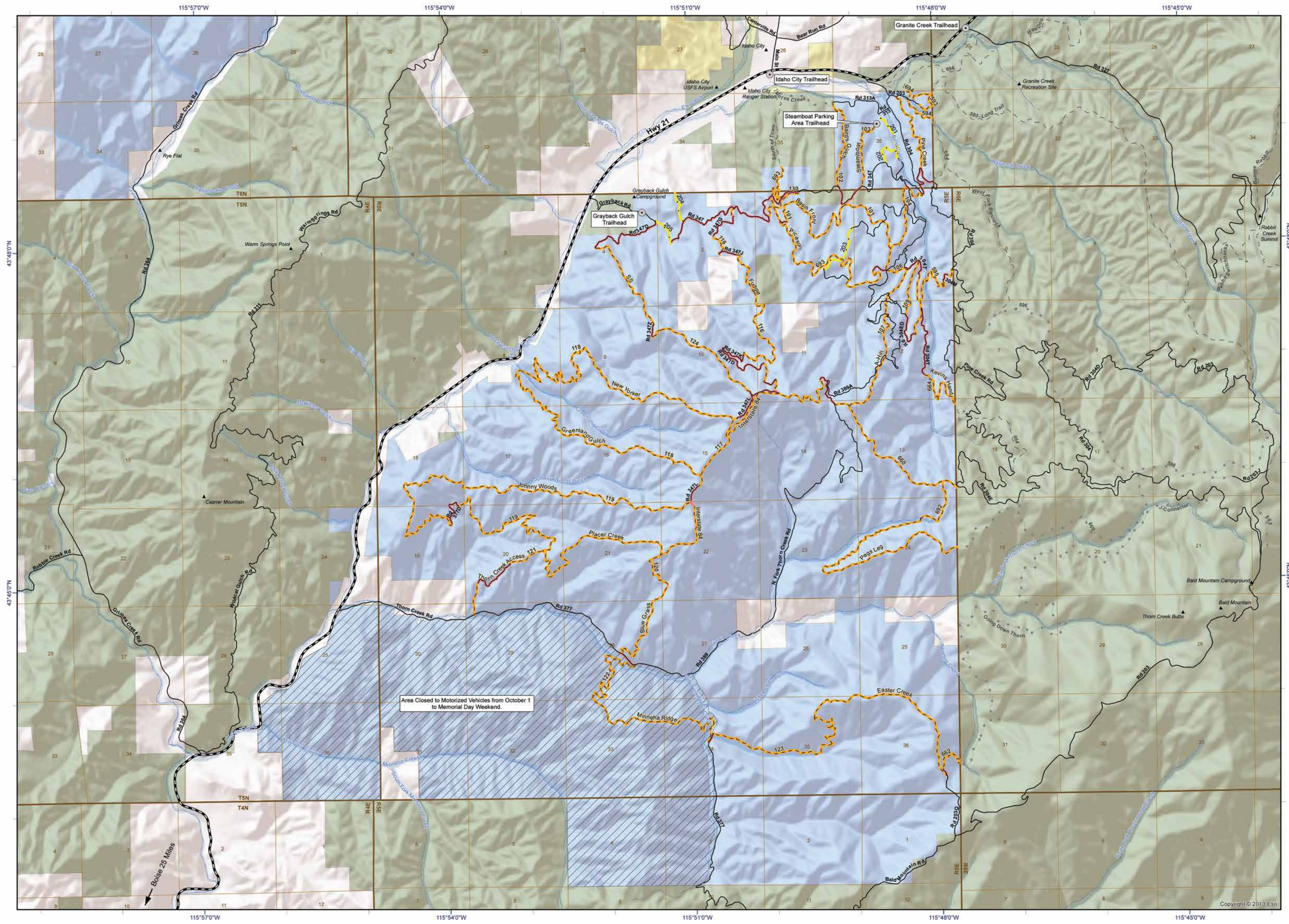
Thorn Creek Management Area

Thorn Creek OHV Area
 Motorized wheeled vehicle travel allowed on designated routes only.

- Trailhead Kiosks
- Roads
- State Trails**
 - OHM Only
 - OHM/ATV
 - Trail Connecting Roads
- Forest Service Trails**
 - OHM Only
 - OHM/ATV
- Closure Area**
 - Closed to Motorized Vehicles from October 1 to Memorial Day Weekend
- Land Status**
 - Bureau of Land Management
 - Private Land
 - State Land
 - Forest Service
- OHM Off Highway Motorcycle***
ATV All Terrain Vehicle*
 * See Idaho Code for specific definitions

TRAIL SIGNS
 Trails designated for motorized wheeled vehicle travel within the Thorn Creek OHV Area are clearly signed. At the beginning of each designated trail and at every trail intersection you will find a marker clearly identifying the trail as designated for motorized use, the type of OHV allowed on the trail and the trail number.

- Designated trail route. Motorized wheeled vehicle travel is prohibited on any route that is not designated by a white arrow.
- Trails designated for and open to Off-Highway Motorcycles are signed with the universal motorcycle symbol. All designated trails are open to OHMs.
- Trails designated for and open to All-Terrain Vehicles are signed with the universal ATM symbol. Only trails signed with an ATV symbol and roads are open to ATV travel.



0 0.5 1 2 Miles

Mapped by:
 R. Dunn
 SW Idaho Department of Lands
 October 2013

