

LEGEND

- Roads Open to Highway Legal Vehicles Only
- Roads Open to All Vehicles
- Trails Open to All Vehicles
- Trails Open to Motorcycles Only
- Other Public Roads
- Other Public Trails
- Forest or Unit Boundary
- Non-National Forest System Lands within this National Forest
- Wilderness

0 1 2 3 Miles

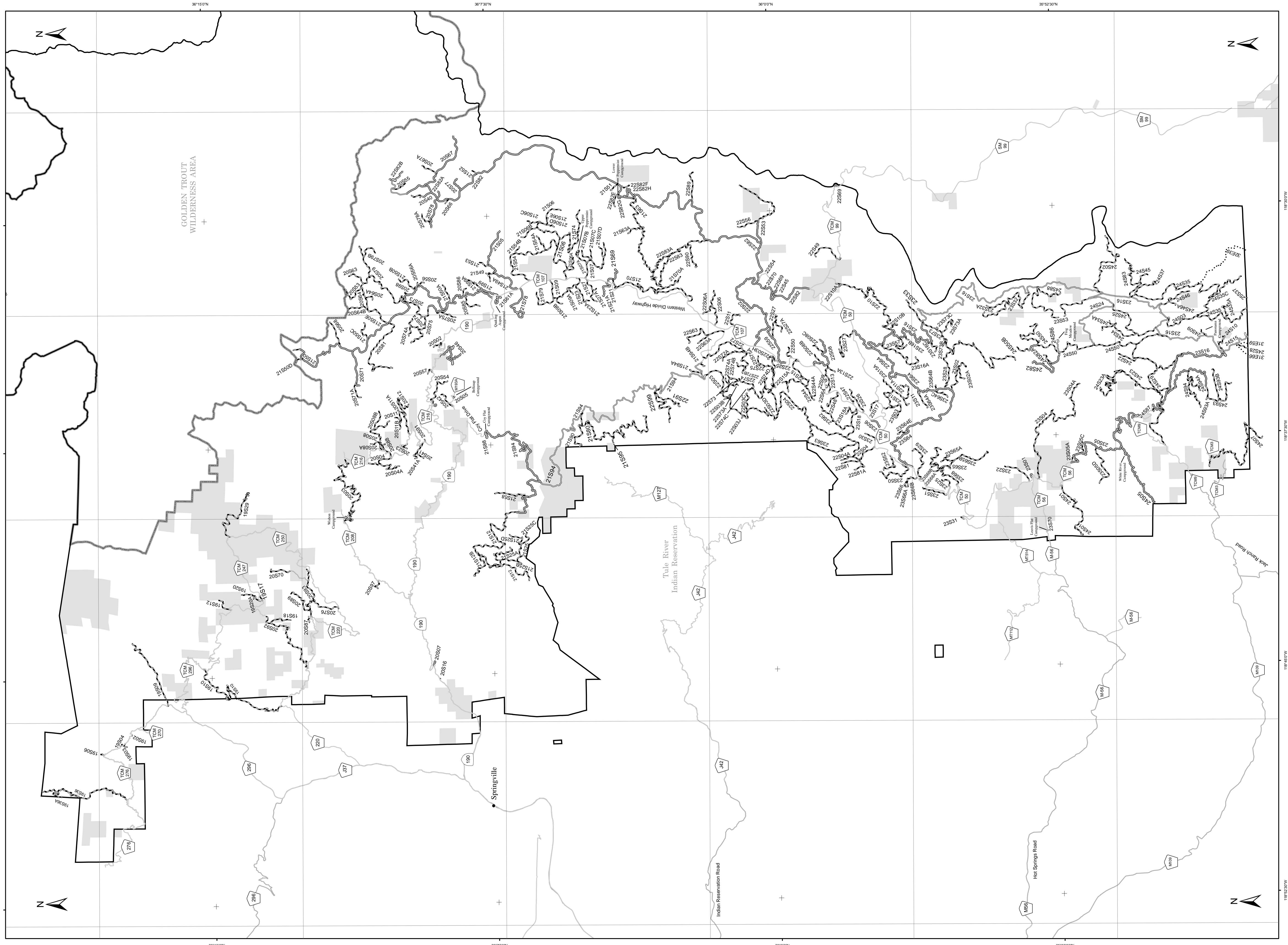
EXPLANATION OF LEGEND ITEMS

Roads Open to Highway Legal Vehicle Only:
 These roads are open only to motor vehicles licensed under State law for general operation on all public roads within the State.

Roads Open to All Vehicles:
 These roads are open to all motor vehicles, including smaller off highway vehicles that may not be licensed for highway use (but not to oversize or overweight vehicles under State traffic law).

Trails Open to All Vehicles:
 These trails are open to all motor vehicles, including both highway legal and non highway legal vehicles.

Trails Open to Motorcycles Only:
 These trails are open only to motorcycles. Sidecars are not permitted.



Motor Vehicle Use Map

Sequoia National Forest
 Giant Sequoia National Monument
 Western Divide Ranger District
 (Hume Lake RD on Other Side)

California 2008
 Forest Service
 United States Department of Agriculture

INFORMATION SOURCES

Western Divide Ranger District
 32588 Highway 190
 Springville, CA 93265
 559-539-2607
 FAX 559-539-2067
 Monday through Friday, 8:00am - 4:30 pm

The U.S. Department of Agriculture (USDA) prohibits discrimination in all its programs and activities on the basis of race, color, national origin, age, disability, and where applicable, sex, marital status, familial status, parental status, religion, sexual orientation, genetic information, political beliefs, reprisal, or because all or part of an individual's income is derived from any public assistance program. (Not all prohibited bases apply to all programs.) Persons with disabilities who require alternative means for communication of program information (Braille, large print, audiotape, etc.) should contact USDA's TARGET Center at (202) 720-2600 (voice and TDD). To file a complaint of discrimination, write to USDA, Director, Office of Civil Rights, 1400 Independence Avenue, S.W., Washington, D.C. 20250-9410, or call (800) 735-3272 (voice) or (202) 720-4382 (TDD). USDA is an equal opportunity provider and employer.

North American Datum of 1983 (NAD 83)
 California Teale Albers