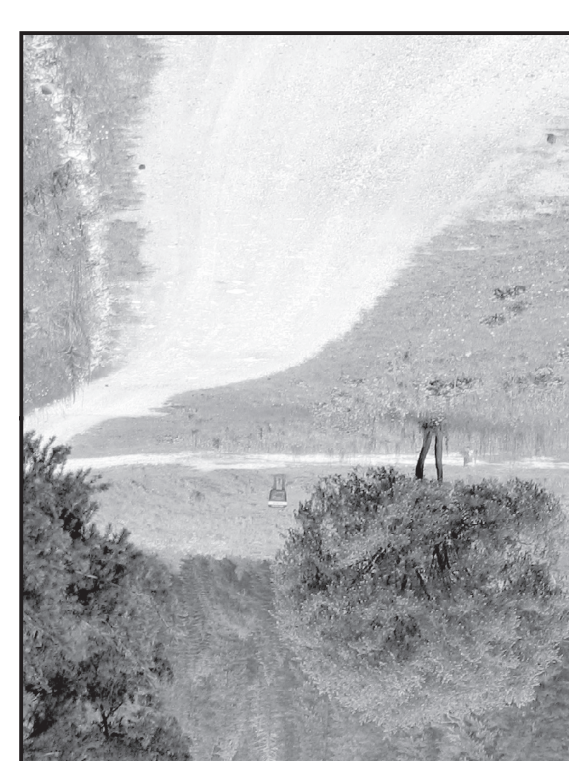


United States Department of Agriculture  
Forest Service  
February 22, 2018  
New Mexico

America's Great Outdoors



Lincoln National Forest

Ranger Districts

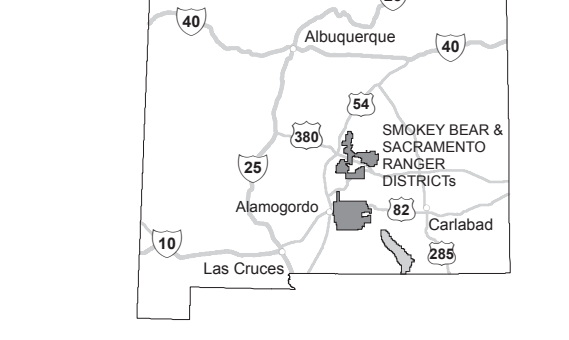
Smoky Bear

Sacramento &

Motor Vehicle Use

Map

VICINITY MAP



INFORMATION SOURCES

Lincoln National Forest  
Supervisor's Office  
3463 Las Palomas Rd.  
Alamogordo, NM 88310  
www.fs.fed.us/lincoln  
(575) 434-7200

Smoky Bear Ranger District  
901 Mechum Dr.  
Ruidoso, NM 88345  
(575) 257-4095

Sacramento Ranger District  
4 Lost Lodge Rd.  
Cloudcroft, NM 88317  
(575) 882-2551

Guadalupe Ranger District  
5203 Buena Vista Drive  
Carlsbad, NM 88220  
(575) 885-4181



Travel and recreate with minimum impact.

Respect the environment and the rights of others.

Educate yourself, plan and prepare before you go.

Allow for future use of the outdoors by leaving it better than you found it.

Discover the rewards of responsible recreation.

For more information on Tread Lightly!, go to [www.treadlightly.org](http://www.treadlightly.org) or call 1-800-966-9900.

In accordance with Federal civil rights law and U.S. Department of Agriculture (USDA) civil rights regulations and policies, the USDA, its Agencies, offices, and employees, and institutions participating in or administering USDA programs are prohibited from discriminating based on race, color, national origin, religion, sex, gender identity (including gender expression), sexual orientation, disability, age, marital status, family/parental status, income derived from a public assistance program, political beliefs, or reprisal or retaliation for prior civil rights activity, in any program or activity conducted or funded by USDA (not all bases apply to all programs). Remedies and complaint filing deadlines vary by program or incident.

Persons with disabilities who require alternative means of communication for program information (e.g., Braille, large print, audiotape, American Sign Language, etc.) should contact the responsible Agency or USDA's TARGET Center at (202) 725-2000 (voice and TTY) or contact USDA through the Federal Relay Service at (800) 877-8339. Additionally, program information may be made available in languages other than English.

To file a program discrimination complaint, complete the USDA Program Discrimination Complaint Form, AD-3027, found online at <http://www.usda.gov/complaint>, filing, use text, and at any USDA office or write a letter addressed to USDA and provide in the letter all of the information requested in the form. To request a copy of the complaint form, call (866) 632-9992. Submit your completed form or letter to USDA by (1) mail: U.S. Department of Agriculture, Office of the Assistant Secretary for Civil Rights, 1400 Independence Avenue, SW, Washington, D.C. 20250-9410; (2) fax: (202) 690-7442; or (3) email: [program.intake@usda.gov](mailto:program.intake@usda.gov).

USDA is an equal opportunity provider, employer, and lender.

## PURPOSE AND CONTENTS OF THIS MAP

The designations shown on this motor vehicle use map (MVUM) were made by the responsible official pursuant to 36 CFR 212.51, are effective as of the date on the front cover of the MVUM and will remain in effect until superseded by next year's MVUM.

*Tim G. Moody*  
Forest Supervisor, Lincoln National Forest

It is the responsibility of the user to acquire the current MVUM. This MVUM shows the National Forest System roads, National Forest System trails, and the areas on National Forest System lands in the Lincoln National Forest that are designated for motor vehicle use pursuant to 36 CFR 212.51. This MVUM also identifies the vehicle classes allowed on each route and in each area, and any seasonal restrictions that apply on those routes and in those areas.

Designation of a road, trail, or area for motor vehicle use by a particular class of vehicle under 36 CFR 212.51 should not be interpreted as encouraging or inviting use or implying that the road, trail, or area is possible, actively maintained, or safe for travel. Motor vehicle designations include parking along designated routes and of facilities associated with designated routes when it is safe to do so and when not causing damage to National Forest System resources. Seasonal weather conditions and natural events may render designated roads and trails impassable for extended periods. Designated areas may contain dangerous or impossible terrain. Many designated roads and trails may be passable only by high-clearance vehicles or four-wheel drive vehicles. Maintenance of designated roads and trails will depend on available resources, and they may require little maintenance.

This motor vehicle use map identifies those roads, trails, and areas designated for the motor vehicle use under 36 CFR 212.51 for the purpose of enforcing the prohibition at 36 CFR 261.13. This is a limited purpose. The other public roads are shown for information and navigation purposes only and are not subject to designation under the Forest Service travel management regulation.

These designations apply only to National Forest System roads, National Forest System trails, and areas on National Forest System lands.

## PROHIBITIONS

It is prohibited to possess or operate a motor vehicle on National Forest System lands on the Smoky Bear and Sacramento Ranger Districts, other than in accordance with these designations, (36 CFR 261.13).

Violations of 36 CFR 261.13 are subject to a fine of up to \$5,000 or imprisonment for up to 6 months or both (18 U.S.C. 3571(e)). This prohibition applies regardless of the presence or absence of signs.

This map does not display nonmotorized uses, over-snow uses, or other facilities and attractions on the Smoky Bear and Sacramento Ranger Districts. Obtain forest visitor information from the local national forest office.

Designated roads, trails and areas may also be subject to temporary, emergency closures, and visitors must comply with signs notifying them of such restrictions. A national forest may issue an order to close a road, trail or area on a temporary basis to protect the life, health, or safety of forest visitors or the natural or cultural resources in these areas. Such temporary and/or emergency closures are consistent with the Travel Management Rule (36 CFR 212.52(b), 36 CFR 261 subpart B).

The designation "road or trail open to all motor vehicles" does not supersede State traffic law.

## OPERATOR RESPONSIBILITIES

Operating a motor vehicle on National Forest System roads, National Forest System trails, and in areas on National Forest System lands carries a greater responsibility than operating that vehicle in a city or other developed setting. Not only must the motor vehicle operators know and follow all applicable traffic laws, but they need to show concern for the environment as well as other forest users. The misuse of motor vehicles can lead to the temporary or permanent closure of any designated road, trail, or area. Operators of motor vehicles are subject to State traffic law, including State requirements for licensing, registration, and operation of the vehicle in question.

Motor vehicle use, especially off-highway vehicle use, involves inherent risks that may cause property damage, serious injury, and possibly death to participants. Riders should drive cautiously and anticipate rough surfaces and features, such as snow, mud, vegetation, and water crossings common to remote driving conditions. Participants voluntarily assume full responsibility for these dangers, risks, and dangers. Motor vehicle operators should take care at all times to protect themselves and those under their responsibility.

Much of the Smoky Bear and Sacramento Ranger Districts is remote, and medical assistance may not be readily available. Cellular telephones do not work in many areas of the Smoky Bear and Sacramento Ranger Districts. Operators should take adequate food, water, first aid supplies, and other equipment appropriate for the conditions and expected weather.

ALWAYS REMEMBER TO RESPECT PRIVATE LAND. PROTECT YOUR PRIVILEGE. STAY ON DESIGNATED ROADS AND TRAILS AND IN DESIGNATED AREAS.

Road and understand this map is in entirety. If you have questions, please contact the Smoky Bear or Sacramento Ranger Districts for clarification.

Road, trail, and area users must comply with this map, as well as all Federal, State, and local laws, and regulations. Compliance with these rules is the responsibility of the user.

**Legend**

- Roads Open to Highway Legal Vehicles
- Roads Open to All Vehicles
- Trails Open to Vehicles 50' or Less in Width
- Trails Open to Motorcycles Only
- Seasonal Designation (See Table)
- Dispersed Camping (See Dispersed Camping Table)
- Highways, U.S., State
- Other Public Roads
- FS Campground
- Picnic Area
- Motorized Trailhead
- Information Site
- Peaks
- Forest or Unit Boundary
- National Forest System Lands
- Non-National Forest System Lands within the National Forest
- Political Boundary
- Lakes and Rivers

0 0.5 1 2 3 4 Miles

N

## EXPLANATION OF LEGEND ITEMS

Roads Open to Highway Legal Vehicles Only:

These roads are open only to motor vehicles licensed under State law for general operation on all public roads within the state.

Roads Open to All Vehicles:

These roads are open to all motor vehicles, including smaller off-highway vehicles that may not be licensed for highway use (but that do not operate or overweight vehicles under State traffic law).

Trails Open to Vehicles 50 inches or Less in Width:

Trail open only to motor vehicles less than 50 inches in width at the widest point on the vehicle.

Trails Open to Motorcycles Only:

These trails are open only to motorcycles. Sidecars are not permitted.

Seasonal Designation:

This symbol, used in conjunction with one of the other road or trail symbols, indicates that the road or trail is open only during certain portions of the year. Refer to Seasonal and Special Designation Table for further instructions.

Dispersed Camping:

This symbol is used along with a designated road or trail to indicate limited cross-country motor vehicle use within a specific distance of that route, solely for the purpose of dispersed camping. The dots indicate where this activity is permitted. They may be on the left, right, or both sides of the route. Refer to the Dispersed Camping Table for specifics.

Other Public Roads and Trails:

- Highways, U.S., State
- Other Public Roads

These symbols are used to show routes the Forest Service does not have jurisdiction over and has not designated for motorized use. These symbols are part of the reference layers showing connections to towns and cities outside the forest boundary.

Motorized Trail Access:

This symbol indicates a trailhead for access to a motorized route. Not all motorized routes have trailheads and those that do may range from primitive to developed.

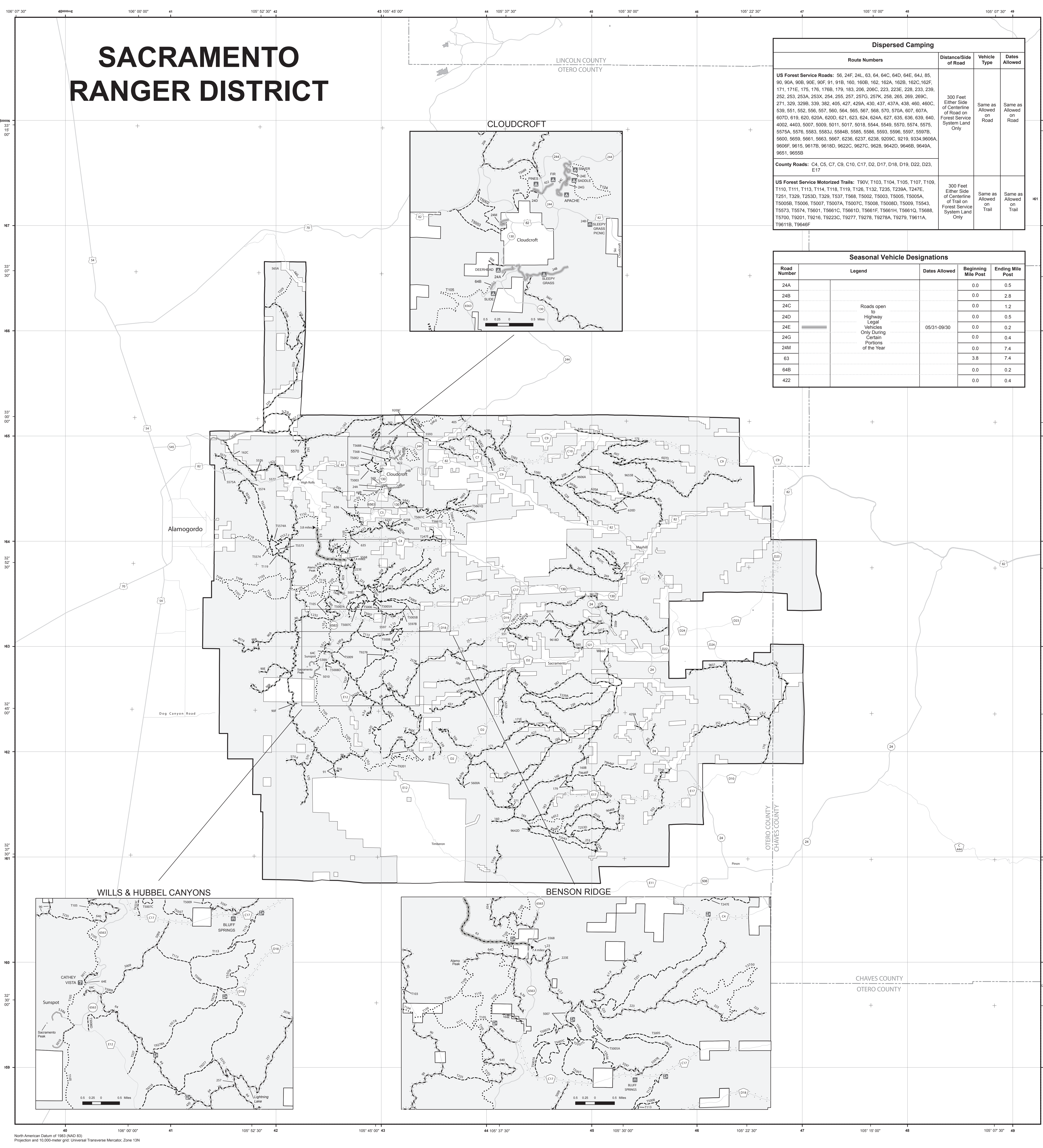
All roads with a seasonal designation are open from May 31 to August 30.

All roads with a seasonal designation are open to highway legal vehicles.

There are no areas open to cross-country motorized use on the Sacramento or Smoky Bear Ranger Districts.

Motor vehicle use off of designated roads or trails for the purpose of dispersed camping is permitted for up to 300 feet from the centerline of road or trail for the same period as permitted for the road or trail.

Motorized vehicle use off designated roads and trails for the purpose of game retrieval is not permitted on the Sacramento or Smoky Bear Ranger Districts.



Dispersed Camping			
Route Numbers	Distance/Size of Road	Vehicle Type	Dates Allowed
US Forest Service Roads: 56, 24F, 24L, 63, 64, 64C, 64D, 64E, 64J, 85, 90, 90A, 90B, 90C, 90F, 91, 91B, 180, 180B, 182, 182A, 182B, 182C, 182D, 171, 171E, 175, 176, 176B, 179, 183, 206, 206C, 223, 223E, 228, 229, 252, 253, 253A, 253X, 254, 255, 257, 257D, 257K, 258, 265, 269, 269C, 271, 329, 329B, 339, 382, 405, 427, 429A, 430, 437, 437A, 438, 490, 490C, 539, 591, 592, 596, 597, 599, 599A, 599B, 599C, 599D, 599E, 607, 607A, 607D, 619, 620, 620A, 620D, 621, 623, 624, 624A, 627, 635, 636, 639, 640, 4002, 4403, 5007, 5009, 5011, 5017, 5018, 5544, 5549, 5570, 5574, 5575, 5576, 5576A, 5576, 5583, 5583A, 5583B, 5583C, 5583D, 5583E, 5583F, 5583G, 5583H, 5583I, 5583J, 5583K, 5583L, 5583M, 5583N, 5583O, 5583P, 5583Q, 5583R, 5583S, 5583T, 5583U, 5583V, 5583W, 5583X, 5583Y, 5583Z, 5583AA, 5583AB, 5583AC, 5583AD, 5583AE, 5583AF, 5583AG, 5583AH, 5583AI, 5583AJ, 5583AK, 5583AL, 5583AM, 5583AN, 5583AO, 5583AP, 5583AQ, 5583AR, 5583AS, 5583AT, 5583AU, 5583AV, 5583AW, 5583AX, 5583AY, 5583AZ, 5583BA, 5583BB, 5583BC, 5583BD, 5583BE, 5583BF, 5583BG, 5583BH, 5583BI, 5583BJ, 5583BK, 5583BL, 5583BM, 5583BN, 5583BO, 5583BP, 5583BQ, 5583BR, 5583BS, 5583BT, 5583BU, 5583BV, 5583BW, 5583BX, 5583BY, 5583BZ, 5583CA, 5583CB, 5583CC, 5583CD, 5583CE, 5583CF, 5583CG, 5583CH, 5583CI, 5583CJ, 5583CK, 5583CL, 5583CM, 5583CN, 5583CO, 5583CP, 5583CQ, 5583CR, 5583CS, 5583CT, 5583CU, 5583CV, 5583CW, 5583CX, 5583CY, 5583CZ, 5583DA, 5583DB, 5583DC, 5583DD, 5583DE, 5583DF, 5583DG, 5583DH, 5583DI, 5583DJ, 5583DK, 5583DL, 5583DM, 5583DN, 5583DO, 5583DP, 5583DQ, 5583DR, 5583DS, 5583DT, 5583DU, 5583DV, 5583DW, 5583DX, 5583DY, 5583DZ, 5583EA, 5583EB, 5583EC, 5583ED, 5583EE, 5583EF, 5583EG, 5583EH, 5583EI, 5583EJ, 5583EK, 5583EL, 5583EM, 5583EN, 5583EO, 5583EP, 5583EQ, 5583ER, 5583ES, 5583ET, 5583EU, 5583EV, 5583EW, 5583EX, 5583EY, 5583EZ, 5583FA, 5583FB, 5583FC, 5583FD, 5583FE, 5583FF, 5583FG, 5583FH, 5583FI, 5583FJ, 5583FK, 5583FL, 5583FM, 5583FN, 5583FO, 5583FP, 5583FQ, 5583FR, 5583FS, 5583FT, 5583FU, 5583FV, 5583FW, 5583FX, 5583FY, 5583FZ, 5583GA, 5583GB, 5583GC, 5583GD, 5583GE, 5583GF, 5583GG, 5583GH, 5583GI, 5583GJ, 5583GK, 5583GL, 5583GM, 5583GN, 5583GO, 5583GP, 5583GQ, 5583GR, 5583GS, 5583GT, 5583GU, 5583GV, 5583GW, 5583GX, 5583GY, 5583GZ, 5583HA, 5583HB, 5583HC, 5583HD, 5583HE, 5583HF, 5583HG, 5583HH, 5583HI, 5583HJ, 5583HK, 5583HL, 5583HM, 5583HN, 5583HO, 5583HP, 5583HQ, 5583HR, 5583HS, 5583HT, 5583HU, 5583HV, 5583HW, 5583HX, 5583HY, 5583HZ, 5583IA, 5583IB, 5583IC, 5583ID, 5583IE, 5583IF, 5583IG, 5583IH, 5583II, 5583IJ, 5583IK, 5583IL, 5583IM, 5583IN, 5583IO, 5583IP, 5583IQ, 5583IR, 5583IS, 5583IT, 5583IU, 5583IV, 5583IW, 5583IX, 5583IY, 5583IZ, 5583JA, 5583JB, 5583JC, 5583JD, 5583JE, 5583JF, 5583JG, 5583JH, 5583JI, 5583JJ, 5583JK, 5583JL, 5583JM, 5583JN, 5583JO, 5583JP, 5583JQ, 5583JR, 5583JS, 5583JT, 5583JU, 5583JV, 5583JW, 5583JX, 5583JY, 5583JZ, 5583KA, 5583KB, 5583KC, 5583KD, 5583KE, 5583KF, 5583KG, 5583KH, 5583KI, 5583KJ, 5583KK, 5583KL, 5583KM, 5583KN, 5583KO, 5583KP, 5583KQ, 5583KR, 5583KS, 5583KT, 5583KU, 5583KV, 5583KW, 5583KX, 5583KY, 5583KZ, 5583LA, 5583LB, 5583LC, 5583LD, 5583LE, 5583LF, 5583LG, 5583LH, 5583LI, 5583LJ, 5583LK, 5583LM, 5583LN, 5583LO, 5583LP, 5583LQ, 5583LR, 5583LS, 5583LT, 5583LU, 5583LV, 5583LW, 5583LX, 5583LY, 5583LZ, 5583MA, 5583MB, 5583MC, 5583MD, 5583ME, 5583MF, 5583MG, 5583MH, 5583MI, 5583MJ, 5583MK, 5583ML, 5583MM, 5583MN, 5583MO, 5583MP, 5583MQ, 5583MR, 5583MS, 5583MT, 5583MU, 5583MV, 5583MW, 5583MX, 5583MY, 5583MZ, 5583NA, 5583NB, 5583NC, 5583ND, 5583NE, 5583NF, 5583NG, 5583NH, 5583NI, 5583NJ, 5583NK, 5583NL, 5583NM, 5583NN, 5583NO, 5583NP, 5583NQ, 5583NR, 5583NS, 5583NT, 5583NU, 5583NV, 5583NW, 5583NX, 5583NY, 5583NZ, 5583OA, 5583OB, 5583OC, 5583OD, 5583OE, 5583OF, 5583OG, 5583OH, 5583OI, 5583OJ, 5583OK, 5583OL, 5583OM, 5583ON, 5583OO, 5583OP, 5583OQ, 5583OR, 5583OS, 5583OT, 5583OU, 5583OV, 5583OW, 5583OX, 5583OY, 5583OZ, 5583PA, 5583PB, 5583PC, 5583PD, 5583PE, 5583PF, 5583PG, 5583PH, 5583PI, 5583PJ, 5583PK, 5583PL, 5583PM, 5583PN, 5583PO, 5583PP, 5583PQ, 5583PR, 5583PS, 5583PT, 5583PU, 5583PV, 5583PW, 5583PX, 5583PY, 5583PZ, 5583QA, 5583QB, 5583QC, 5583QD, 5583QE, 5583QF, 5583QG, 5583QH, 5583QI, 5583QJ, 5583QK, 5583QL, 5583QM, 5583QN, 5583QO, 5583QP, 5583QQ, 5583QR, 5583QS, 5583QT, 5583QU, 5583QV, 5583QW, 5583QX, 5583QY, 5583QZ, 5583RA, 5583RB, 5583RC, 5583RD, 5583RE, 5583RF, 5583RG, 5583RH, 5583RI, 5583RJ, 5583RK, 5583RL, 5583RM, 5583RN, 5583RO, 5583RP, 5583RQ, 5583RR, 5583RS, 5583RT, 5583RU, 5583RV, 5583RW, 5583RX, 5583RY, 5583RZ, 5583SA, 5583SB, 5583SC, 5583SD, 5583SE, 5583SF, 5583SG, 5583SH, 5583SI, 5583SJ, 5583SK, 5583SL, 5583SM, 5583SN, 5583SO, 5583SP, 5583SQ, 5583SR, 5583SS, 5583ST, 5583SU, 5583SV, 5583SW, 5583SX, 5583SY, 5583SZ, 5583TA, 5583TB, 5583TC, 5583TD, 5583TE, 5583TF, 5583TG, 5583TH, 5583TI, 5583TJ, 5583TK, 5583TL, 5583TM, 5583TN, 5583TO, 5583TP, 5583TQ, 5583TR, 5583TS, 5583TT, 5583TU, 5583TV, 5583TW, 5583TX, 5583TY, 5583TZ, 5583UA, 5583UB, 5583UC, 5583UD, 5583UE, 5583UF, 5583UG, 5583UH, 5583UI, 5583UJ, 5583UK, 5583UL, 5583UM, 5583UN, 5583UO, 5583UP, 5583UQ, 5583UR, 5583US, 5583UT, 5583UU, 5583UV, 5583UW, 5583UX, 5583UY, 5583UZ, 5583VA, 5583VB, 5583VC, 5583VD, 5583VE, 5583VF, 5583VG, 5583VH, 5583VI, 5583VJ, 5583VK, 5583VL, 5583VM, 5583VN, 5583VO, 5583VP, 5583VQ, 5583VR, 5583VS, 5583VT, 5583VU, 5583VV, 5583VW, 5583VX, 5583VY, 5583VZ, 5583WA, 5583WB, 5583WC, 5583WD, 5583WE, 5583WF, 5583WG, 5583WH, 5583WI, 5583WJ, 5583WK, 5583WL, 5583WM, 5583WN, 5583WO, 5583WP, 5583WQ, 5583WR, 5583WS, 5583WT, 5583WU, 5583WV, 5583WW, 5583WX, 5583WY, 5583WZ, 5583XA, 5583XB, 5583XC, 5583XD, 5583XE, 5583XF, 5583XG, 5583XH, 5583XI, 5583XJ, 5583XK, 5583XL, 5583XM, 5583XN, 5583XO, 5583XP, 5583XQ, 5583XR, 5583XS, 5583XT, 5583XU, 5583XV, 5583XW, 5583XX, 5583XY, 5583XZ, 5583YA, 5583YB, 5583YC, 5583YD, 5583YE, 5583YF, 5583YG, 5583YH, 5583YI, 5583YJ, 5583YK, 5583YL, 5583YM, 5583YN, 5583YO, 5583YP, 5583YQ, 5583YR, 5583YS, 5583YT, 5583YU, 5583YV, 5583YW, 5583YX, 5583YY, 5583YZ, 5583ZA, 5583ZB, 5583ZC, 5583ZD, 5583ZE, 5583ZF, 5583ZG, 5583ZH, 5583ZI, 5583ZJ, 5583ZK, 5583ZL, 5583ZM, 5583ZN, 5583ZO, 5583ZP, 5583ZQ, 5583ZR, 5583ZS, 5583ZT, 5583ZU, 5583ZV, 5583ZW, 5583ZX, 5583ZY, 5583ZZ	300 Feet Either Side of Centerline of Road on Forest Service System Land Only	Same as Allowed on Road	Same as Allowed on Road
County Roads: C4, C5, C7, C8, C10, C17, D2, D17, D18, D19, D22, D23, E17			
US Forest Service Motorized Trails: T80V, T103, T104, T105, T107, T109, T110, T111, T113, T114, T118, T119, T128, T132, T235, T239A, T247E, T251, T259, T260, T261, T262, T263, T264, T265, T266, T267, T268, T269, T270, T271, T272, T273, T274, T275, T276, T277, T278, T279, T280, T281, T282, T283, T284, T285, T286, T287, T288, T289, T290, T291, T292, T293, T294, T295, T296, T297, T298, T299, T300, T301, T302, T303, T304, T305, T306, T307, T308, T309, T310, T311, T312, T313, T314, T315, T316, T317, T318, T319, T320, T321, T322, T323, T324, T325, T326, T327, T328, T329, T330, T331, T332, T333, T334, T335, T336, T337, T338, T339, T340, T341, T342, T343, T344, T345, T346, T347, T348, T349, T350, T351, T352, T353, T354, T355, T356, T357, T358, T359, T360, T361, T362, T363, T364, T365, T366, T367, T368, T369, T370, T371, T372, T373, T374, T375, T376, T377, T378, T379, T380, T381, T382, T383, T384, T385, T386, T387, T388, T389, T390, T391, T392, T393, T394, T395, T396, T397, T398, T399, T400, T401, T402, T403, T404, T405, T406, T407, T408, T409, T410, T411, T412, T413, T414, T415, T416, T417, T418, T419, T420, T421, T422, T423, T424, T425, T426, T427, T428, T429, T430, T431, T432, T433, T434, T435, T436, T437, T438, T439, T440, T441, T442, T443, T444, T445, T446, T447, T448, T449, T450, T451, T452, T453, T454, T455, T456, T457, T458, T459, T460, T461, T462, T463, T464, T465, T466, T467, T468, T469, T470, T471, T472, T473, T474, T475, T476, T477, T478, T479, T480, T481, T482, T483, T484, T485, T486, T487, T488, T489, T490, T491, T492, T493, T494, T495, T496, T497, T498, T499, T500, T501, T502,	300 Feet Either Side of Centerline of Road on Forest Service System Land Only	Same as Allowed on Road	Same as Allowed on Road
T0610, T0646F			