

OPERATOR RESPONSIBILITIES

Operating a motor vehicle on National Forest System roads, National Forest System trails, and in areas on National Forest System lands carries a greater responsibility than operating that vehicle in a city or other developed setting. Not only must you know and follow all applicable traffic laws, you need to show concern for the environment as well as other forest users. The misuse of motor vehicles can lead to the temporary or permanent closure of any designated road, trail, or area. As a motor vehicle operator, you are also subject to State traffic law, including State requirements for licensing, registration, and operation of the vehicle in question.

Motor vehicle use, especially off-highway vehicle use, involves inherent risks that may cause property damage, serious injury, and possibly death to participants. Drive cautiously and anticipate rough surfaces and features, such as snow, mud, vegetation, and water crossings common to remote driving conditions. By your participation, you voluntarily assume full responsibility for these damages, risks, and dangers. Take care at all times to protect yourself and those under your responsibility.

Much of the Inyo National Forest is remote. Medical assistance may not be readily available. Cellular telephones do not work in many areas of the Inyo National Forest. Take adequate food, water, first-aid supplies, and other equipment appropriate for the conditions and expected weather.

ALWAYS REMEMBER TO RESPECT PRIVATE LAND! PROTECT YOUR PRIVILEGE. STAY ON DESIGNATED ROADS AND TRAILS AND IN DESIGNATED AREAS.

Read and understand this map in its entirety. If you have questions please contact the Inyo National Forest for clarification.

As a motor vehicle operator on a National Forest System road, trail, or area, you must comply with this map, as well as all Federal, State, and local laws and regulations. Compliance with these rules is your responsibility.

PROHIBITIONS

It is prohibited to possess or operate a motor vehicle on National Forest System lands on the Inyo National Forest other than in accordance with these designations (36 CFR 261.13).

Violators of 36 CFR 261.13 are subject to a fine of up to \$5,000, imprisonment for up to 6 months, or both (18 U.S.C. 3571(e)). This prohibition applies regardless of the presence or absence of signs.

This map does not display nonmotorized uses, over-snow uses, or other facilities and attractions on the Inyo National Forest. Obtain forest visitor information from the local national forest office.

Designated roads, trails, and areas may also be subject to temporary, emergency closures. As a visitor, you must comply with signs notifying you of such restrictions. A national forest may issue an order to close a road, trail, or area on a temporary basis to protect the life, health or safety of forest visitors or the natural or cultural resources in these areas. Such a temporary and/or emergency closures are consistent with the Travel Management Rule (36 CFR 212.52 (b), 36 CFR 261 subpart B).

The designation "Road or trail open to all motor vehicles" does not supersede State traffic law.

EXPLANATION OF LEGEND ITEMS

Roads Open to Highway Legal Vehicles Only:

These roads are open only to motor vehicles licensed under State law for general operation on all public roads within the State.

Roads Open to All Vehicles:

These roads are open to all motor vehicles, including smaller off-highway vehicles that may not be licensed for highway use (but not to oversize or overweight vehicles under State traffic law).

Trails Open to All Vehicles:

These trails are open to all motor vehicles, including both highway legal and nonhighway legal vehicles.

These trails are open only to motor vehicles less than 50 inches in width at the widest point on the vehicle.

Trails Open to Motorcycles Only:

These trails are open only to motorcycles. Sidecars are not permitted.

Seasonal Designation:

This symbol, used in conjunction with one of the other road or trail symbols, indicates that the road or trail is open only during certain portions of the year. Refer to Seasonal and Special Designation Table for further instructions.

Other Public Roads and Trails:

Other Public Roads  
Other Public Trails

These symbols are used to show routes the Forest Service does not have jurisdiction over and has not designated for motorized use. These symbols are part of the reference layers showing connections to towns and cities outside the forest boundary.

Short Route Identifier:

70333

This symbol is used for routes that are too short to show an actual symbol type on the map. The symbol contains the number of the road or trail. Users should refer to the corresponding number in the Short Route Table for designation information.

Areas Open to Cross Country Travel:

These are areas on National Forest System land that allow cross-country travel by motorized vehicles. Specific vehicle classes and seasonal designations may be indicated in the Seasonal and Special Designation Table.

Parking Notes

Motor vehicles may be parked within one vehicle length from the edge of the road surface when it is safe to do so without causing damage to NFS resources or facilities, unless prohibited by state law, a traffic sign, or an order (36 CFR261.54).

Legend

Roads Open to Highway Legal Vehicles  
Roads Open to All Vehicles  
Trails Open to All Vehicles  
Trails Open to Vehicles 50" or Less in Width  
Trails Open to Motorcycles Only  
Seasonal Designation (See Seasonal Designation Table)  
Highways, US, State  
Other Public Roads  
Other Public Trails  
Short Route Identifier (See Short Route Table)

Areas Open to Cross-Country Travel

Forest Service Campground

Picnic Area

Information Site

Peaks

Forest Boundary

National Forest System Lands

Non-National Forest System Lands within the National Forest

Wilderness Areas

State Boundary

Lakes

0 0.5 1 2 Miles

Short Route Table - June Lake Map

Routes Less Than 500 Feet

Roads Open to Highway Legal Vehicles Only, Yearlong

Route Number	Length in Feet	Route Number	Length in Feet
01S21L	258	02S28B	165
01S75A	277	02S30A	393
02S14A	173	02S30C-2	96
02S15A	144	02S39A	356
02S15B	161	02S43	382
02S15C	123	02S43A	239
02S15D	118	02S43B	54
02S15E	117	02S44A	313
02S15F	119	02S94A	154
02S19A	175	02S95	429
02S19B	248		

Trails Open to Vehicles 50" or less in width, Yearlong

Route Number	Length in Feet	Route Number	Length in Feet
27E106B	69	27E210	449

Trails Open to All Vehicles, Yearlong

Route Number	Length in Feet	Route Number	Length in Feet
27E106B	69	27E210	449

PURPOSE AND CONTENTS OF THIS MAP

The designations shown on this motor vehicle use map (MVUM) were made by the responsible official pursuant to 36 CFR 212.51; are effective as of the date on the front cover of this MVUM; and will remain in effect until superseded by next year's MVUM.

Barbara Drake, Inyo National Forest

It is the responsibility of the user to acquire the current MVUM. This map shows the National Forest System roads, National Forest System trails, and the areas on National Forest System lands in the Inyo National Forest that are designated for motor vehicle use pursuant to 36 Code of Federal Regulations (CFR) 212.51. This MVUM also identifies the vehicle classes allowed on each route and in each area; and any seasonal restrictions that apply on those routes and in those areas.

Designation of a road, trail, or area for motor vehicle use by a particular class of vehicle under 36 CFR 212.51 should not be interpreted as encouraging or inviting use or implying that the road, trail, or area is passable, actively maintained, or safe for travel. Motor vehicle designations include parking along designated routes and at facilities associated with designated routes when it is safe to do so and when not causing damage to National Forest System resources. Seasonal weather conditions and natural events may render designated roads and trails impassable for extended periods. Designated areas may contain dangerous or impassable terrain. Many designated roads and trails may be passable only by high-clearance vehicles or four-wheel-drive vehicles. Maintenance of designated roads and trails will depend on available resources, and many may receive little maintenance.

This motor vehicle use map identifies those roads, trails, and areas designated for the motor vehicle use under 36 CFR 212.51 for the purpose of enforcing the prohibition at 36 CFR 261.13. This is a limited purpose. The other public roads are shown for information and navigation purposes only and are not subject to designation under the Forest Service travel management regulation.

These designations apply only to National Forest System roads, National Forest System trails, and areas on National Forest System lands.

The U.S. Department of Agriculture (USDA) prohibits discrimination in all its programs and activities on the basis of race, color, national origin, age, disability, and where applicable, sex, marital status, familial status, parental status, religion, sexual orientation, genetic information, political beliefs, reprisal, or because all or part of an individual's income is derived from any public assistance program. (Not all prohibited bases apply to all programs.) Persons with disabilities who require alternative means for communication of program information (Braille, large print, audiotope, etc.) should contact USDA's TARGET Center at (202) 720-2600 (voice and TDD). To file a complaint of discrimination, write to USDA, Director, Office of Civil Rights, 1400 Independence Avenue, S.W., Washington, D.C. 20250-9410, or call (800) 795-3272 (voice) or (202) 720-6382 (TDD). USDA is an equal opportunity provider and employer.

Short Route Table - June Lake Map

Routes Less Than 500 Feet

Roads Open to All Vehicles, Yearlong

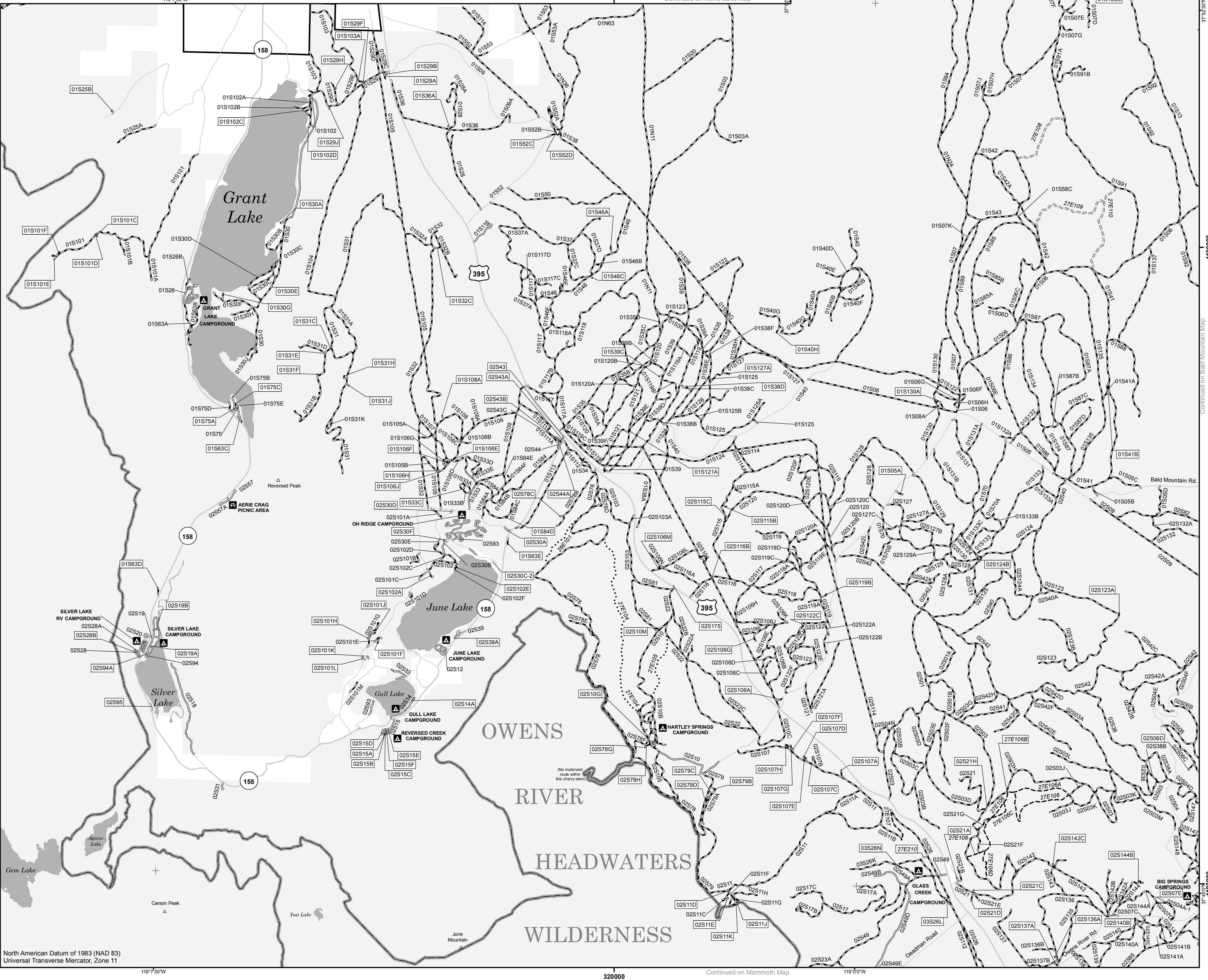
Route Number	Length in Feet	Route Number	Length in Feet
01N38A	383	01S31E	57
01N38B	345	01S31F	165
01N38C	466	01S31H	314
01S05A	440	01S31J	173
01S07A	272	01S32C	343
01S21D	176	01S33C	57
01S25B	211	01S36A	251
01S27D	58	01S38D	69
01S27E	165	01S39C	234
01S27G	42	01S40H	333
01S29A	338	01S41B	216
01S29B	186	01S46A	404
01S29F	68	01S46C	134
01S29H	71	01S52C	486
01S29J	194	01S52D	75
01S30A	244	01S63C	338
01S30E	190	01S63D	445
01S30G	453	01S63E	398
01S31C	94	01S75C	47

Short Route Table - June Lake Map

Routes Less Than 500 Feet

Roads Open to All Vehicles, Yearlong

Route Number	Length in Feet	Route Number	Length in Feet
01S84D	116	01S138E	217
01S101C	135	01S139A	75
01S101D	64	02S06D	499
01S101E	199	02S07E	92
01S101F	269	02S10G	335
01S102C	237	02S10M	282
01S102D	250	02S11D	148
01S103A	144	02S11E	225
01S106E	27	02S11J	129
01S106F	55	02S11K	69
01S106H	161	02S21A	145
01S106J	31	02S21C	130
01S108A	200	02S21D	447
01S121A	30	02S21H	261
01S127A	439	02S30D	133
01S130A	176	02S30F	230
01S138B	432	02S78C	214
01S138C	205	02S78G	188
01S138D	207	02S78H	54



Motor Vehicle Use Map Inyo National Forest

June Lake & Mammoth

CALIFORNIA 2018 Forest Service United States Department of Agriculture

INFORMATION SOURCES

Inyo National Forest Website: [www.fs.usda.gov/inyo](http://www.fs.usda.gov/inyo)

Forest Supervisor's Office Inyo National Forest  
351 Pacu Lane, Suite 200  
Bishop, CA 93514  
(760) 873-2400  
(760) 873-2538 TDD

InterAgency Visitor Center  
(Intersection of Hwy 395 and Hwy 136)  
P.O. Box R  
Lone Pine, CA 93545  
(760) 876-6222  
(760) 876-6223 TDD

Mammoth Ranger Station & Visitor Center  
P.O. Box 148  
Mammoth Lakes, CA 93546  
(760) 924-5800  
(760) 924-5531 TDD

Mono Basin Scenic Area Visitor Center  
P.O. Box 429  
Lee Vining, CA 93541  
(760) 873-2408  
(760) 847-3045 TDD

Mount Whitney Ranger Station  
P.O. Box 8  
Lone Pine, CA 93545  
(760) 876-6200  
(760) 876-6201 TDD

White Mountain Ranger Station  
798 North Main Street  
Bishop, CA 93514  
(760) 873-2500  
(760) 873-2501 TDD

In Case of Emergency  
In case of medical or law enforcement emergencies, dial 911.  
Please be advised that many areas of the forest are not covered by regular cell phone service.

Get Forest Service maps on your phone using the map app! Scan the QR code and it will take you to pdf-maps.com where you can download the free map app for both iOS and Android.

treadlightly! LEAVING A GOOD IMPRESSION

INDEX MAP

June Lake (Front)  
Mammoth (Reverse)

Inyo National Forest

VICINITY MAP

Nevada  
California

Campground Notes

- All roads within Grant Lake Campground are open to Highway Legal Vehicles, Yearlong.
- All roads within Hartley Springs Campgrounds are open to All Vehicles, Yearlong.
- All roads within June Lake Campground are open to Highway Legal Vehicles, Yearlong.
- All roads within On Ridge Campground are open to Highway Legal Vehicles, Yearlong.
- All roads within Silver Lake RV Campground are open to Highway Legal Vehicles, Yearlong.